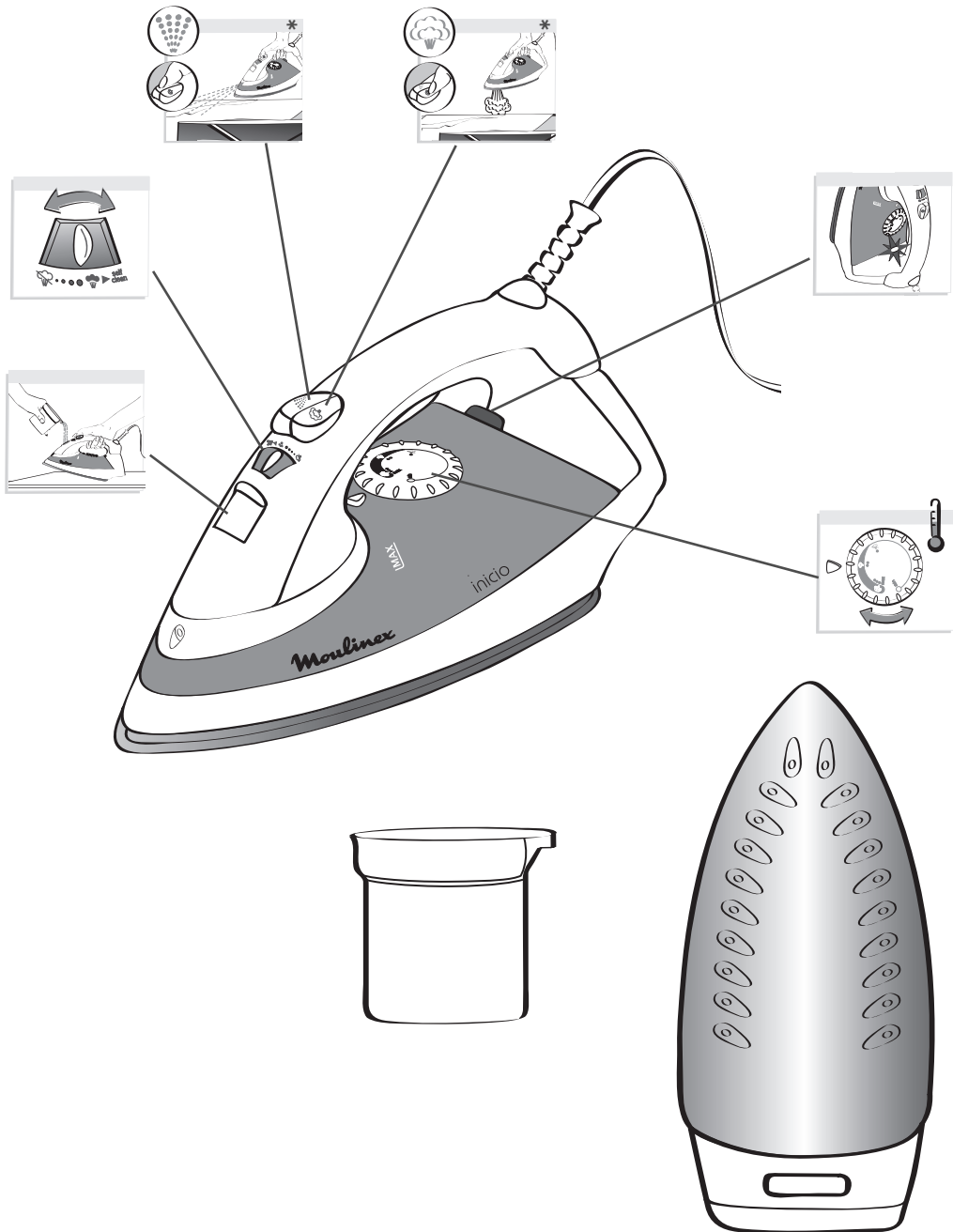


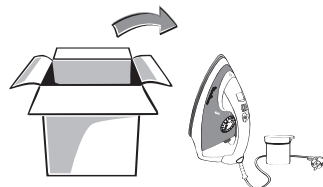
- GB
- F
- E
- P
- I
- D
- FIN
- TR
- RU
- UA
- PL
- CZ
- SK
- SLO
- H
- RO
- SR
- HR
- BG
- TH
- RC
- IR
- AR

www.moulinex.com

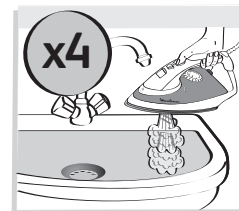
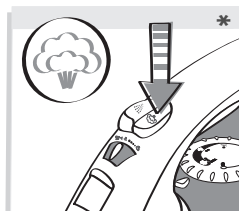
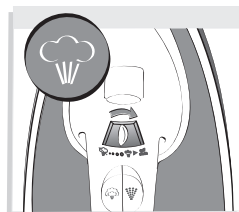
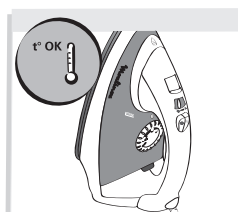
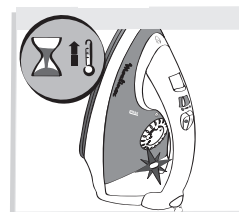
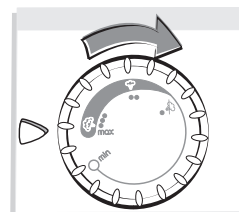
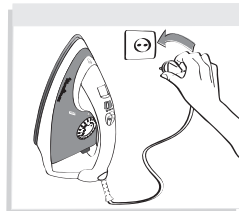
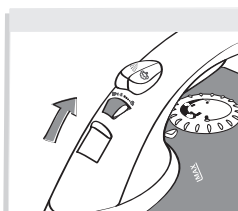
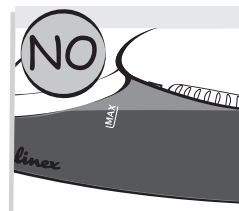
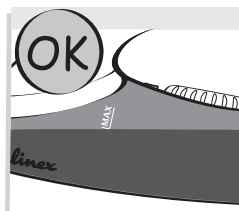
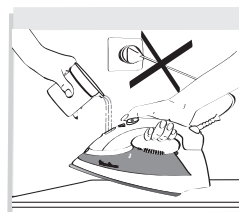
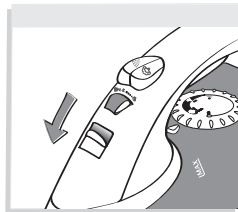
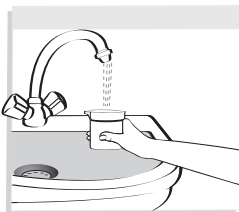
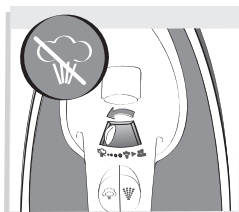


* selon modèle • depending on model • según modelo • consoante o modelo • a seconda del modello • je nach Modell • mallista riippuen • bazı modellerde • в зависимости от модели • один раз на місяць • zależnie od modelu • podle modelu • v závislosti od modelu • odvisno od modela • modelltől függően • în funcție de model • u zavisnosti od modela • ovisno o modelu • в зависимости от модели • 根据型号 • ขึ้นอยู่การรุ่นของเตารีด • بر حسب مدل • حسب الموديل

AVANT LA PREMIERE UTILISATION • BEFORE FIRST USE • ANTES DEL PRIMER USO • PRIMO UTILIZZO • KULLANIM ÖNCESİNDE

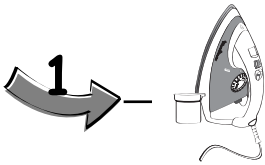


Déballage • Unpacking • Desembalaje • Disimballaggio • Paketin açılması

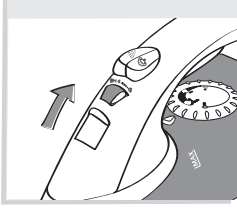
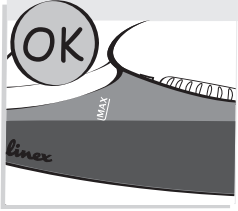
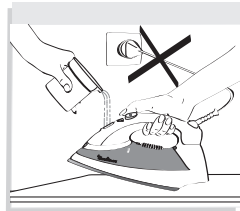
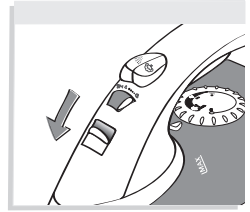
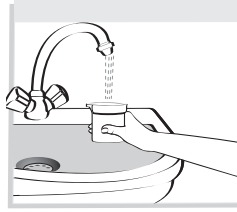
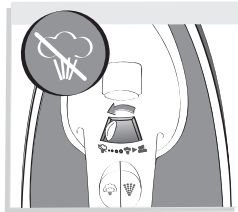
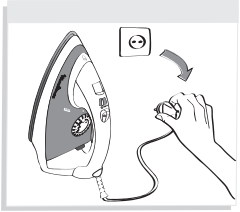


* selon modèle • depending on model • según modelo • consoante o modelo • a seconda del modello • je nach Modell • mallista riippuen • bazı modellerde • в зависимости от модели • один раз на місяць • zależnie od modelu • podle modelu • v závislosti od modelu • odvisno od modela • modeltől függően • în funcție de model • u zavisnosti od modela • ovisno o modelu • в зависимости от модели • 根据型号 • ขึ้นอยู่กับการรุ่นของเตารีด • بر حسب الموديل • حسب الموديل

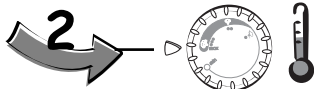
UTILISATION • USE • UTILIZACIÓN • UTILIZO • KULLANIM



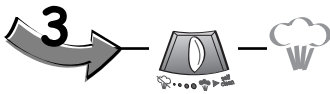
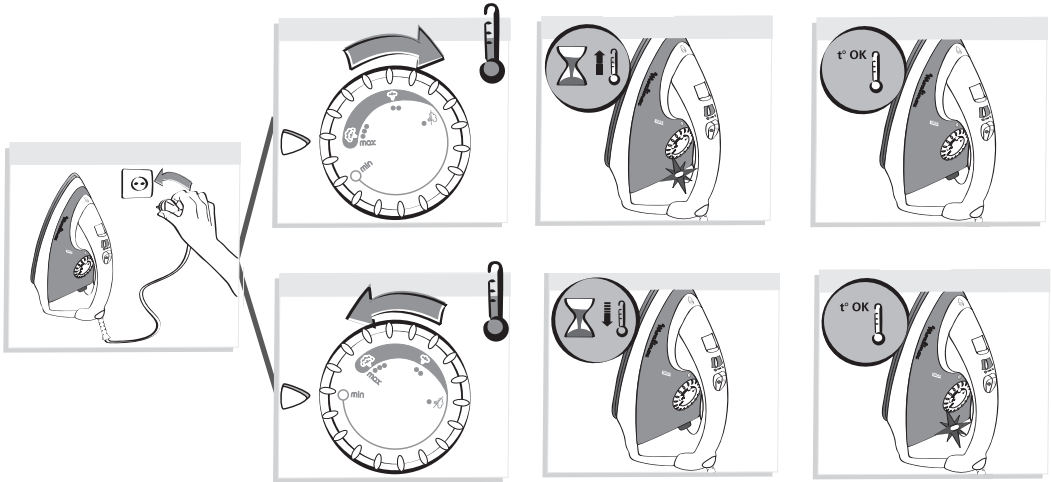
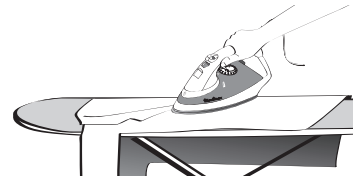
Remplissez le réservoir • Filling the water tank • Llenar el depósito •
Riempimento del serbatoio • Su haznesinin doldurulması



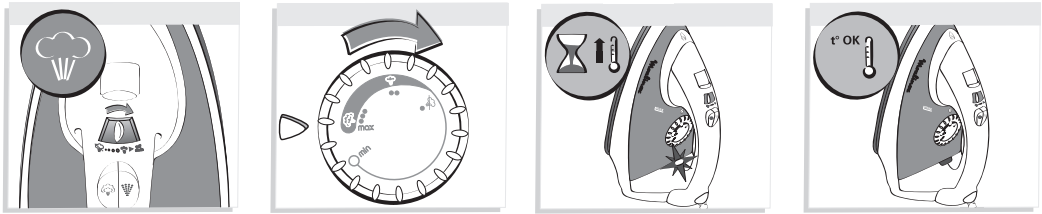
Réglez la température et la vapeur • Setting the temperature and
the steam • Ajustar la temperatura y el vapor • Regolate la
temperatura e il vapore • Isı ve buhar ayarı



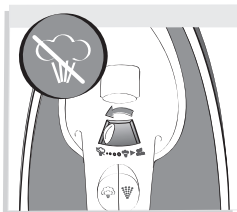
UTILISATION • USE • UTILIZACIÓN • UTILIZZO • KULLANIM



Repassez à la vapeur • Steam ironing • Planchado con vapor •
Stiratura a vapore • Buharlı Ütüleme



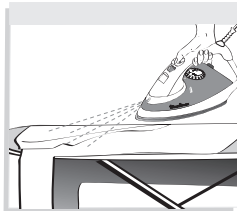
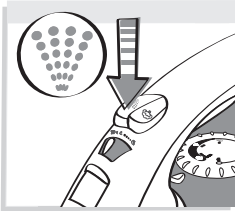
Repassez à sec • Dry ironing • Planchado sin vapor • Stiratura a
secco • Buharsız Ütüleme



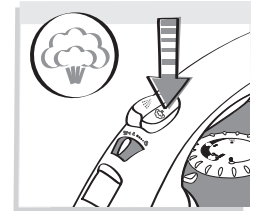
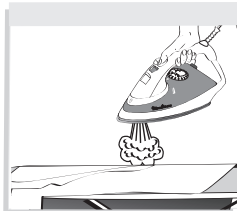
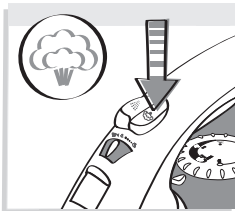
UTILISATION • USE • UTILIZACIÓN • UTILIZZO • KULLANIM



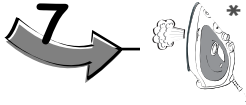
Fonction spray • Spray function • Función Spray • Inumidite i tessuti • Su püskürtme fonksiyonu *



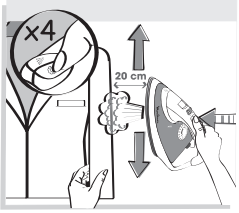
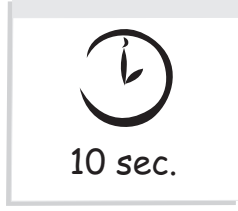
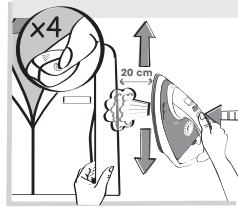
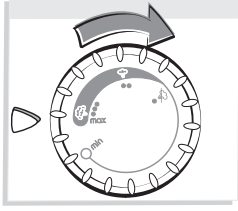
Jet de vapeur • Shot of steam • Golpe de vapor • Supervapore • Ekstra Buharla ütüleme *



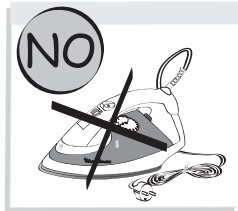
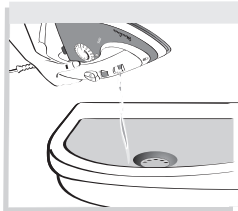
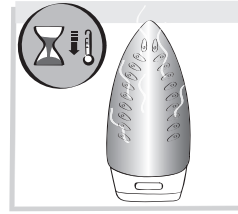
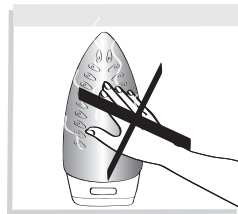
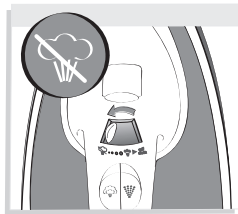
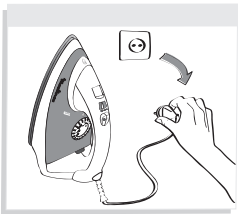
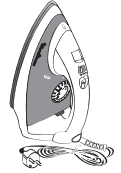
* selon modèle • depending on model • según modelo • consoante o modelo • a seconda del modello • je nach Modell • mallista riippuen • bazı modellerde • в зависимости от модели • один раз на місяць • zależnie od modelu • podle modelu • v závislosti od modelu • odvisno od modela • modelltől függően • în funcție de model • u zavisnosti od modela • ovisno o modelu • в зависимости от модели • 根据型号 • ขึ้นอยู่กับการรุ่นของเตารีด • بر حسب مدل • حسب الموديل



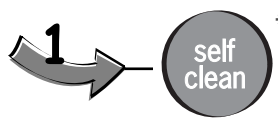
Repassez à la verticale • Vertical shot of steam • Chorro de vapor vertical • Stiratura in verticale • Dikey buharlı ütöleme *



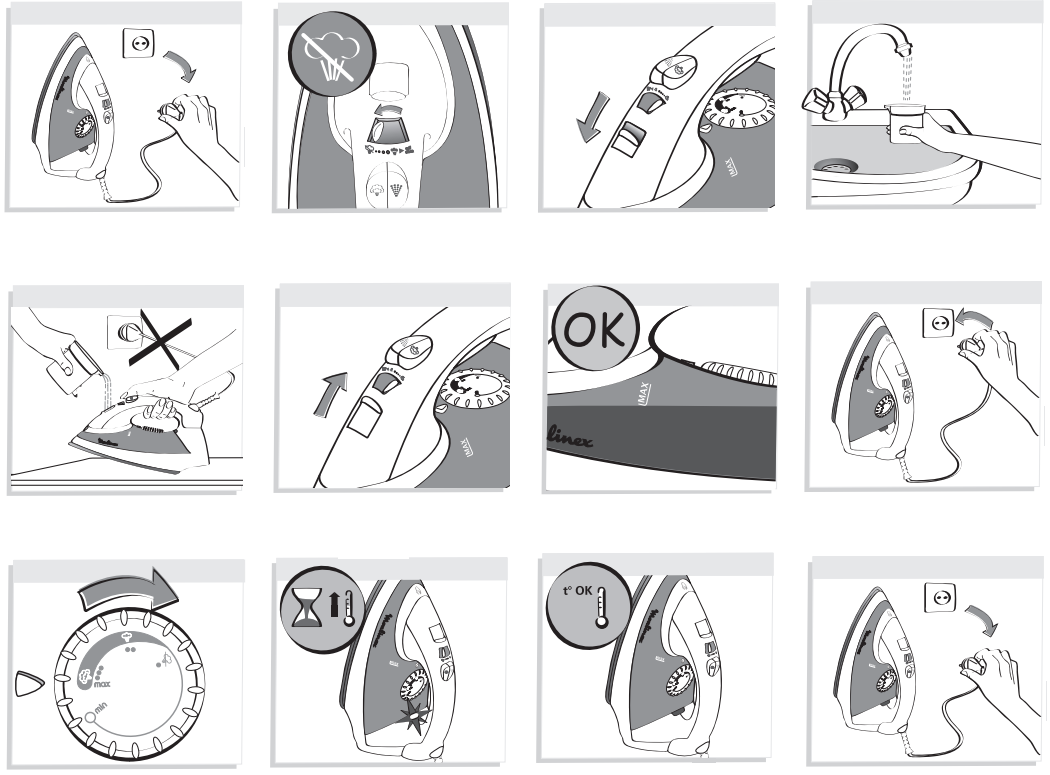
APRES UTILISATION • AFTER USE • DESPUÉS DE PLANCHAR • DOPO LA STIRATURA • ÜTÖLEME SONRASI



ENTRETIEN ET NETTOYAGE • MAINTENANCE AND CLEANING • LIMPIEZA Y CUIDADOS • MANUTENZIONE E PULIZIA • TEMİZLEME VE BAKIM

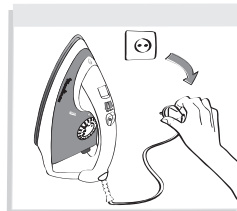
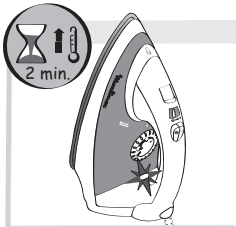
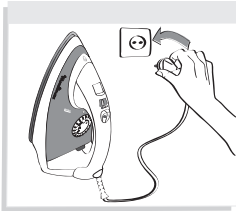
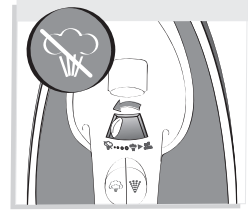
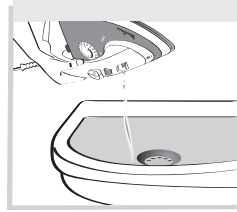
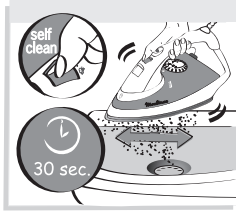
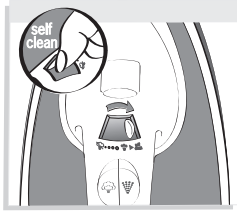


Fonction Self Clean • Self Clean function • Función Self Clean • Self Clean • Otomatik temizleme (Self Clean) *



* selon modèle • depending on model • según modelo • consoante o modelo • a seconda del modello • je nach Modell • mallista riippuen • bazi modellerde • в зависимости от модели • один раз на місяць • zależnie od modelu • podle modelu • v závislosti od modelu • odvisno od modela • modellől függően • în funcție de model • u zavisnosti od modela • ovisno o modelu • в зависимости от модели • 根据型号 • ขั้นตอนการดูแลของเตารีด • بر حسب مدل • حسب الموديل

ENTRETIEN ET NETTOYAGE • MAINTENANCE AND CLEANING • LIMPIEZA Y CUIDADOS •
MANUTENZIONE E PULIZIA • TEMİZLEME VE BAKIM



Nettoyez la semelle • Cleaning the soleplate • Limpieza de la
plancha • Pulire la piastra • Tabanı temizleme

