



Samsung's OMS (Optical Media Solution) Customer Support Website ([www.samsung-ODD.com](http://www.samsung-ODD.com)) offers the latest versions of firmware for ODD products, user instructions and product information.



#### Related links

<http://www.samsung-ODD.com>

<http://www.samsung.com>

#### Select languages

Select your language

#### Firmware Update

Check your firmware version.

#### Warranty Statement

Warranty statement for your product



## Safety precaution

### Safety precautions

#### During installation

#### During operation

#### Others

#### RoHS and WEEE

#### Related links

<http://www.samsung-ODD.com>

<http://www.samsung.com>

#### Select languages

Select your language

### Firmware Update






Check your firmware version.

### Warranty Statement

Warranty statement for your product

## Safety precautions

### Important to read and understand at all times

	<b>Warning</b>	This symbol indicates explanations about extremely dangerous matters. If users ignore this symbol and handle the device the wrong way, this can cause serious injury or death.
	<b>Caution</b>	This symbol indicates explanations about dangerous matters. If users ignore this symbol and handle the device the wrong way, this can cause damage to the product.
	<b>Important</b>	Important to read and understand at all times.
	<b>Caution</b>	Do not disassemble.
	<b>Note</b>	Note

Before use, always make sure that the disc does not have a crack. If the disc has a crack, we recommend to make a copy of the disc and to use the copy. When you continue to use a cracked disc, the size of the crack will increase. This will cause irreparable damage to the disc.

Tc

## Safety precaution

### Safety precautions

#### During installation

#### During operation

#### Others

#### RoHS and WEEE

#### Related links

<http://www.samsung-ODD.com>

<http://www.samsung.com>

#### Select languages

Select your language

### Firmware Update

Check your firmware version.

### Warranty Statement

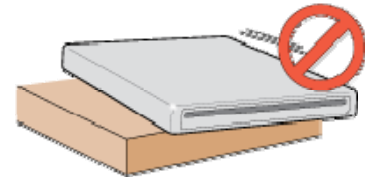
Warranty statement for your product

## During Installation

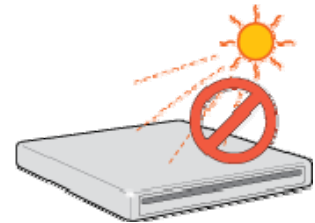
### Installation

Do not install the drive on the unstable position.

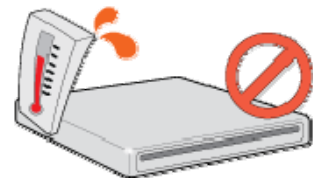
If the drive is dropped, this can cause damage to the drive.



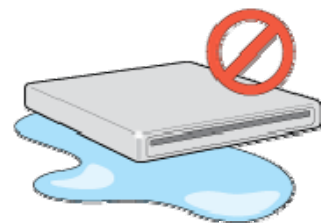
Do not place the drive in direct sunlight.



Avoid very low or high temperatures.



Avoid high humidity.



To

## Safety precaution

### Safety precautions

#### During installation

#### During operation

#### Others

#### RoHS and WEEE

#### Related links

<http://www.samsung-ODD.com>

<http://www.samsung.com>

#### Select languages

Select your language

#### Firmware Update

Check your firmware version.

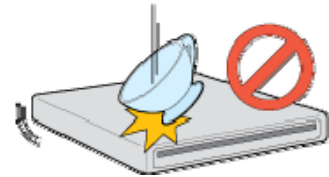
#### Warranty Statement

Warranty statement for your product

## During Operation

### Operation

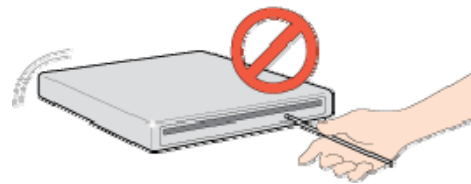
Handle the drive carefully to prevent damage from an external shock.



Do not drop the drive. Protect the drive from severe shocks.  
If you do not protect it, this can cause damage to the drive.



Do not move the drive while in operation. Do not attempt to open the disc tray by force. Make sure that you close all open applications before you open the tray. Always use the Eject button to open and close the tray.



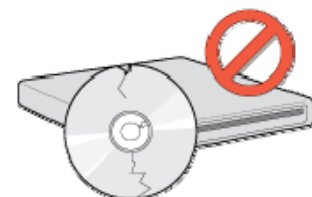
Do not insert a pin into the emergency hole while the drive is in operation.  
Do not insert your hand in the tray while the drive is in operation.  
This can cause damage to the product or human body.

Do not use cracked, distorted or damaged discs.

A disc with a crack can break while you use it, especially when the crack is near the center of the disc.

Before you use the disc, always make sure that it does not have a crack. If the disc has a crack, we recommend to make a copy of the disc and to use the copy. When you continue to use a cracked disc, the size of the crack will increase. This will cause irreparable damage to the disc. Do not use low-quality discs (illegal, scratched, damaged, etc.).

**If you use such discs, Samsung is not responsible for the damage that this can cause.**



Do not put any heavy items on the drive.

All Contents Copyright © 2001 - 2010

**SAMSUNG Electronics Co., Ltd.**

**Optical Disc Drive**




[Home](#)   [Index](#)
[Safety precautions](#)   [Features](#)   [How to install](#)   [How to use](#)   [How to store and clean](#)   [Troubleshooting](#)   [Specifications](#)

## Safety precaution

### Safety precautions

#### During installation

#### During operation

#### Others

#### RoHS and WEEE

#### Related links

<http://www.samsung-ODD.com>

<http://www.samsung.com>

#### Select languages

Select your language

### Firmware Update

Check your firmware version.

### Warranty Statement

Warranty statement for your product

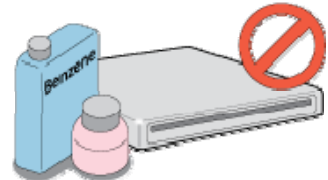
## Others

### Others

Make sure that no food particles and other unwanted matter enter the drive casing.

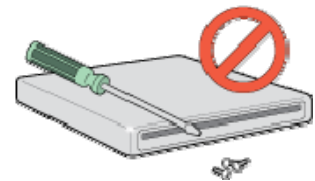


To protect against the risk of fire, do not use liquids such as alcohol and benzene on the drive.



Do not disassemble, repair or modify the device without our approval.

To reduce the risk of damage, electric shock and fire.



Tc

## Safety precaution

[Safety precautions](#)

[During installation](#)

[During operation](#)

[Others](#)

[RoHS and WEEE](#)

[Related links](#)

<http://www.samsung-ODD.com>

<http://www.samsung.com>

[Select languages](#)

Select your language

[Firmware Update](#)

Check your firmware version.

[Warranty Statement](#)

Warranty statement for your product

## RoHS and WEEE

### RoHS

#### Samsung Eco mark

The Samsung Eco shows consumers that Samsung develops eco-friendly products. This mark shows Samsung's continuous efforts to develop eco-friendly products.



#### RoHS(Restriction of the use of certain hazardous substances in electrical and electronic equipment)

The RoHS, the environmental regulation announced by European Union, restricts the use of lead, mercury, cadmium, hexavalent chromium, PBB, and PBDE in products put on the market in the European Union after July 1, 2006.

### WEEE

#### Correct Disposal of This Product (Waste Electrical & Electronic Equipment)

(Applicable in the European Union and other European countries with separate collection systems)



This marking on the product, accessories or literature indicates that the product and its electronic accessories (e.g. charger, headset, USB cable) should not be disposed of with other household waste at the end of their working life. To prevent possible harm to the environment or human health from uncontrolled waste disposal, separate these items from other types of waste and recycle them responsibly to promote the sustainable reuse of material resources.

Household users should contact either the retailer where they purchased this product, or their local government office, for details of where and how they can take this item for environmentally safe recycling.

Business users should contact their supplier and check the terms and conditions of the purchase contract. This product should not be mixed with other commercial waste for disposal.

[Tc](#)



## Features

### Exterior

#### System requirements

#### Features

#### Related links

<http://www.samsung-ODD.com>

<http://www.samsung.com>

#### Select languages

Select your language

#### Firmware Update

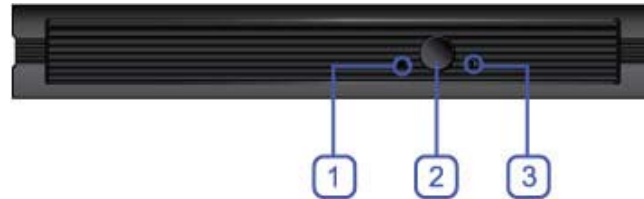
Check your firmware version.

#### Warranty Statement

Warranty statement for your product

## Exterior

### Front



1. LED
2. Eject button
3. Emergency hole

#### Note

Design and specifications are subject to change without prior notice.

### Back



1. USB interface port

## Components

Slim external DVD writer

Quick installation guide

Application software & user manual CD

USB Y-cable

#### Note

The type of accessories varies depending on a product model. Some accessories are subject to change without notice.

Software for Macintosh not included.

Tc





## Features

Exterior

System requirements

Features

### Related links

<http://www.samsung-ODD.com>

<http://www.samsung.com>

### Select languages

Select your language

### Firmware Update

Check your firmware version.

### Warranty Statement

Warranty statement for your product

## System requirements

### System requirements

Item	Description
OS	Microsoft Windows 2000(SP4) / XP(SP1.0 or above) / Vista / 7 MAC OS X (10.4.6 or above)
CPU	Pentium 4 2.0 GHz or above / Atom 1.6 GHz or above
RAM	512 MB or more (Windows 2000 / XP), 1 GB or more (Windows Vista / 7)
Interface	USB 2.0 interface connector

#### Note

The drive will not always be able to achieve its maximum performance. This depends on the PC system environment.

Tc



## Features

### Exterior

### System requirements

### Features

### Related links

<http://www.samsung-ODD.com>

<http://www.samsung.com>

### Select languages

Select your language

### Firmware Update

Check your firmware version.

### Warranty Statement

Warranty statement for your product

## Features

### Versatile multimedia features

	Disc type	Writable	Rewritable	Read
DVD	DVD-STAMP	X	X	O
	DVD+R	O	X	O
	DVD-R	O	X	O
	DVD-RW	X	O	O
	DVD+R DL	O	X	O
	DVD-R DL	O	X	O
	DVD+RW	X	O	O
	DVD-RAM	X	O	O
CD	CD-STAMP	X	X	O
	CD-R	O	X	O
	CD-RW	X	O	O

**Writable:** Write once and read many times.

**Rewritable:** Read and write data once or more times.

To

### Recommended DVD disc types

#### DVD-R Media

TAIYO-YUDEN, TDK, MKM(VERBATIM, MITSUBISHI), MAXELL, FUJIFILM, RITEK, CMC

#### DVD-RW Media

TDK, MKM(VERBATIM, MITSUBISHI), JVC, RITEK, CMC

#### DVD+R Media

RICOH, TAIYO-YUDEN, MKM(VERBATIM, MITSUBISHI), RITEK, CMC, PRODISC, OPTODISC

#### DVD+RW Media

All Contents Copyright © 2001 - 2010

RICOH, MKM(VERBATIM, MITSUBISHI), RITEK, CMC

**SAMSUNG Electronics Co., Ltd.**

**DVD+R DL**

MKM(VERBATIM, MITSUBISHI), RICOH

**Optical Disc Drive**

**DVD-R DL**

MKM(VERBATIM, MITSUBISHI), RICOH

**DVD-RAM**

MAXELL, MKM(VERBATIM, MITSUBISHI)

Tc

## Recommended CD disc types

**CD-R Media**

TAIYO-YUDEN, RICOH, MKM(VERBATIM, MITSUBISHI), MAXELL, FUJIFILM, RITEK (PHTHARO), CMC, PIONEER, PRINCO, TDK

**CD-RW Media**

RICOH, MKM(VERBATIM, MITSUBISHI), RITEK, CMC

**HS CD-RW Media**

RICOH, MKM(VERBATIM, MITSUBISHI), CMC

**US CD-RW Media**

MKM(VERBATIM, MITSUBISHI)

Tc

## Buffer underrun free technology

**What is "buffer underrun prevention technology"?**

A technology to prevent "buffer underrun" errors in which the data transmission speed is not as fast as the data writing speed when you record data.

Tc

## How to install

### How to install the drive

#### How to confirm USB 2.0 and install the USB driver

#### How to confirm the installation of the device driver

#### How to remove the USB cable

#### Firmware update

#### How to remove the utilities

#### Related links

<http://www.samsung-ODD.com>

<http://www.samsung.com>

#### Select languages

Select your language

#### Firmware Update

Check your firmware version.

#### Warranty Statement

Warranty statement for your product

## How to install the drive

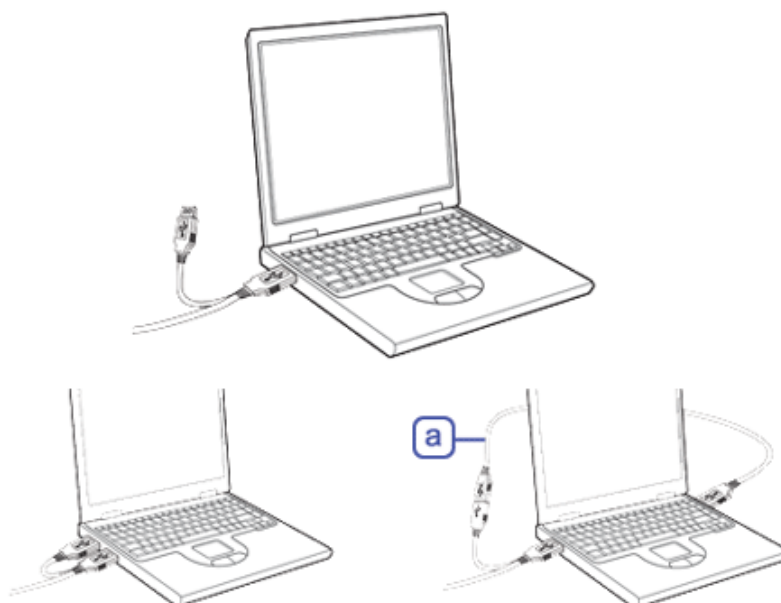
1. Connect the necessary cable, then switch on the drive.

Connect the USB cable to the USB connector on the drive.



2. Connect the other end of the USB cable to your computer.

- a. Extension cable (Option)



3. Normal operation is not guaranteed if you use a USB hub or unspecified cables.
4. PCs with insufficient USB bus power will not work correctly if you use only one USB port.  
To avoid this, connect the drive to 2 USB ports.

#### Caution

If your computer does not have a USB connector, install a USB interface card.

Tc



[Safety precautions](#)
[Features](#)
[How to install](#)
[How to use](#)
[How to store and clean](#)
[Troubleshooting](#)
[Specifications](#)

## How to install

[How to install the drive](#)

[How to confirm USB 2.0 and install the USB driver](#)

[How to confirm the installation of the device driver](#)

[How to remove the USB cable](#)

[Firmware update](#)

[How to remove the utilities](#)

### Related links

<http://www.samsung-ODD.com>

<http://www.samsung.com>

### Select languages

Select your language

### Firmware Update

Check your firmware version.

### Warranty Statement

Warranty statement for your product

## How to confirm USB 2.0 and install the USB driver

### How to confirm USB 2.0

If your PC does not have a USB 2.0 port and you want to use the drive at its highest speed, you must install a USB 2.0 adapter card. The drive can also operate with USB 1.1, but at a lower speed. You can check the type of USB 2.0 adapter card for your PC as follows.

### How to install the USB driver

#### Windows 2000/XP/Vista/7

1. Right-click the **My Computer** icon on your desktop and select **Properties**.
2. Click on the **Hardware** tab. Click the **Device Manager** button.
3. Look at the **Universal Serial Bus Controller** entry. If a yellow exclamation point shows next to this entry, contact the manufacturer of the USB card or PC.

#### Macintosh

1. Click on About This Mac. Click on More Info....
2. Look at the Universal Serial Bus Controller entry. If a yellow exclamation point shows next to this entry, contact the manufacturer of the USB card or PC.

[Safety precautions](#) [Features](#) [How to install](#) [How to use](#) [How to store and clean](#) [Troubleshooting](#) [Specifications](#)

## How to install

[How to install the drive](#)

[How to confirm USB 2.0 and install the USB driver](#)

[How to confirm the installation of the device driver](#)

[How to remove the USB cable](#)

[Firmware update](#)

[How to remove the utilities](#)

### Related links

<http://www.samsung-ODD.com>

<http://www.samsung.com>

### Select languages

Select your language

### Firmware Update

Check your firmware version.

### Warranty Statement

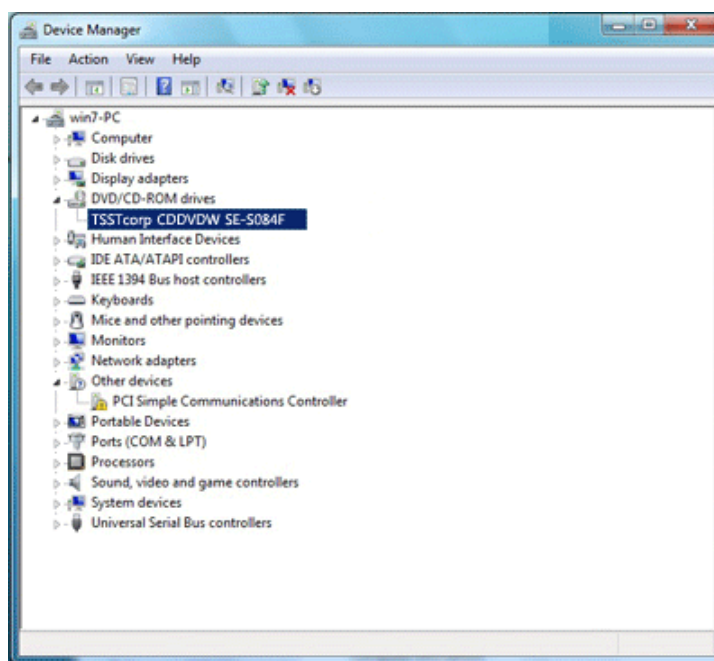
Warranty statement for your product

## How to confirm the installation of the device driver

### How to use Device Manager to confirm

#### Windows 7

1. Click **Start - Control Panel - System and Security - System Device Manager**.
2. Click DVD-W drive in the **Device Manager** window.



#### Note

(1) in the above picture shows if the driver is installed correctly.

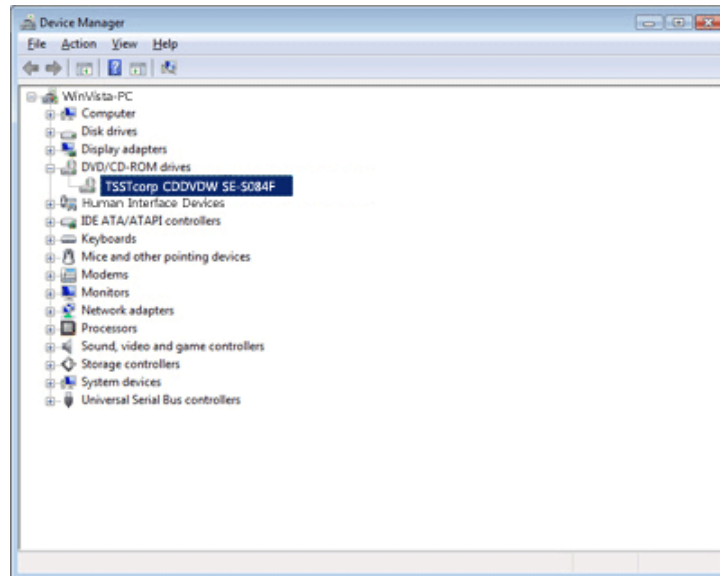
#### Windows Vista

1. Click **Start - Control Panel - System - Device Manager**.
2. Click DVD-W drive in the **Device Manager** window.

All Contents Copyright © 2001 - 2010

SAMSUNG Electronics Co., Ltd.

Optical Disc Drive



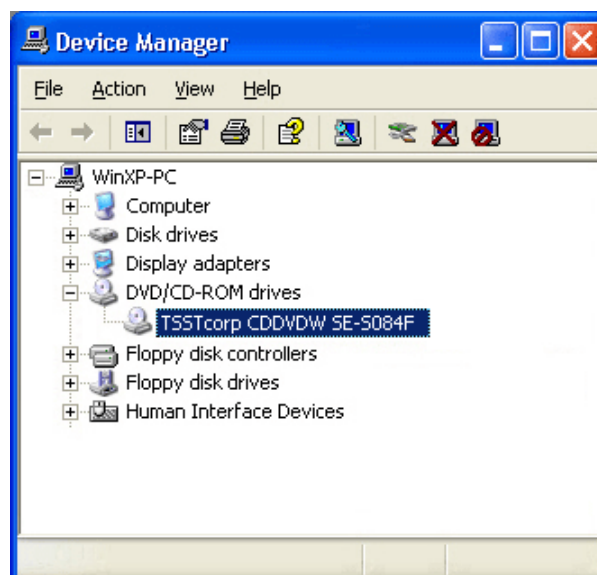
#### Note

(1) in the above picture shows if the driver is installed correctly.

Tc

#### Windows XP

1. Click **Start - Settings - Control Panel - Performance and Maintenance**.
2. Click the **Administrative Tools** icon in the **Performance and Maintenance** window.
3. Click the **Computer Management** icon in the **Administrative Tools** window.
4. Click **Device Manager** icon in the **Administrative Tools** window and then click DVD-W drive.



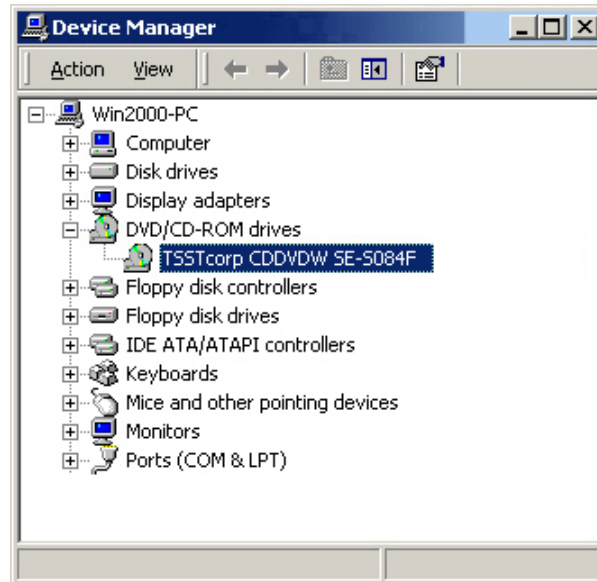
#### Note

(1) in the above picture shows if the driver is installed correctly.

Tc

## Windows 2000

1. Click **Start - Settings - Control Panel - System**.
2. Click on the **Hardware** tab in the **System Properties** window. Click on the **Device Manager** tab.
3. Click DVD-W drive in the **Device Manager** window.



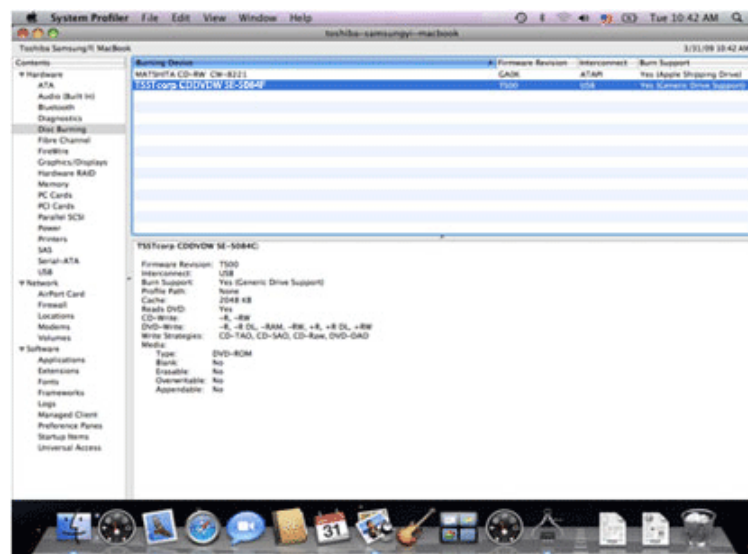
### Note

(1) in the above picture shows if the driver is installed correctly.

Tc

## Macintosh

1. Click Macintosh - More Info....
2. Click the Device Manager button.



### Note



(1) in the above picture shows if the driver is installed correctly.

Tc

## How to install

### How to install the drive

### How to confirm USB 2.0 and install the USB driver

### How to confirm the installation of the device driver

### How to remove the USB cable

### Firmware update

### How to remove the utilities

### Related links

<http://www.samsung-ODD.com>

<http://www.samsung.com>

### Select languages

Select your language

### Firmware Update

Check your firmware version.

### Warranty Statement

Warranty statement for your product

## How to remove the USB cable

### Warning

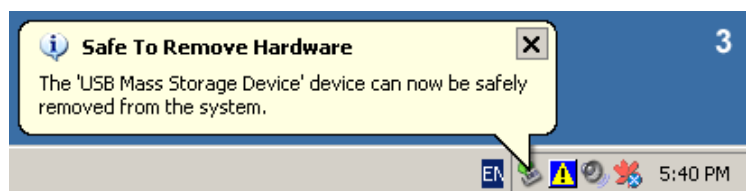
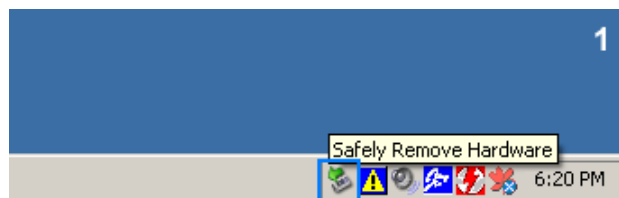
Do not disconnect the USB cable while the drive is in operation or the computer starts.

### For Windows

This drive supports Windows Plug & Play.

To remove the USB cable:

1. Close all active software programs.
2. Click the icon in the lower right part of the screen. See the picture.



3. Disconnect the USB cable.

### For Macintosh

This drive supports Macintosh Plug & Play.

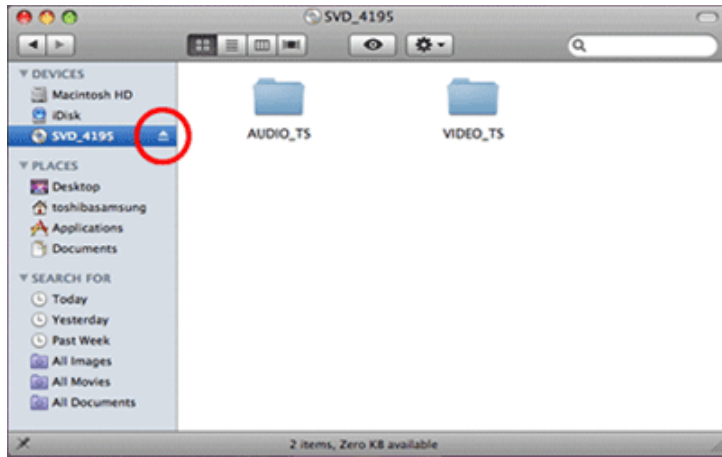
To remove the USB cable:

1. Click the icon in the left menu. See the picture.

All Contents Copyright © 2001 - 2010

**SAMSUNG Electronics Co., Ltd.**

**Optical Disc Drive**



2. Disconnect the USB cable.

Tc



[Safety precautions](#) [Features](#) [How to install](#) [How to use](#) [How to store and clean](#) [Troubleshooting](#) [Specifications](#)

## How to install

### How to install the drive

### How to confirm USB 2.0 and install the USB driver

### How to confirm the installation of the device driver

### How to remove the USB cable

### Firmware update

### How to remove the utilities

### Related links

<http://www.samsung-ODD.com>

<http://www.samsung.com>

### Select languages

Select your language



### Firmware Update

Check your firmware version.

### Warranty Statement

Warranty statement for your product

## Firmware update

1. Go to [www.samsung-ODD.com](http://www.samsung-ODD.com) .
2. Click **Firmware** on the menu bar (in the upper right corner).
3. Click **Firmware Downloads**. Find your drive model and start the download.

[Top](#)


[Home](#)   [Index](#)
[Safety precautions](#)   [Features](#)   [How to install](#)   [How to use](#)   [How to store and clean](#)   [Troubleshooting](#)   [Specifications](#)

## How to install

[How to install the drive](#)

[How to confirm USB 2.0 and install the USB driver](#)

[How to confirm the installation of the device driver](#)

[How to remove the USB cable](#)

[Firmware update](#)

[How to remove the utilities](#)

### Related links

<http://www.samsung-ODD.com>

<http://www.samsung.com>

### Select languages

Select your language

### Firmware Update

Check your firmware version.

### Warranty Statement

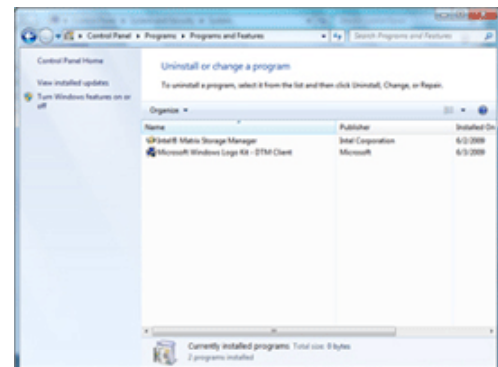
Warranty statement for your product

## How to remove the utilities

Click **Start - Setting - Control Panel - Add/Remove Programs**. The window below shows.

### Windows 7

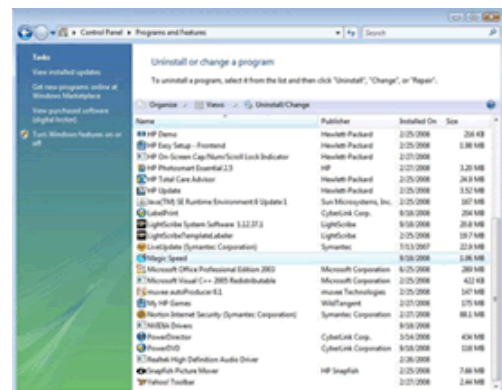
Click the **Add/Remove** button to remove the program.



Tc

### Windows Vista

Click the **Add/Remove** button to remove the program.



Tc

### Windows XP

Click the **Add/Remove** button to remove the program.



All Contents Copyright © 2001 - 2010

Tc

**SAMSUNG Electronics Co., Ltd.**

### Windows 2000

Click the **Add/Remove** button to remove the program.

**Optical Disc Drive**



Tc

## How to use

### How to use the drive

#### How to use DVD±R/RW and other discs

#### When the LED blinks

#### Related links

<http://www.samsung-ODD.com>

<http://www.samsung.com>

#### Select languages

Select your language

### Firmware Update

Check your firmware version.

### Warranty Statement

Warranty statement for your product

## How to use the drive

#### Caution

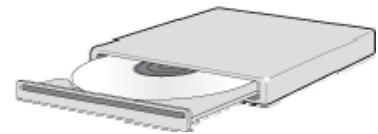
Do not switch off the PC while the LED indicator blinks green. Also do not disconnect the drive.

This can cause damage to the drive.

### How to use a drive that is installed horizontally

You can use **3.15 inch or 4.72 inch (80 mm or 120 mm) discs**.

The drive can only read the disc correctly if the disc is placed inside the tray guiding line.



#### Caution

Do not use the drive vertically.

To



## How to use

### How to use the drive

### How to use DVD±R/RW and other discs

### When the LED blinks

### Related links

<http://www.samsung-ODD.com>

<http://www.samsung.com>

### Select languages

Select your language

### Firmware Update

Check your firmware version.

### Warranty Statement

Warranty statement for your product

## How to use DVD±R/RW and other discs

### Important

The Slim External DVD Writer lets you write DVD±RW discs with Nero Express and enables "packet writing" (high-speed recording) with InCD.

The drive also lets you write DVD±R discs with Nero Express.

### Caution

***It is illegal to make unauthorized copies of DVD or software titles. A person who makes illegal copies can be held responsible for copyright infringement.***

***If you use low-quality discs, this can increase the recording time or make it impossible to use the disc.***

## How to use DVD±R/RW and other discs

You can use the drive to play Audio CD, CD-ROM, CD-R/RW and DVD-ROM discs. If your computer recognizes the [CD-ROM] icon designated to the drive as the 'E:' drive, insert a CD-ROM or a DVD-ROM disc and access the 'E:' drive.

(The assigned drive letter can be different in your specific system environment.)

If you want to use this product to play a commercial DVD video title ('DVD title')

Most DVD titles in the market use the Dolby sound system.

It is necessary to install software that supports Dolby decoding on your PC before you can play a DVD title with this drive.

How to get commercial software that supports Dolby decoding.

Go to the website of Nero: <http://www.nero.com>

(You can also use other compliant software)

## DVD Region Protection Coding (RPC)

### DVD Region Protection Coding (RPC):

The RPC feature is supported on DVD players and is used with DVD-video discs (such as movies). The motion picture industry has divided the world into different regions that correspond to the regional markets into which the motion picture industry releases movies. Movies worldwide have RPC codes, based on the region of the world in which they are being sold. These RPC codes help to control and prevent pirating of new movies into other motion picture regions before their release within those markets.

This drive supports RPC phase II. In the RPC-2 mode, users can change the local code. RPC-2 is selected by default for this drive.

You can change the region code up to five times via an MPEG application.

Please contact your dealer or local SAMSUNG representative if you need to change the local code more than five times.





## How to use

### How to use the drive

### How to use DVD±R/RW and other discs

### When the LED blinks

### Related links

<http://www.samsung-ODD.com>

<http://www.samsung.com>

### Select languages

Select your language

### Firmware Update

Check your firmware version.

### Warranty Statement

Warranty statement for your product

## When the LED blinks

Status	LED
Disc Lead-In	Green: Blinks every 0.3 seconds.
Writing	Green: Blinks every 0.3 seconds.
Reading	Green: Blinks every 0.3 seconds.
Standby	Off
No Disc	Off

#### Note

The indicator light goes off when the drive is not in use (standby) after disc lead-in.

Tc

## How to store and clean

[How to store the disc](#)

[How to clean the disc](#)

### Related links

<http://www.samsung-ODD.com>

<http://www.samsung.com>

### Select languages

Select your language

### Firmware Update

Check your firmware version.

### Warranty Statement

Warranty statement for your product

## How to store the disc

### Important

This part of the manual gives information to prevent damage or data loss.  
Read carefully and use the device correctly.

Do not place it in direct sunlight.

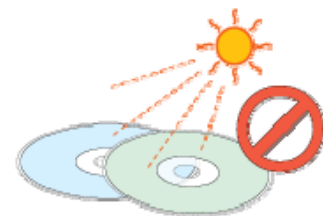
Place it so that it sits on its side on a flat surface.

Do not scratch the disc or put a label on it.

Handle the disc carefully to prevent damage from an external shock.

Do not expose it to large temperature changes.

(Exposure to such environment can cause congealing.)



Tc

## How to store and clean

[How to store the disc](#)

[How to clean the disc](#)

### Related links

<http://www.samsung-ODD.com>

<http://www.samsung.com>

### Select languages

Select your language

### Firmware Update

Check your firmware version.

### Warranty Statement

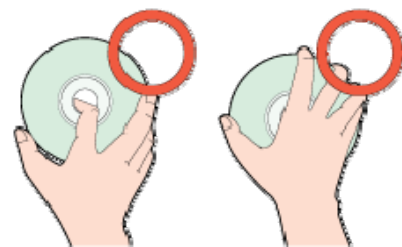
Warranty statement for your product

## How to clean the disc

### Important

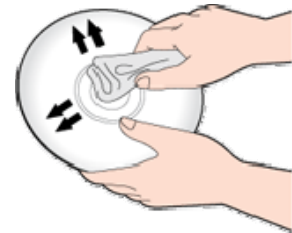
This part of the manual gives information to prevent damage or data loss.  
Read carefully and use the device correctly.

Do not touch the surface of the disc.  
Put your fingers on the edge of the disc to hold it.



Use a soft cotton cloth to clean the disc. Start from the center and move to the edge of the disc.

Use only disc-cleaning liquids. Do not use benzene, paint thinner or other solvents.



### Note

If the disc surface becomes dirty with fingerprints, foreign substances or dust, the disc will not function properly.

Tc



## Troubleshooting

### Troubleshooting

Caution: possible errors

#### Related links

<http://www.samsung-ODD.com>

<http://www.samsung.com>

#### Select languages

Select your language

#### Firmware Update

Check your firmware version.

#### Warranty Statement

Warranty statement for your product

## Troubleshooting

### General problems

Problem	Meaning / Solution
<b>The Eject button is not working correctly.</b>	Make sure that the drive is on.
	If the disc still does not eject with the power on, remove the USB cable and insert a pin into the emergency eject hole to open.
<b>No sound from an audio disc.</b>	Make sure that the sound card is operational.
	Examine the disc and wipe the surface of the disc clean before use.
<b>The computer does not recognize the drive.</b>	Make sure that the USB cable is connected correctly between the computer USB port and the drive.
	Make sure that the two connectors of the USB cable are correctly connected to the USB ports on the computer and the drive.
	This can be a problem with your operating system software. Try to reinstall the operating system.
<b>The system does not read the disc.</b>	Make sure that the system detects the drive.
	Make sure that you use a disc type that is supported by the drive.
	Make sure that the LED indicator becomes green.
	Make sure that you inserted the disc with the label facing up.
	Make sure that you use the correct program to play the disc.
	Make sure that the disc is clean.
	Examine the drive for congealing.
	Make sure that the region code of the drive matches the region code of the disc.

You can confirm the software version on our customer support site.

Address: [www.samsung-ODD.com](http://www.samsung-ODD.com)

See **SUPPORT** > **Download Center** > **User Manual**.

See **INFORMATION** > **Flash Manual** > **Recording Software**.

All Contents Copyright © 2001 - 2010 **SAMSUNG Electronics Co., Ltd. Optical Disc Drive**



## Troubleshooting

### Troubleshooting

#### Caution: possible errors

#### Related links

<http://www.samsung-ODD.com>

<http://www.samsung.com>

#### Select languages

Select your language

#### Firmware Update

Check your firmware version.

#### Warranty Statement

Warranty statement for your product

## Caution: Possible errors

The drive uses laser light to write data onto the surface of the disc. Writing errors can occur if you use a damaged disc. Make sure to prevent the conditions below before you start to write a disc.

#### Note

These settings are recommended for all drives.

1. Do not use multitasking. Disable the screen saver.

A buffer under-run can occur if the system uses multitasking while the drive writes data.

2. Do not let any outside computer access the host PC while the drive writes data.

An error can occur if another user accesses a network printer while the drive writes data.

3. Disable the CD auto-run feature of all drives.

If you insert an auto-run CD into another drive within the same system while the drive writes data, this can cause an error.

4. It is recommended that you use the image file format when you write a large number of small-sized files.

When there are many small files to write, the transfer rate decreases and the Buffer under run protection feature works at a more frequent rate. This causes a lower writing quality.

If you are doing a CD-to-CD copy, it is not necessary to verify if you have available space on your hard disc.

However, in the case of image files, we recommend that you make sure you to have at least two times the amount of space needed for the data on your hard disc. This is because image files are copied to the hard disc before they are copied to the media.

5. Do not use more than one type of writing software.

Before you install a writing program, make sure to first uninstall existing versions of the program or other writing programs. After you uninstall any software, restart the PC. (The Windows operating system can be damaged if you install different language versions)

#### Note

We recommend that you use the data recording software provided by Samsung. If you use other recording software, this can cause an error.

To

The write speed for a disc can be restricted if:

1. **The disc has bad properties, or there are other discs with bad properties under the same ID.**

The drive examines the disc properties to determine the best write conditions for the

All Contents Copyright © 2001 - 2010

**SAMSUNG Electronics Co., Ltd.**

### Optical Disc Drive

type of disc. Because the two types of disc have the same property data but different properties, it is often not possible to use the same settings. It is necessary to decrease the writing speed to make the writing more stable.

If discs from two different disc makers have the same writing speed according to the labels, but actually have different writing speeds, it is necessary to reduce the writing speed.

#### 2. Samsung standards to decrease writing speed

**Standard 1:** If there are high-speed discs in the market that have very bad property data, the writing speed is decreased. This also happens if there are low-speed discs with the same ID.

**Standard 2:** Discs for which the speed was reduced, will be examined again. If low-speed discs are no longer available in the market under the same ID as a high-speed disc, the decreased writing speed will no longer apply to the high-speed disc.

#### Note

It is possible that you do not get good writing quality with discs from manufacturers that are not registered in the drive's firmware.

We thus recommend that you only use discs from recommended companies.

Always make sure that the writing was successful before you put the disc in storage. This is very important when you want to store important data.

(Samsung is not responsible for any loss caused by a backup failure)

#### Note

We update the list of supported media on a regular basis and make them available in our firmware upgrades.

To



## Specifications

## Product specifications

## Product specifications

## Related links

<http://www.samsung-ODD.com>
<http://www.samsung.com>

## Select languages

 Select your language 

## Firmware Update

Check your firmware version.

## Warranty Statement

Warranty statement for your product

## Specifications

Category		SE-S084F	
		Slim external DVD writer	
Disc	Usable discs	<b>DVD:</b> DVD-R, DVD-RW, DVD+R, DVD+RW, DVD-ROM, DVD-Video, DVD+R (DL), DVD-R (DL), DVD-RAM <b>CD:</b> CD-ROM, CD-R, CD-RW, CD-DA, CD+E (G), CD-MIDI, CD-TEXT, CD-ROM XA, Mixed Mode CD, CD-I, CD-I Bridge (Photo-CD, Video-CD), Multisession CD (Photo-CD, CD-EXTRA, Portfolio)	
	Disc diameter	3.15 inch or 4.72 inch (80 mm or 120 mm)	
Interface support	Interface port	USB 2.0	
Access time (random)	CD-ROM	190 ms	
	DVD-ROM	190 ms	
Data transfer speed (max)	<b>Media type</b>	<b>Read</b>	<b>Write</b>
	DVD-R	CAV 8X	PCAV 8X
	DVD-RW	CAV 8X	ZCLV 6X
	DVD-R DL	CAV 8X	ZCLV 6X
	DVD+R	CAV 8X	PCAV 8X
	DVD+RW	CAV 8X	ZCLV 8X
	DVD+R DL	CAV 8X	ZCLV 6X
	DVD-ROM	CAV 8X	-
	DVD-RAM	PCAV 5X	PCAV 5X
	CD-R	CAV 24X	PCAV 24X
	CD-RW	CAV 24X	ZCLV 24X



All Contents Copyright © 2001 - 2010

SAMSUNG Electronics Co., Ltd.

Optical Disc Drive

Category		SE-S084F	
		Slim external DVD writer	
CD-ROM		CAV 24X	-
Buffer memory		1.5 MB	
Drive installation		Horizontal	
Operating environment	Temperature	41 °F ~ 104 °F (5 °C ~ 40 °C)	
	Humidity	10% ~ 80% (RH)	
Dimensions (width x height x length)		141mm X 19.5mm X 142mm	
Weight		325 g	

**Note**

Cannot playback or record on both sides of a dual layer disc simultaneously.

The read/write capacity of the supported discs depends on the condition of the disc and the recording format of the drive. Therefore, the read/write quality may not be perfect.

Firmly install the product into the PC before use.

Specifications are subject to change without notice.

Tc

**FCC information to the user**

This equipment has been tested and found to comply with the limits for a Class B digital device, pursuant to Part 15 of the FCC Rules. These limits are designed to provide reasonable protection against harmful interference in a residential installation. This equipment generates, uses and can radiate radio frequency energy and, if not installed and used in accordance with the instructions, may cause harmful interference to radio communications.

However, there is no guarantee that interference will not occur in a particular installation. If this equipment does cause harmful interference to radio or television reception, which can be determined by turning the equipment off and on, the user is encouraged to try to correct the interference by one or more of the following measures:

Reorient or relocate the receiving antenna.

Increase the separation between the equipment and receiver.

Connect the equipment into an outlet on a circuit different from that to which the receiver is connected.

Consult the dealer or an experienced radio/TV technician for help.

**Caution**

Change or modifications not expressly approved by the manufacturer responsible for compliance could void the user's authority to operate the equipment.

Tc

## Laser Standard

EN 60825-1:2007

**Important**

*The product specifications above may be changed to improve device performance without prior notice.*

Tc


[Safety precautions](#)   [Features](#)   [How to install](#)   [How to use](#)   [How to store and clean](#)   [Troubleshooting](#)   [Specifications](#)

## Index

### Related links

<http://www.samsung-ODD.com>

<http://www.samsung.com>

### Select languages

Select your language

### Firmware Update

Check your firmware version.

### Warranty Statement

Warranty statement for your product

## Index

### Safety precautions

Safety precautions

During installation

During operation

Others

RoHS and WEEE

### Features

Exterior

System requirements

Features

### How to install

How to install the drive

How to confirm USB 2.0 and install the USB driver

How to confirm the installation of the device driver

How to remove the USB cable

How to update Firmware

How to remove the utilities

### How to use

How to use the drive

How to use DVD±R/RW and other discs

When the LED blinks

### How to store and clean

How to store the disc

How to clean the disc

### Troubleshooting

Troubleshooting

Caution: possible errors

### Specifications

Product specifications