



Samsung's OMS (Optical Media Solution) Customer Support Website (<http://www.samsung-ODD.com>) offers the latest versions of firmware for ODD products, user instructions and product information.

Select Language
English



The Statement of Warranty

<http://www.samsung.com>
<http://www.samsung-ODD.com>



▶ Main Page

▶ Safety Precautions

- ▶ Safety Precautions
- ▶ During Installing
- ▶ During Operating
- ▶ Others
- ▶ RoHS & WEEE

▶ Features

- ▶ Exterior
- ▶ System Requirements
- ▶ Features

▶ Install the External DVD Writer

- ▶ Installing Drive
- ▶ Removing USB Converter cable

▶ Device Driver

- ▶ Checking USB 2.0 and Installing USB Driver
- ▶ Firmware Update
- ▶ Confirming the Installation of Device Driver

▶ How To Use External DVD Writer

- ▶ How to Use the Drive
- ▶ How to Use DVD±R/RW and Other Discs
- ▶ MAGIC SPEED
- ▶ How to use the TruDirect

▶ Storing/Cleaning

- ▶ Storing the Disc
- ▶ Cleaning the Disc
- ▶ When the LED Blinks





▶ Troubleshooting

- ▶ Troubleshooting
- ▶ Caution: Possible Errors

▶ Specifications

Important to read and understand at all times



 Warning	This symbol indicates explanations about extremely dangerous matters. If users ignore this symbol and handle the device the wrong way, serious injury or death could result.
 Caution	This symbol indicates explanations about dangerous matters. If users ignore this symbol and handle the device the wrong way, damage to home or property could result.
	Important to read and understand at all times
	Do not disassemble

- Always make sure that the disc does not have a crack before use. If the disc has a crack (especially around the center hole), it is recommended to make a copy immediately and use the copy instead. When a cracked disc is used continuously, the size of the crack is likely to grow and this will eventually result in irreparable damage to the disc.



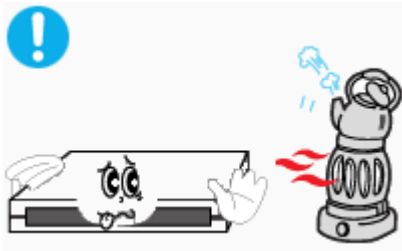
Installation



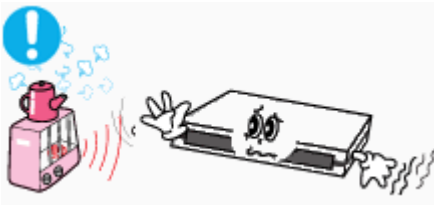
- Do not drop the drive, and protect it from severe shocks.
- It can damage the drive or cause it to malfunction.



- Do not place the drive in direct sunlight.



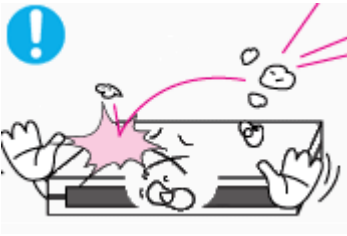
- Avoid low-or high-temperature environments.



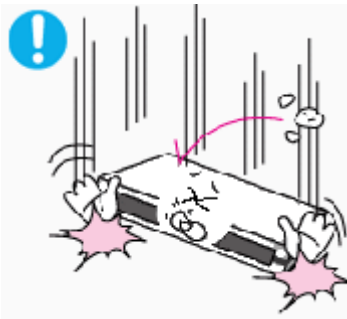
- Avoid high-humidity environments.



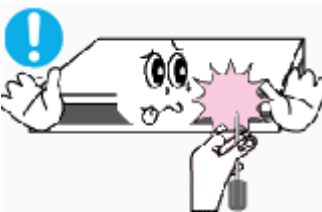
Operating



- ❖ Handle with caution to prevent damage from an external shock.



- ❖ Do not drop the drive, and protect it from severe shocks.
 - It can damage the drive or cause it to malfunction.



- ❖ Do not move the drive while in operation. Make sure to close all working programs before attempting to open and always use the open button.



Do not insert a pin into the emergency eject hole while in operation.



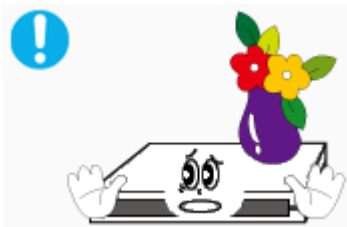
- ❖ Do not use cracked, distorted or damaged discs.



In particular, a disc with a crack on the inner tracks may break while in use.



- ❖ Do not disconnect the power cord while the drive is working.
 - This may result in an operational error.



- ❖ Do not put any heavy things on the drive.

- Always check to be sure the disc is not cracked before use. If you find a crack on the disc (especially around the center hole), make a copy of the disc immediately and use the copy instead. Continued use of a cracked disc will cause the crack to become bigger, resulting in irreparable damage to the disc.

- Do not use low-quality discs (illegal, scratched, damaged, etc.).

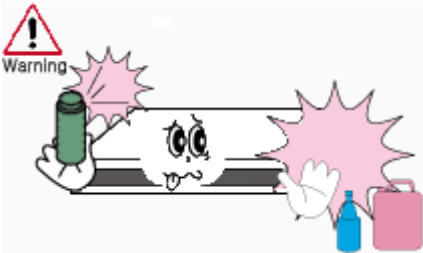
- **Samsung is not responsible for any loss resulting from the use of such discs.**



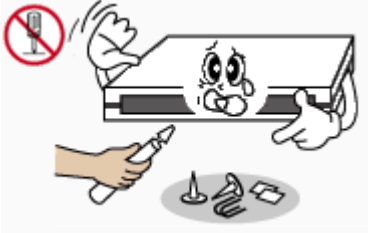
Others



- ❖ Never allow food particles or foreign substances to enter the drive casing.



- ❖ To protect against the risk of fire, do not spill such liquids as alcohol and benzene on the drive.



- ❖ Do not disassemble, attempt to repair or modify the device without an express approval as directed in the manual.
- To reduce the risk of damage, electric shock and fire.

RoHS

Samsung Eco-mark
The Samsung's own Eco mark helps consumers to easily understand that Samsung develops eco-friendly products. This mark represents Samsung's continuous effort to develop eco-friendly products.

RoHS (Restriction of the use of certain hazardous substances in electrical and electronic equipment)The RoHS, the environmental regulation announced by European Union, restricts the use of lead, mercury, cadmium, hexavalent chromium, PBB, and PBDE in products put on the market in The European Union after July 1, 2006.

WEEE***Correct Disposal of This Product (Waste Electrical & Electronic Equipment)***

(Applicable in the European Union and other European countries with separate collection systems)

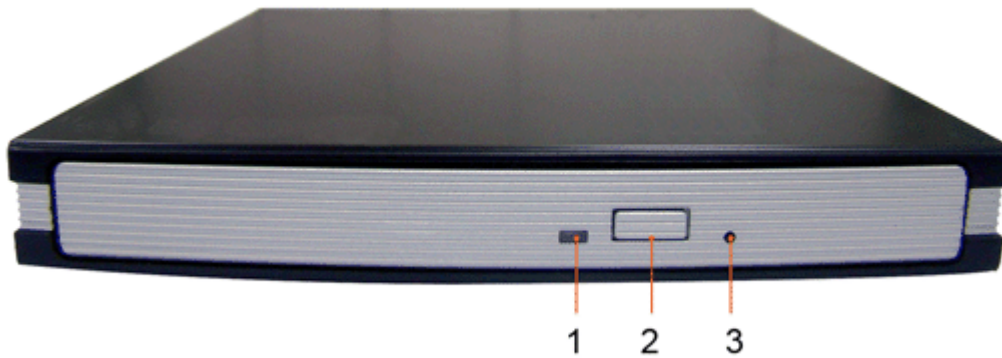


This mark shown on the product or its literature, indicates that it should not be disposed with other household wastes at the end of its working life. To prevent possible harm to the environment or human health from a uncontrolled waste disposal, please separate this from other types of wastes and recycle it responsibly to promote the sustainable reuse of material resources.

Household users should contact either the retailer where they purchased this product, or their local government office, for details of where and how they can take this item for environmentally safe recycling.

Business users should contact their supplier and check the terms and conditions of the purchase contract. This product should not be mixed with other commercial wastes for disposal.

Front



1. LED
3. Emergency Eject Hole

2. Eject Button

- Design and specifications are subject to change without prior notice.

Back



1. USB Interface Port

Components

- ▶ Quick installation Guide
- ▶ Application Software & User Manual CD
(Software: Nero Express 7 Essentials, InCD5, Nero Vision Essentials, Nero ShowTime Essentials, Nero BackItUp Essentials, Nero Recode Essentials, TruDirect)
- ▶ 2 Port Usb Cable
- ▶ Eject Pin

- The type of accessories varies depending on a product model.
and some accessories described herein are subject to change without notice.

System Requirements

You need to have an IBM-compatible PC with the following specifications.

Item	Description
OS	Microsoft Windows 2000(SP4)/XP(SP 1.0 or higher)/Vista
CPU	Pentium4 2.0GHz or above
RAM	512Mbytes or greater
Interface	USB 2.0 Interface connector

The drive's performance may not be able to achieve its maximum performance according to the PC system environment.

Features

Versatile Multimedia Features

- ▶ DVD-R : Read / Write
- ▶ DVD-RW : Read / Write / Rewrite allowed
- ▶ DVD+R : Read / Write
- ▶ DVD+RW : Read / Write / Rewrite allowed
- ▶ DVD-ROM : Read
- ▶ DVD+R Dual : Read / Write
- ▶ DVD-R Dual : Read / Write
- ▶ CD-R : Read / Write
- ▶ CD-RW : Read / Write / Rewrite allowed
- ▶ Supports Read (playback) for various types of discs
- ▶ DVD-RAM : Read/ Write/ Rewrite allowed

▶ See table below for details

	Soort disk	Writable	Rewritable	Read
CD	CD-STAMP	x	x	O
	CD-R	O	x	O
	CD-RW	O	O	O
	DVD-STAMP	x	x	O
DVD	DVD±R	O	x	O
	DVD-RW	O	O	O
	DVD+R(Dual)	O	x	O
	DVD-R(Dual)	O	x	O
	DVD+RW	O	O	O
	DVD-RAM	O	O	O

Writable : write once, read many times.

Rewritable : write data one or more times.



DVD Recommended Disc Types

▶ DVD-R Media

Taiyo-Yuden, TDK, MKM, Hitachi, Maxell, FujiFilm, PVC, Panasonic, RITEK, CMC, UNIFINO

▶ DVD-RW Media

TDK, MKM, JVC, PVC, RITEK, CMC

▶ DVD+R Media

RICOH, Taiyo-Yuden, MKM, RITEK, CMC, Prodisc, Optdisc

▶ DVD+RW Media

RICOH, MKM, RITEK, CMC

▶ DVD±R Dual

MKM

▶ DVD-RAM

Maxell, Taiyo-Yuden

CD Recommended Disc Types

▶ **CD-R Media**

Taiyo-Yuden, RICOH, MKM, Hitachi, Maxell, FujiFilm, RiTEK(Phtharo), CMC, Pioneer, Princo, TDK

▶ **CD-RW Media**

RICOH, MKM, RiTEK, CMC

▶ **HS CD-RW Media**

RICOH, MKM, CMC

▶ **US CD-RW Media**

MKM


● **Buffer underrun free technology**

▶ What is " buffer underrun free technology "?

A technology to prevent "**buffer underrun**" errors in which the data transmission speed is not as fast as the data writing speed when data is being recorded on a disc.

● **Reading / Recording Speed**

Format / Speed	Read	Write
DVD-RAM	PCAV 5X	PCAV 5X
DVD-R	CAV 8X	PCAV 8X
DVD-RW	CAV 8X	ZCLV 6X
DVD-R DL	CAV 8X	ZCLV 6X
DVD+R	CAV 8X	PCAV 8X
DVD+RW	CAV 8X	ZCLV 8X
DVD+R DL	CAV 8X	ZCLV 6X
DVD-ROM	CAV 8X	-
CD-R	CAV 24X	PCAV 24X
CD-RW	CAV 24X	ZCLV 24X
CD-ROM	CAV 24X	-





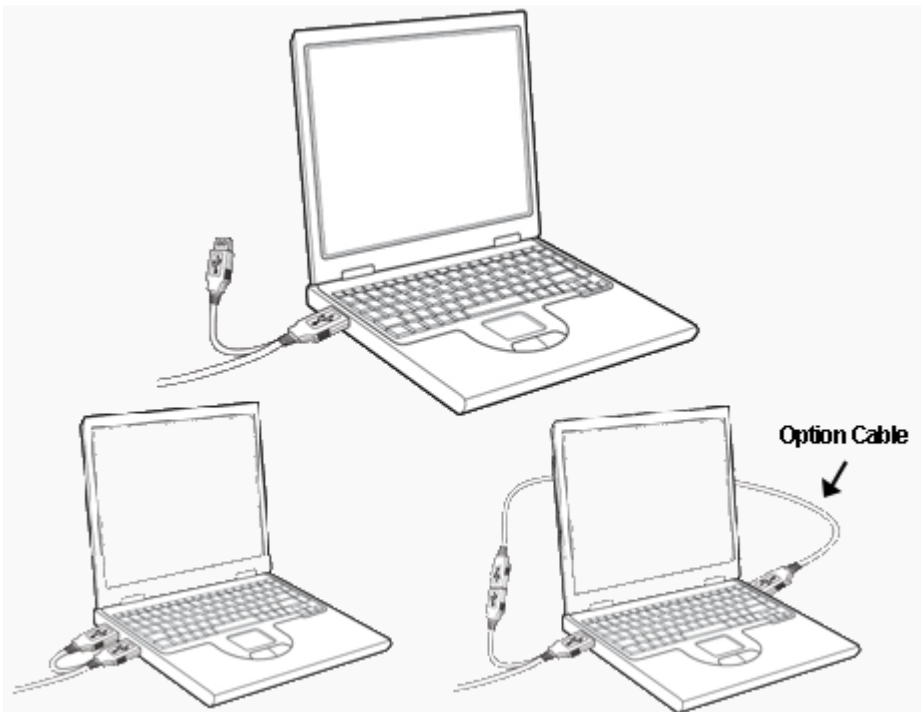
Installing Drive

1. Connect the necessary cables, then turn on the drive

- Connect the USB cable to the drive 's USB connector.



2. Connect the other end of the of the USB cable to your computer.



3. Normal operation is not guaranteed if using the USB HUB or unspecified cables.
4. PCs with insufficient USB bus power may not work properly if using a single-port USB bus power. To avoid this, use two ports in conjunction for power enhancement.



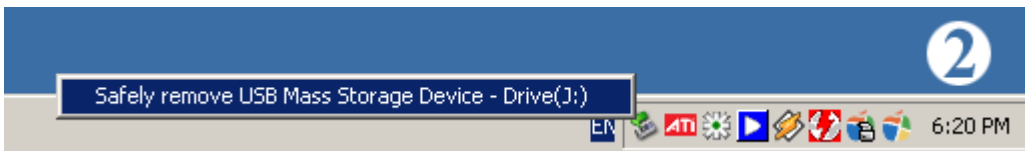
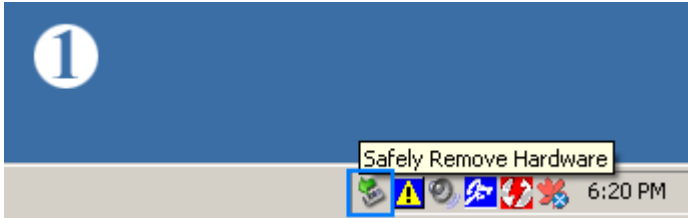
Caution

If your computer is not equipped with a USB connector, install a USB interface card.

Removing USB Converter Cable

- This drive uses Plug & Play function designed for Windows. Follow the procedures below to use a USB converter cable.

1. Close all the software programs which are currently being used.
2. Click the icon at the right bottom of the screen as shown in the picture.



3. Disconnect the USB converter cable.



Do not disconnect the USB converter cable while the drive is in operation or the computer is getting started.

Checking USB 2.0 and Installing USB Driver

● Checking USB 2.0

In order to use this drive at the speed of USB2.0 on PCs not supporting USB 2.0, you need to install USB 2.0 adapter card. Otherwise, this drive will operate by connecting USB 1.1, but within the speed range of USB 1.1. You can check the type of USB 2.0 adapter card for your PC as follows.

Windows 2000/XP/Vista

Right-click on My Computer icon on your desktop and select properties. Then, click on Hardware tab and Device Manager Button in order, and then check the information. If a yellow "exclamation point" appears next to Universal Serial Bus Controller, contact the card or PC manufacturer.





Firmware Update

1. Go to <http://www.samsung-ODD.com>
2. Click Firmware on the menu bar (in the upper right-hand corner).
3. Click Firmware Downloads. Check for your drive model and start downloading.

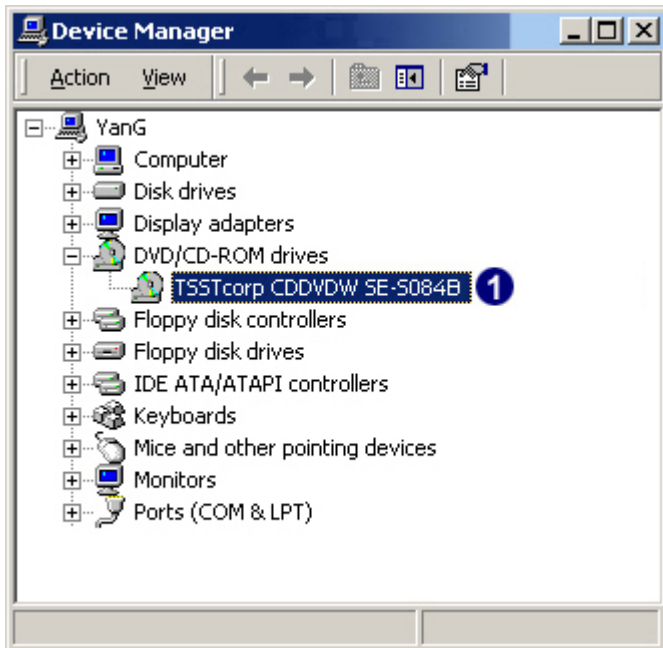




Confirming the Installation of Device Driver

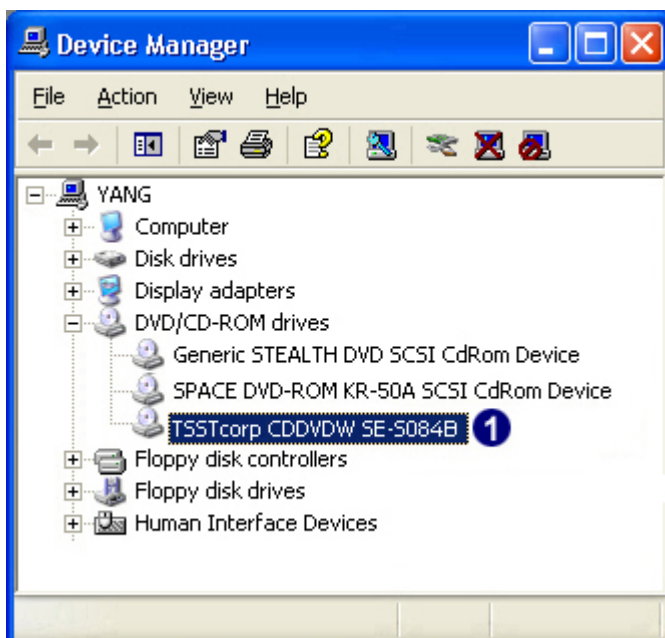
Confirming Using [Device Manager]

Windows 2000



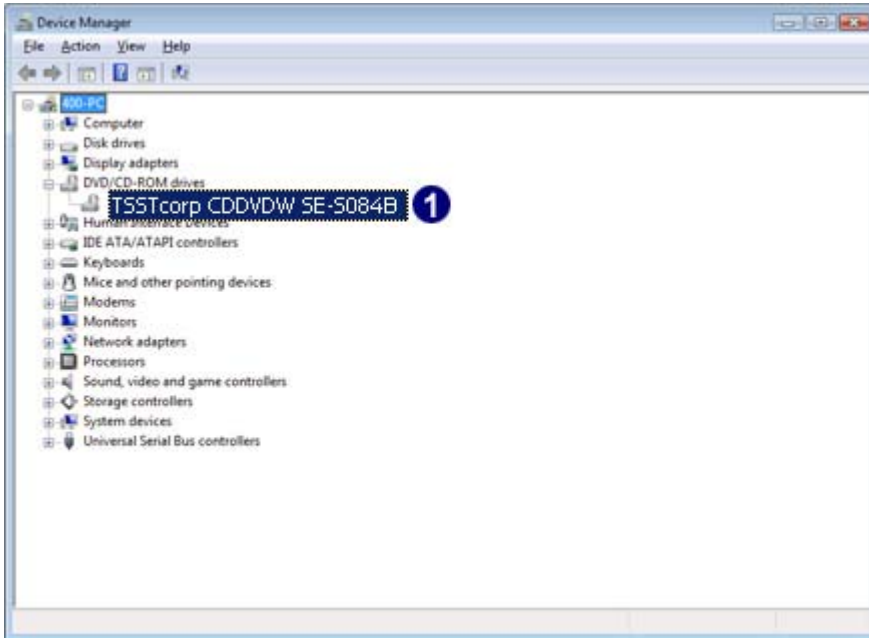
1. Click [Start] - [Settings] - [Control Panel] - [System]
2. Click on the [Hardware] tab in the System Properties window and then click on the [Device Manager] tab.
3. Click DVD-W drive in the Device Manager window.
1 in the left picture appears if the driver is installed properly.

Windows XP



1. Go to [Start] - [Settings] - [Control Panel] - [Performance and Maintenance]
2. Click [System] icon in the Performance and Maintenance window.
3. Click [Hardware] tab in the System Properties window.
4. Click the [Device Manager] button.
1 in the left picture appears if the driver is installed properly.

▶ Windows Vista



1. Click [Start] - [Control Panel] - [System] - [Device Manager].
2. Click DVD-W drive in the Device Manager window.
1 in the left picture appears if the driver is installed properly.

How to Use the Drive

When the LED is Green, do not turn the PC off or remove the External DVD Writer as it may cause damage in the drive.

● How to Use a Horizontally Installed Drive

You can use **3.15 Inch or 4.72 Inch (8cm or 12cm) disc.**

The drive cannot read the disc properly if any part of the disc is placed outside the tray guiding line.



- Do not use the external drive vertically.

Caution



How to Use DVD±R/RW and Other Discs



The External DVD Writer allows writing DVD±RW discs using Nero Express and enables "packet writing" (high-speed recording) using InCD. The drive also allows writing DVD±R discs using Nero Express.



Caution

Unauthorized copying of DVD or software titles is illegal and the individuals that make illegal copies will be held responsible for any copyright infringement. Using low-quality discs may lengthen the recording time or not supporting due to reduction in double speed.

- ▶ You can use the External DVD Writer to playback music CDs, CD-ROM, CD-R/RW, or DVD-ROM discs, like a CD-ROM drive or a DVD-ROM drive. If your computer recognizes the [CD-ROM] icon designated to the External DVD Writer as the 'E:' drive, insert a CD-ROM or a DVD-ROM disc and access the 'E:' drive.
- ▶ if you want to use this product to play a commercial DVD-Video title("DVD title")
 - Most of DVD titles in the market adopt the Dolby sound system. You are required to install software that supports Dolby decoding on your PC before you can play a DVD title using the DVD writer purchased.
 - How to obtain commercial software supporting Dolby decoding
Visit the website of Nero: <http://www.nero.com>
(You can use other compliant software if you want to.)

DVD Region Protection Coding (RPC):

The RPC feature is supported on DVD players and is used with DVD-video discs (such as movies). Currently, the motion picture industry has divided the world into different regions or zones that correspond to the regional markets into which the motion picture industry releases movies. Simply put, RPC codes are placed on movies marketed throughout the world, based on the region of the world in which they are being sold. These RPC codes help control and prevent pirating of new movies into other motion picture regions prior to their true release dates within those markets.

The External DVD Writer supports RPCphase II. In the RPC-2 mode, the local code can be changed by users. RPC-2is selected by default for the External DVD Writer.

You can change the region code up to five times via an MPEG application.

Please contact your dealer or local SAMSUNG representative if you wish to change the local code more than five times.



▶ What is a MAGIC SPEED?

MAGIC SPEED is a program that supports user to select at his or her discretion the reading speed of CD disc between two modes offered by drive: Maximum Speed Mode (Max Mode) and Silent Mode.

▶ Development Background

ODD products launched nowadays are providing a high reading speed. With the increased reading speed, faster data processing has become possible. However, high rotation speed often causes louder noise, and it is more possible to crash the cracked or bent discs. Against this backdrop, our Company has developed a speed-down algorithm and applied this technology to newly-launched products to provide safer and more comfortable environments for PC users.

※ What is Speed-down Algorithm?

It establishes a safer disc reading speed in operating the device in order to prevent possible disc crashes in using CDs with cracks in starting. In addition, for customers who want to play CDs at its maximum speed, MAGIC SPEED program offers the function of selecting reading speed, so that customers can set the speed as they want. (Recording speed will run at recordable speed without limit)

▶ What Are MAGIC SPEED Mode and How to Use

MAGIC SPEED Mode

- Max Mode: Setting reading speed to its maximum level provided by drive.
- Silent Mode: Setting reading speed to a stable low speed.
- Any mode set by Magic Speed will be reset to "Low noise mode" when the PC restarts, so please check the current mode if you want to use "The maximum speed mode" and change the settings where necessary.

Caution: A disc with crack may be crashed in playing with Max Mode. We recommend you to use such disc in Silent Mode, or make a copy immediately before use.

How to Use MAGIC SPEED

- First, install MAGIC SPEED program registered on our website.
- On MAGIC SPEED tray icon, select right-click to execute the program.
- Select the mode you want to use on Program Execution Window and select "settings". Then, reading speed of the drive will run in selected mode.
- Select "Close" to exit Program Execution Window. In this occasion, reading speed will be run in the set speed if there is no separate mode change or program exit.
- ※ We recommend you to use "Max Mode" for data copy or disc copy, and "Silent Mode" for normal operation.
- ※ Other functions
 - ▶ To disable Auto Run
 - This is a default program that automatically runs in every PC booting.
 - If you want to quit this auto run function, deselect the auto run item selected on tray icon menu.

Where Can I Download MAGIC SPEED?

Visit our website for customer support (URL:<http://www.samsung-ODD.com>), and select Firmware → MAGIC SPEED.



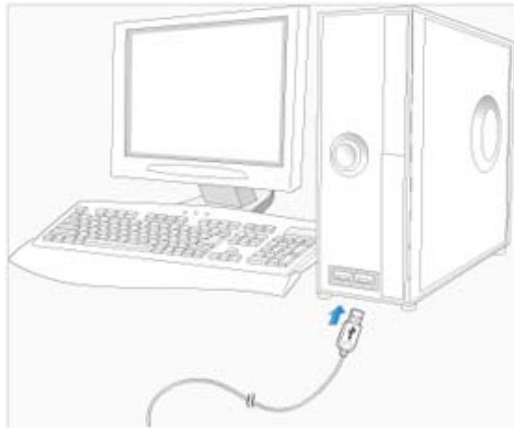
How to use the TruDirect

1. Connect the Video/Audio devices to your computer before you start TruDirect.

Camcorder, Digital Camera,
Webcam...



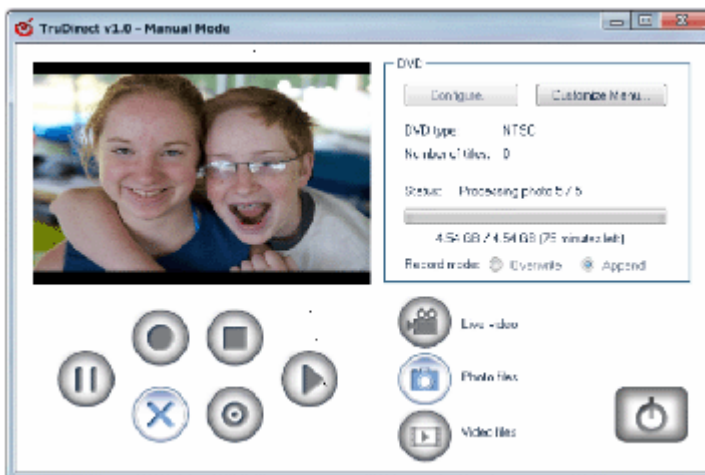
IEEE 1394
USB
Composite



2. Click the TruDirect Program Shortcut on your Desktop of Windows.



3. Make the DVD title from Live Video, Photo Files, Video Files.



4. Play DVDs made with TruDirect on your DVD player or PC.



← UP



**This part of the manual is to prevent damages or data loss.
Read carefully and use the device properly.**

Storing the Disc

- ▶ Do not place it under the direct sunlight.
- ▶ Place it so that it sits on its side on a flat surface.
- ▶ Do not scratch or place a label on the disc.
- ▶ Handle the disc with caution to prevent damage from external shock.
- ▶ Do not expose it to severe temperature fluctuations.
(Exposure to such environment may cause congealing.)





**This part of the manual is to prevent damages or data loss.
Read carefully and use the device properly.**

Cleaning the Disc

- Do not touch the surface of the disc.
Place your fingers on the edge of the disc to hold.
- Clean the disc lightly with soft cotton cloth, starting from the center and move to the edge of the disc.
- Use only disc-cleaning liquids. Do not use benzene, paint thinner, or any other solvents.



If the disc surface becomes dirty with fingerprints, foreign substances or dust, the disc may not function properly.

When the LED blinks

LED	Meaning
Disc Lead-In	Green: Blinks every 0.3 seconds.
Writing	Green: Blinks every 0.3 seconds.
Reading	Green: Blinks every 0.3 seconds.
Audio Playback [Analog Mode]	Green: Blinks every 0.3 seconds.
Audio Playback [Digital Mode]	Green: Blinks every 0.3 seconds.
Standby	Off
No Disc	Off



The indicator light turns off when the drive is not in use (standby) after disc lead-in.

Troubleshooting

Problem	Meaning / Solution
The eject key is not working properly.	<p>See if the Drive is on.</p> <p>If the disc still won't eject with the power-on, remove USB cable, Power cord and insert an eject pin into the emergency eject hole to open.</p>
The PC is not working properly.	<p>See if the drive is properly connected to the PC.</p> <p>See if the floppy disc remains in the PC.</p>
The drive is not working properly.	<p>See if the drive is connected properly to the PC.</p> <p>See if the device drive program has been installed properly.</p>
No sound is heard from an audio CD.	<p>Check that the sound card is operational.</p> <p>Check the condition of the CD and wipe the surface of the CD clean before use.</p>
The computer doesn't recognize the drive.	<p>USB cable is not connected properly between the computer USB port and the drive .</p> <p>Ensure that both connectors of the USB cable is properly connected to the USB ports on the computer and the drive.</p> <p>Can be an OS problem. Try to reinstall the Windows OS program.</p>
The system dosen't read the disc.	<p>See if the system detects the drive.</p> <p>Make sure you use the types of discs that are supported by the drive.</p> <p>See if the LED turns into green.</p> <p>Make sure you inserted the disc with the label facing up.</p> <p>Make sure you are using the right program for disc playback.</p> <p>See if the disc is clean.</p> <p>See if any congealing has occurred.</p> <p>Make sure the region code of the drive matches the disc number.</p>

You can confirm the use of software at the site of our customer support.

Address: www.samsung-ODD.com

- See " Support > Download center > User Manual ".

Caution: Possible Errors

External DVD Writer record data on the disc by applying laser light onto the surface of the disc, and therefore writing errors may occur if you use a damaged disc, for example. Be sure to eliminate the following error-causing elements before you start writing:

* The following settings are recommended for all External DVD Writer:

- 1. Avoid a situation that requires multitasking, and remove turn off the screen saver.**
 - A buffer underrun may occur if the system multitasks while the External DVD Writer CD-RW drive is writing/erasing.
- 2. Block any outside attempt to access the host PC during a writing session.**
 - An error may occur if another user accesses the printer connected to his/her the system via the network during a writing session.
- 3. Disable the CD auto-run feature of the CD.**
 - Inserting an auto-run-enabled CD in to another drive connected to the same system during a writing/erasing session may cause an error.
- 4. It is recommended that you use the image file format when you write a large number of small-sized files.**
 - When there are a large number of small-sized files to write, the system's transfer rate drops and the Superlink feature works at a more frequent rate, resulting in lower writing quality.
 - If you are doing a CD-to-CD write, it is not necessary to check to see if you have available space on your hard disc beforehand.

However, in the case of image files, it is recommended that you be sure you have at least twice the amount of space needed for the data on your hard disc, as image files are copied to the hard disc before they are copied to the CD.

- 5. Do not use more than one type of writing software.**
 - Before you install a writing program, be sure to first uninstall existing versions of the program or other writing program(s) and reboot the system first .

(The Windows operating system may be damaged if you install the Korean version while the English version remains on the system.)

- **Use only the writing software provided by Samsung.
You may experience writing errors if you use with other writing programs.**

The write speed for a disc can be restricted if:

- 1. ■ The disc has bad properties data, and or there are other discs with different properties available under the same ID.**
The drive's write strategy is set in a way that the drive examines to examine the disc properties and determines the optimal write conditions for those properties.

For example, many disc makers do not bother to insert property information distinguishing 48X discs from 32X discs. Since the two types of discs have the same properties data, although they actually have different properties, it is often impossible to respond to the situation with a single write strategy. In order to ensure stable writing, it is necessary to downgrade the write speed.

If discs from two different disc makers have the same write speed according to the labels, but actually have different write speeds, it is necessary to downgrade the write speed to ensure stable writing.

- 2. ■ Samsung's Standards for Write Speed Restriction.**

Standards 1 Write speed is downgraded for the sake of write stability, if high-speed discs available in the market have particularly bad properties data, or there are low-speed discs available under the same ID.

Standards 2 Speed-restricted discs go through further examination and adjustments later. If high-speed discs are available under the same ID with as low-speed discs (speed restricted at present), the speed restriction is removed when the low-speed counterparts become no longer unavailable in the market under the same ID.



You may experience lower write quality in case if you use disc products by some disc makers which that are not registered with the product's firmware. Therefore, it is recommended that you use only discs by recommended companies. Even, and even if the write session is completed successfully, check the write quality before you put the disc in storage, especially in case of an important data backup.



(Samsung is not responsible for any loss resulting from data backup failure.)

We update the list of supported media on a regular basis through our firmware upgrades

UP



Specifications

Category **SE-S084B**
External DVD Writer

DISC	Usable Discs	DVD :DVD-R, DVD-RW, DVD+R, DVD+RW, DVD-ROM, DVD-Video, DVD+R (Dual), DVD-R (Dual), DVD-RAM
		CD : CD-ROM, CD-R, CD-RW, CD-DA, CD+E(G) CD-MIDI, CD-TEXT, CD-ROM XA, Mixed Mode CD CD-I, CD-I Bridge (Photo-CD, Video-CD), Multisession CD (Photo-CD, CD-EXTRA, Portfolio)
	Disc Diameter	4.72 Inch or 3.15 Inch (120mm or 80mm)
Interface Support	Interface Port	USB 2.0
ACCESS TIME (Random)	CD-ROM	160ms (Random)
	DVD-ROM	160ms (Random)

Disc Labeling Time	Media Type	Setting	Titles only	The entire label area (including graphics)
	CD Media	Best	Less than 3:30 min	Less than 28:00 min
	DVD Media	Best	Less than 3:30 min	Less than 30:00 min

	Format/Speed	Read	Write
Data Transfer Speed(Max)	DVD-RAM	PCAV 5X	PCAV 5X
	DVD-R	CAV 8X	PCAV 8X
	DVD-RW	CAV 8X	ZCLV 6X
	DVD-R DL	CAV 8X	ZCLV 6X
	DVD+R	CAV 8X	PCAV 8X
	DVD+RW	CAV 8X	ZCLV 8X
	DVD+R DL	CAV 8X	ZCLV 6X
	DVD-ROM	CAV 8X	-
	CD-R	CAV 24X	PCAV 24X
	CD-RW	CAV 24X	ZCLV 24X
	CD-ROM	CAV 24X	-

Buffer Memory	2MB
Drive Installation	Horizontal
Operating Environment	Temperature 41°F ~ 104 °F (5°C ~ 40°C) Humidity 10% ~ 80% (RH)
Size(Width x Height x Length)	141 X 19 X 157mm
Weight	370g

Note

- ▶ Do not support DVD-R for Authoring.
- ▶ Cannot playback or record on both sides of a dual layer disc simultaneously.
- ▶ The read/write capacity of the supported discs depends on the condition of the disc and the recording format of the drive. Therefore, the read/write quality may not be perfect.
- ▶ Severe vibration or external impact may decrease the quality of printed images. Please firmly place the product onto the PC before use.
- ▶ In case of disc identification error message, thoroughly clean the surface of the disc where the label is presented and then start printing.
- ▶ The quality of the printed image cannot be ensured if printing an image on the area which is already used for printing.
- ▶ For more information on the writing and duplicating the Lightscribe disk label, install Nero software and refer to the HELP section.



FCC information to the user

This equipment has been tested and found to comply with the limits for a class B digital device. pursuant to part 15 of the FCC rules.

These limits are designed to provide reasonable protection against harmful interference in a residential installation. this equipment generates.

Uses and can radiate radio frequency energy and, if not installed and used in accordance with the instructions, may cause harmful interference to radio communications. However, there is no guarantee that interference will not occur in a particular installation.

If this equipment does cause harmful interference to radio or television reception Which can be determined by turning the equipment off and on. The user is encouraged to try to correct the interference by one or more of the following measures.

- ▶ Reorient or relocate the receiving antenna.
- ▶ Increase the separation between the equipment and receiver.
- ▶ Connect the equipment into an outlet on a circuit different from that to which the receiver is connected.
- ▶ Consult the dealer or an experienced radio TV technician for help.

CAUTION

Change or modifications not expressly approded by the manufacturer responsible for comliance could void the user's authority to operate the equipment.



Laser Standand

IEC 60825-1 : 1993 + A1 : 1997 + A2 : 2001



The product specifications above may be changed to improve device performance without prior notice.