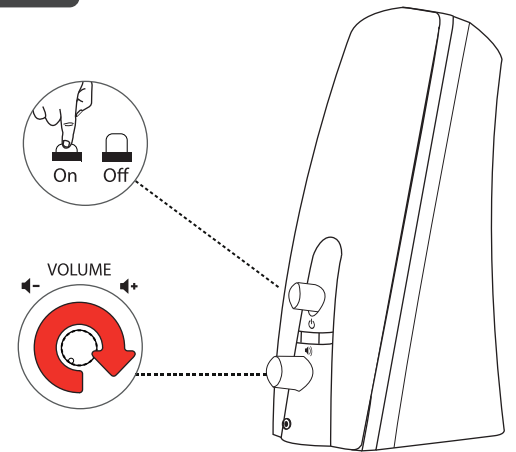
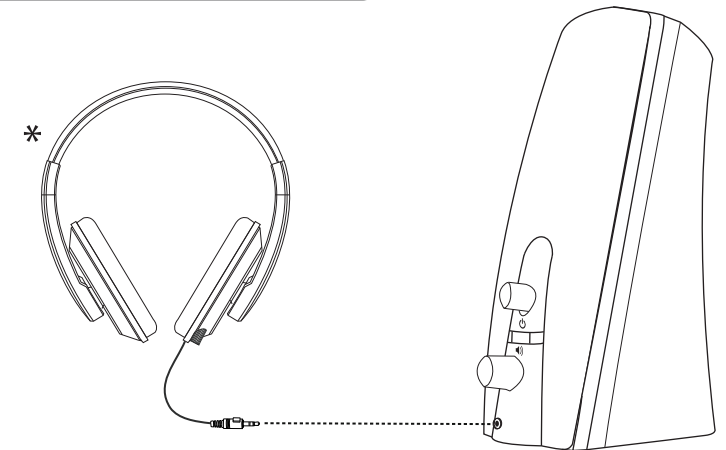


#### 4. Volume control



#### 5. Connect headphone



\* Not Included

#### FAQ

Frequently asked questions  
[www.trust.com/16697/faq](http://www.trust.com/16697/faq)

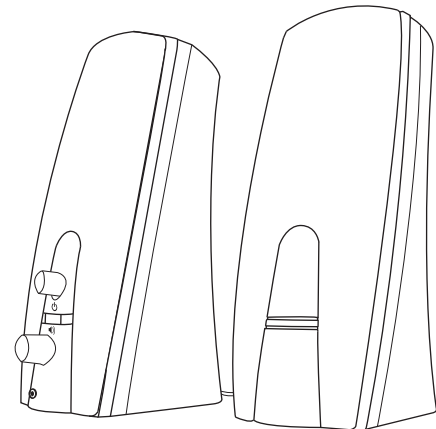
Trust International BV  
Laan van Barcelona 600  
3317DD, Dordrecht, NL

© 28-06-2016 Trust International B.V. All rights reserved.

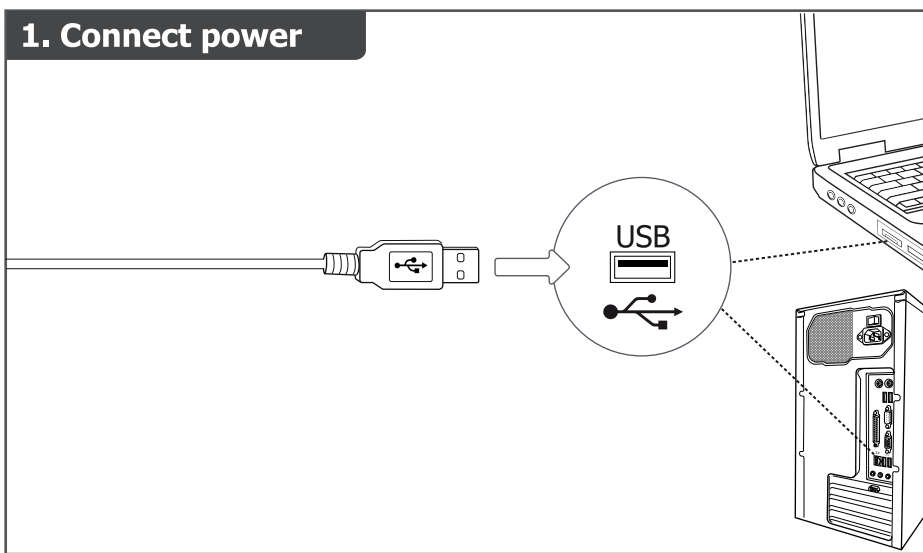
**Trust**  
2.0 Speaker set



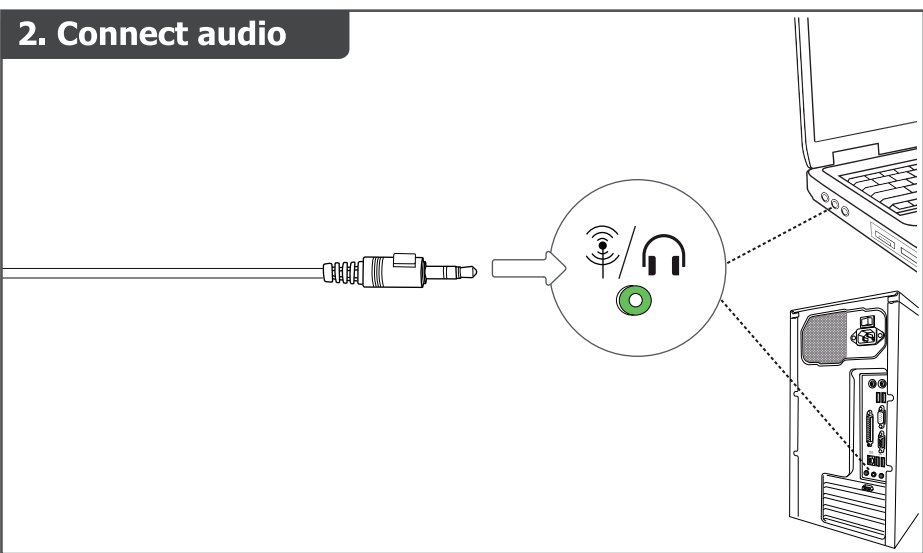
Quick Installation Guide



### 1. Connect power

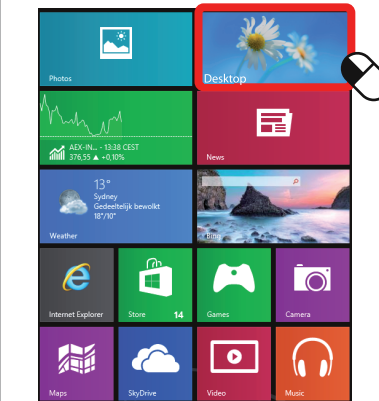


### 2. Connect audio



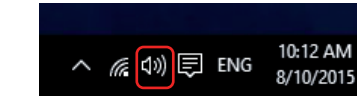
### 3. Installation - Windows 10/8/7/Vista

Only for Windows 8



Windows 10/7/Vista  
Start here

1



2

