

GM-733 gaming mouse manual

----with software

System Requirement:

- 1 Windows XP/ Windows Vista /Windows 7 /Windows 8 operating system
- 1 Interface : USB 1.1/2.0
- 1 CD-ROM drive
- 1 30 MB of available hard disk space

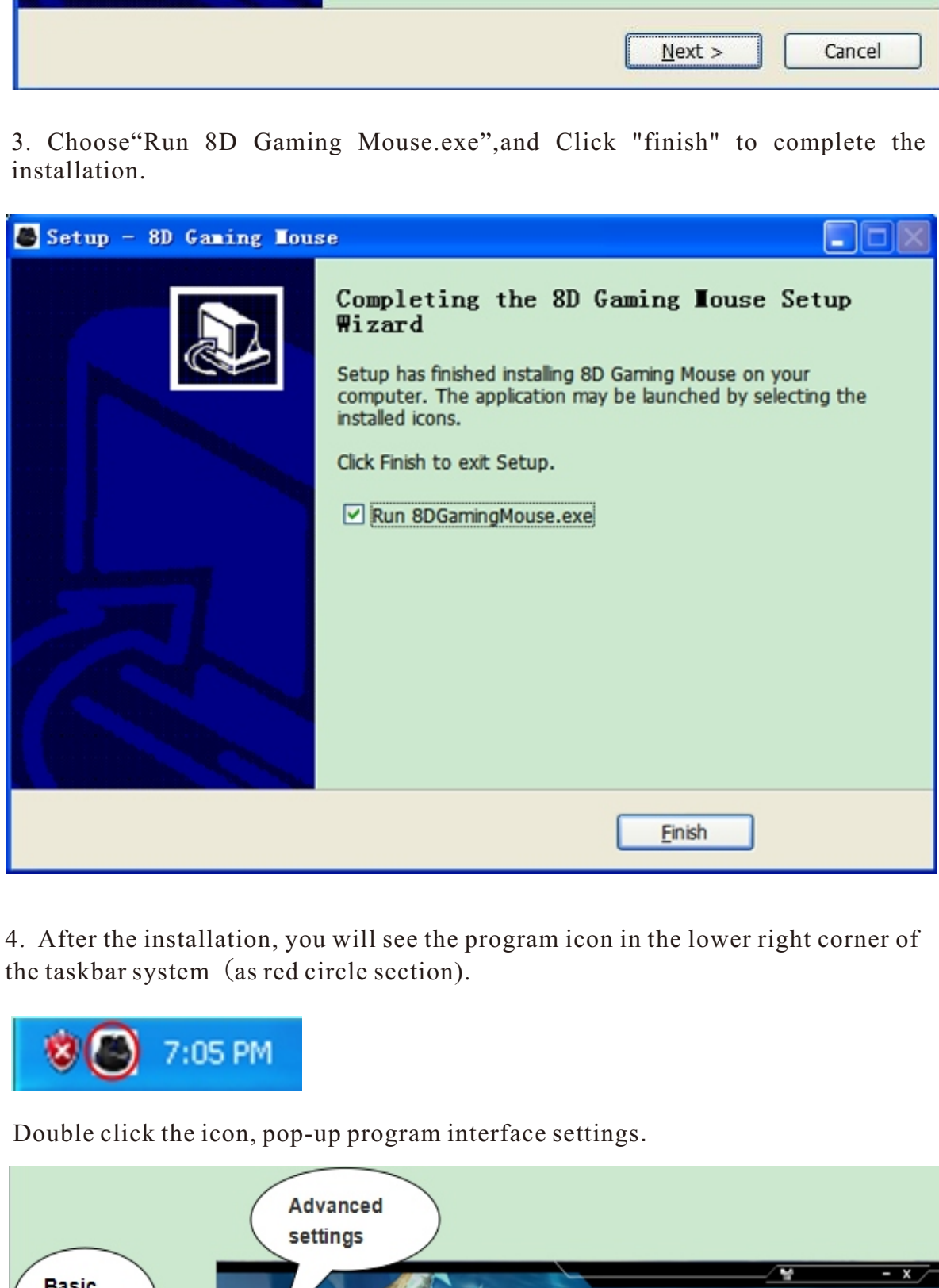
Installation

At first,the gaming mouse interface plug into computer,put driver disk into computer.Then follow below steps to install the game drive.

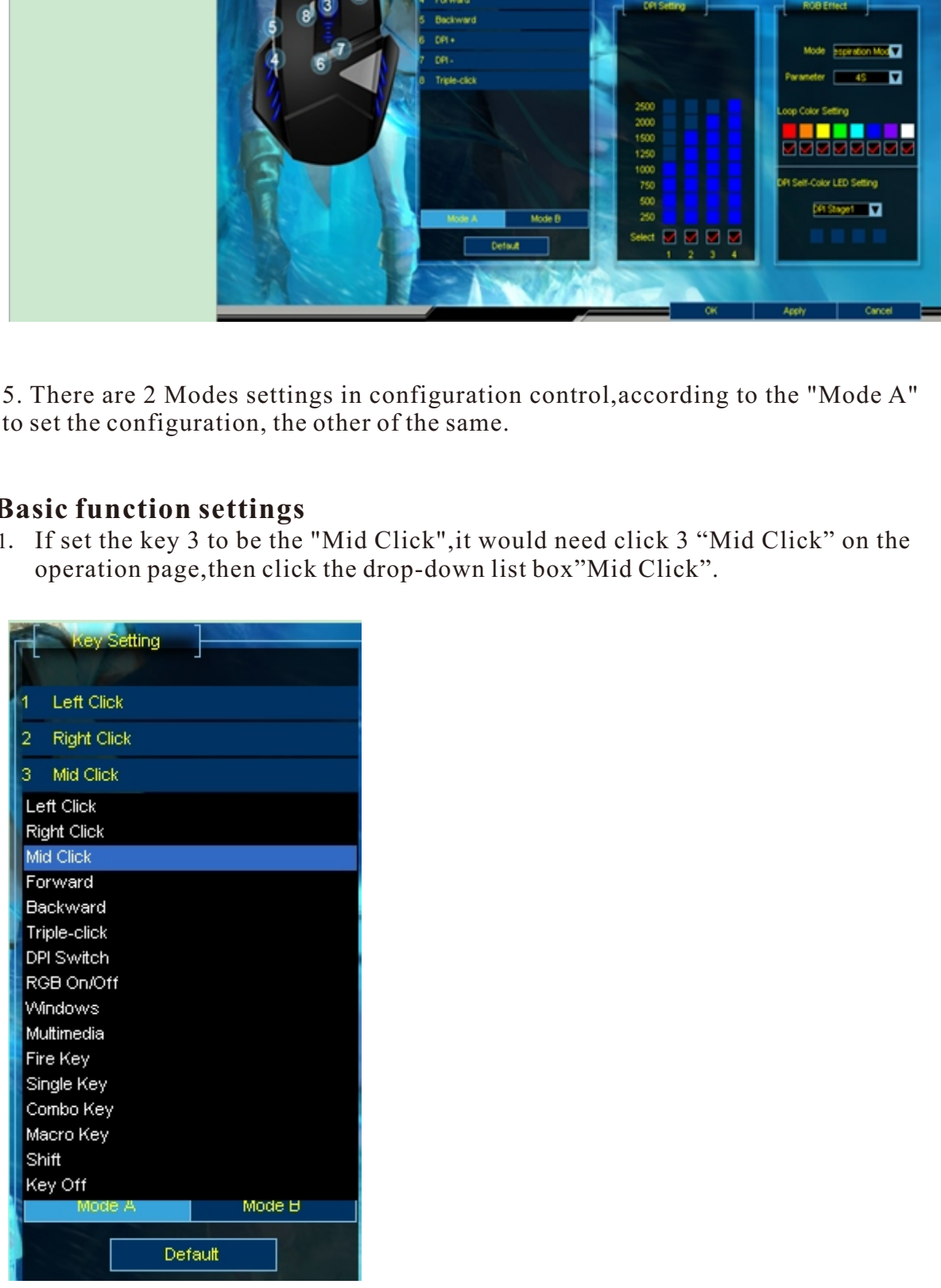
1. Open the driver installation file,and double-click the following file Icon.



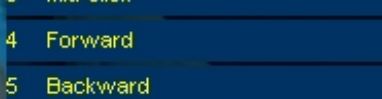
2. Click on "next"



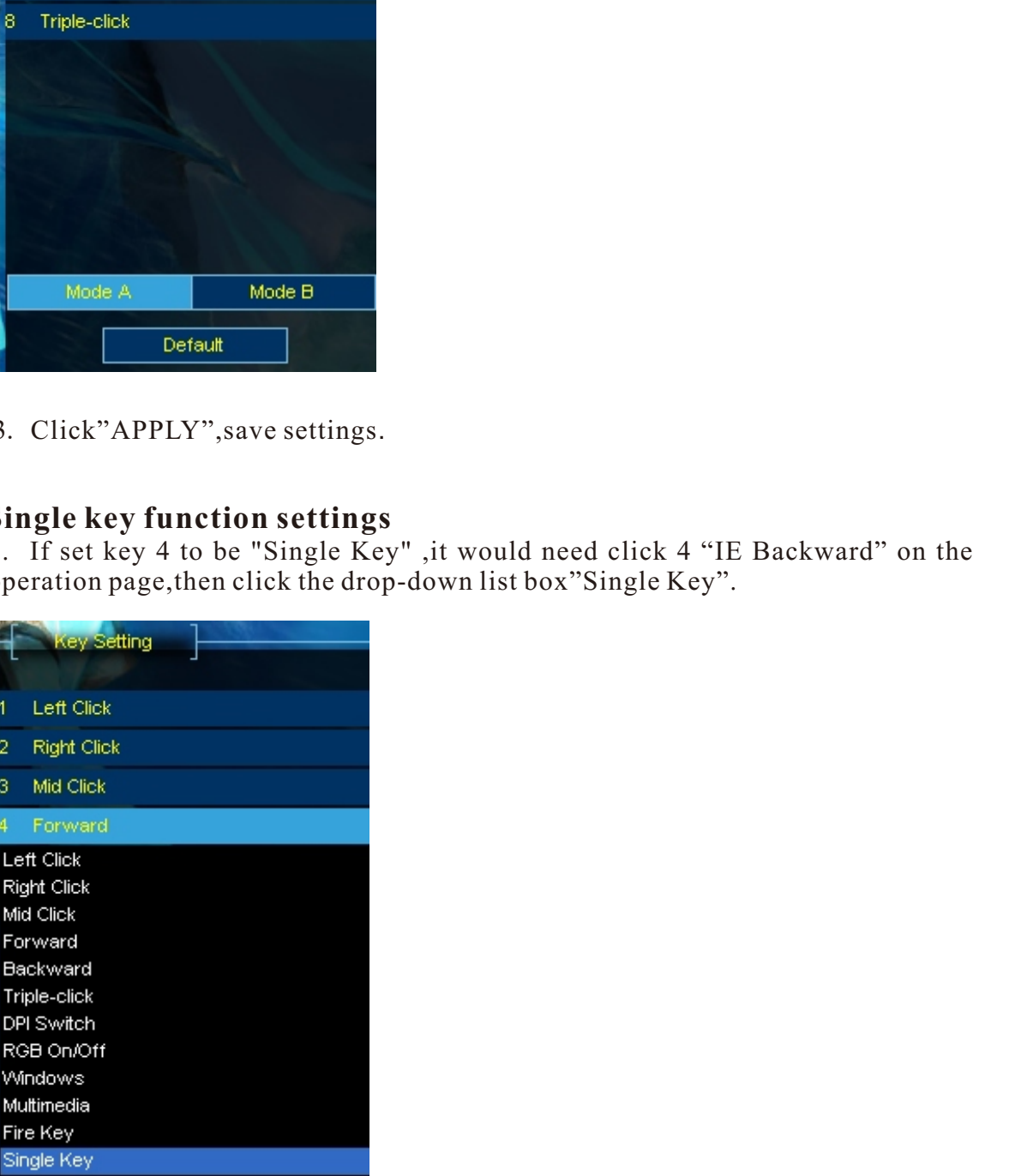
3. Choose"Run 8D Gaming Mouse.exe",and Click "finish" to complete the installation.



4. After the installation, you will see the program icon in the lower right corner of the taskbar system (as red circle section).



Double click the icon, pop-up program interface settings.



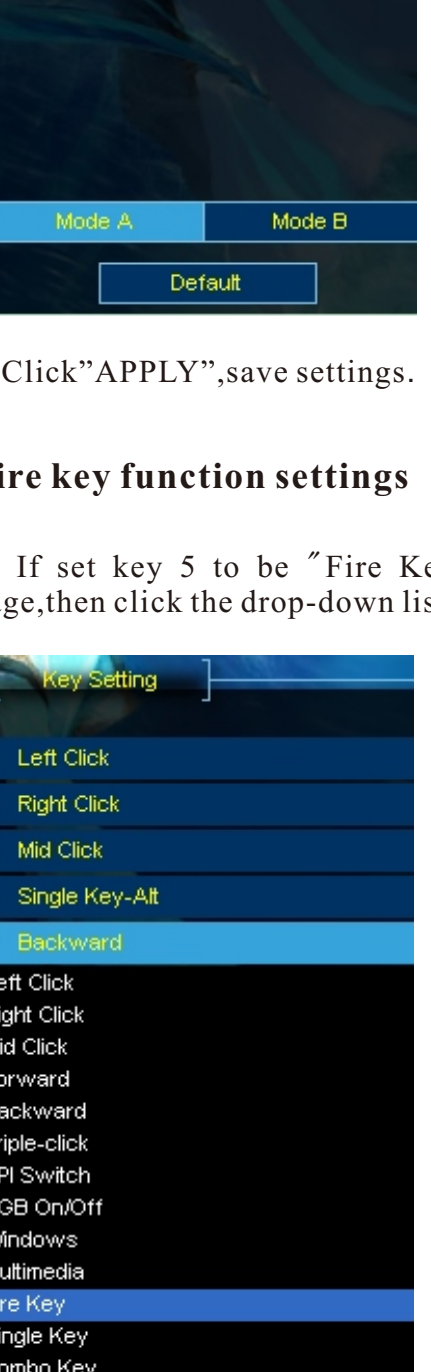
5. There are 2 Modes settings in configuration control,according to the "Mode A" to set the configuration, the other of the same.

Basic function settings

1. If set the key 3 to be the "Mid Click",it would need click 3 "Mid Click" on the operation page,then click the drop-down list box"Mid Click".



2. This moment,the key 3 configuration as shown below.



3. Click"APPLY",save settings.

Single key function settings

1. If set key 4 to be "Single Key",it would need click 4 "IE Backward" on the operation page,then click the drop-down list box"Single Key".



2. A pop-up window, as shown below.



3. From the keyboard input of any key,such as the left "Alt",the window space below is shown "Alt";Then click "OK" to save the settings, close the dialog box.



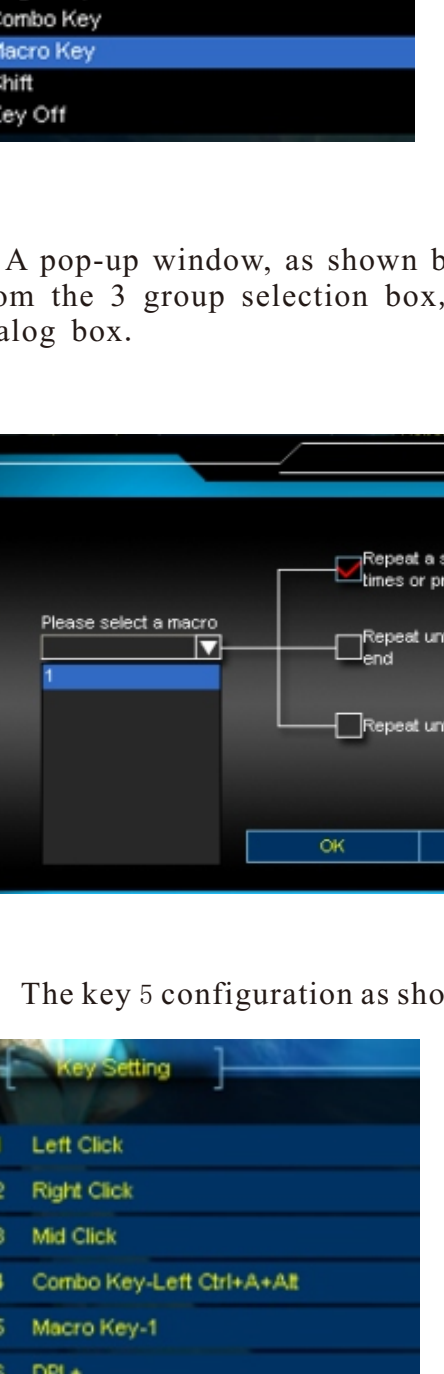
4. The key 4 configuration as shown below.



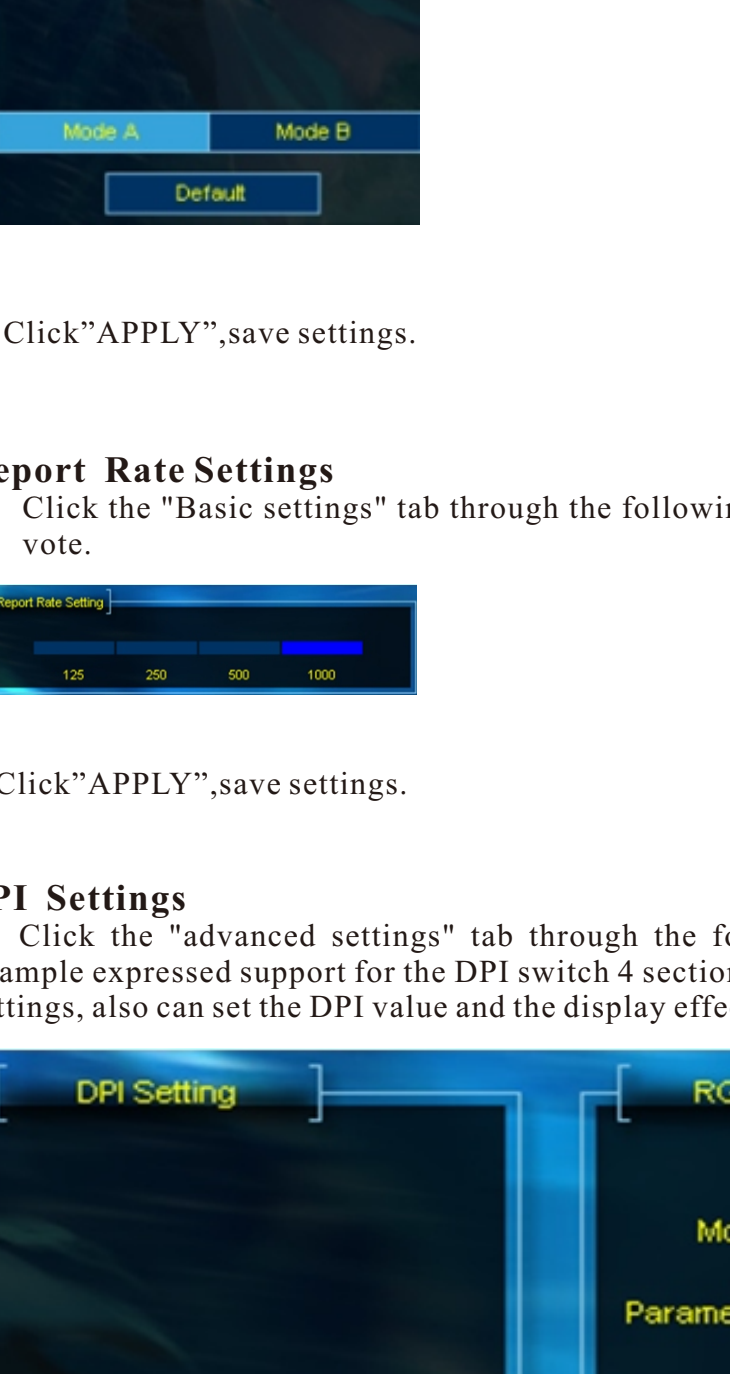
5. Click"APPLY",save settings.

Fire key function settings

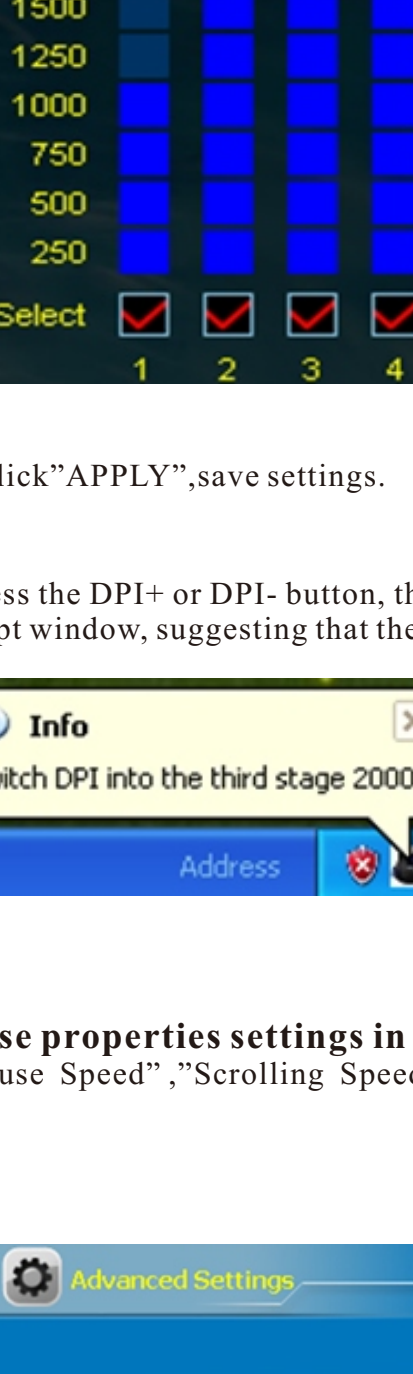
1. If set key 5 to be "Fire Key",it would need click 5 "Backward" on the operation page,then click the drop-down list box "Fire Key".



2. A pop-up window, as shown below. Input the Speed and the number of times. Pls refer to the text. Then click "OK" to save the settings, close the dialog box.



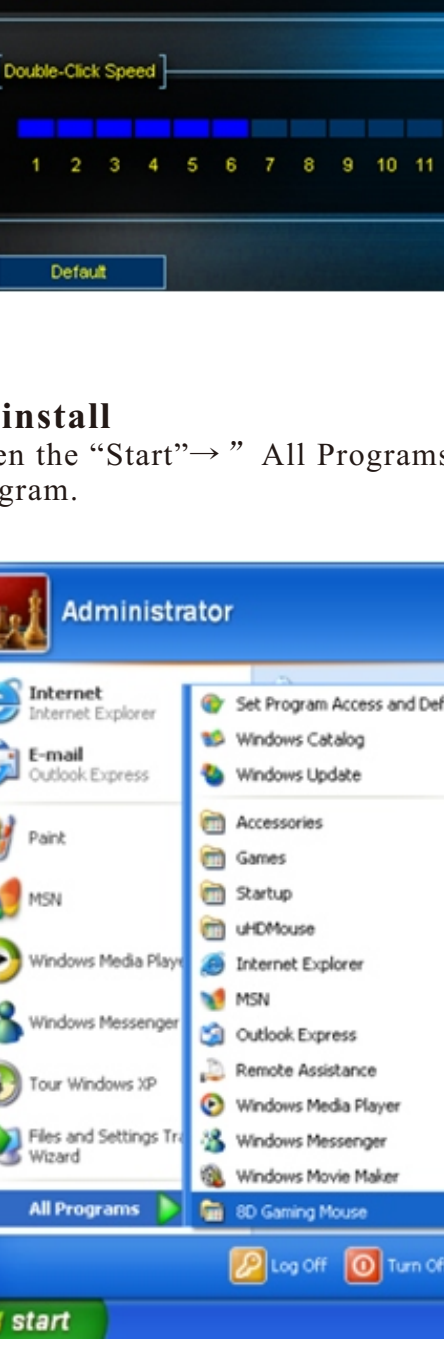
3. The key 5 configuration as shown below.



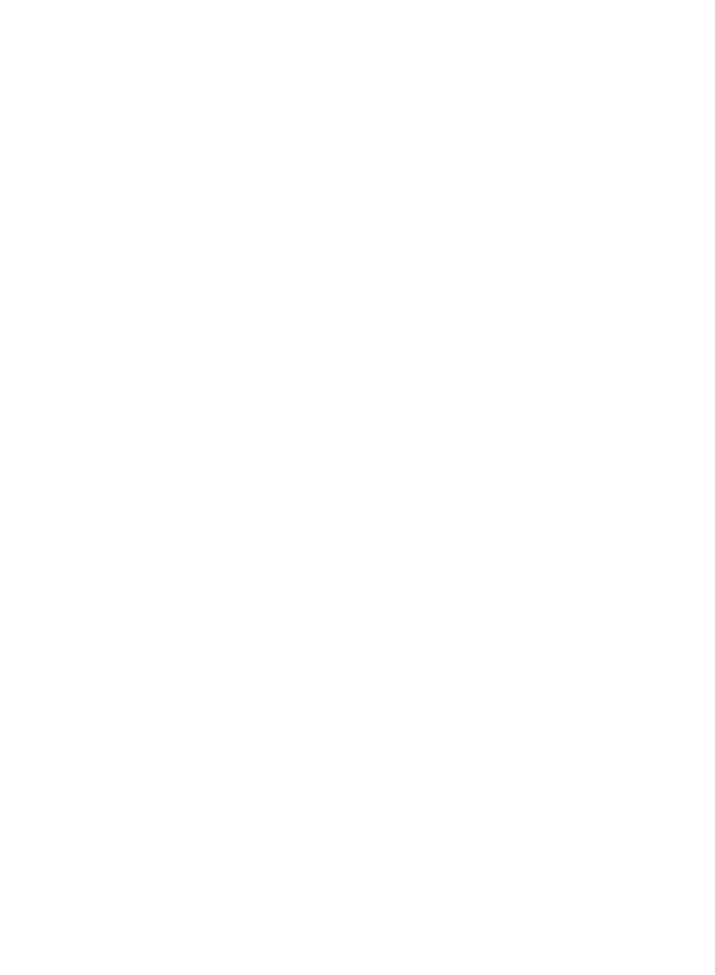
4. Click"APPLY",save settings.

Combo Key function settings

1. If set key 4 to be "Combo Key",it would need click 4 "Single Key-Alt" on the operation page,then click the drop-down list box"Combo Key".



2. A pop-up window, as shown below. In the edit box to enter any key on the keyboard, as shown in the following figure "Ctrl+A+Alt". Then click "OK" to save the settings, close the dialog box.



3. The key 4 configuration as shown below.

4. Click"APPLY",save settings.

Assign Macro settings

1. If set 5 key to be macro definition,first click "Advanced settings"option,make macro set.Enter macro name in the "Macro Name" edit box,for example of the "1";Click the "new" button, then click "start recording" button,input a set of keys,for example of the "shift+A+B".Click the "stop recording" button to complete the record,enter the digital in the "Loop Times" edit box, to circulate the executions macros, finally,click "confirm" button to save the setting.

2. Return the "Basic Setting"option, click 5 "Fire Key-A" on the operation page,then click the drop-down list box"Macro Key".

3. A pop-up window, as shown below,select Macro "1", and select an option settings from the 3 group selection box, then click "OK" to save the settings and close the dialog box.

4. The key 5 configuration as shown below.

5. Click"APPLY",save settings.

Report Rate Settings

1. Click the "Basic settings" tab through the following settings to select different rate of vote.

2. Click"APPLY",save settings.

DPI Settings

1. Click the "advanced settings" tab through the following settings to set the DPI,for example expressed support for the DPI switch 4 section, click the color box to the DPI color settings, also can set the DPI value and the display effect.

2. Click"APPLY",save settings.

3. Press the DPI+ or DPI- button, the program tray icon in the system tray will pop bubbles prompt window, suggesting that the current DPI.

Mouse properties settings in the system

"Mouse Speed", "Scrolling Speed", "Double-click Speed " can be adjusted.

