

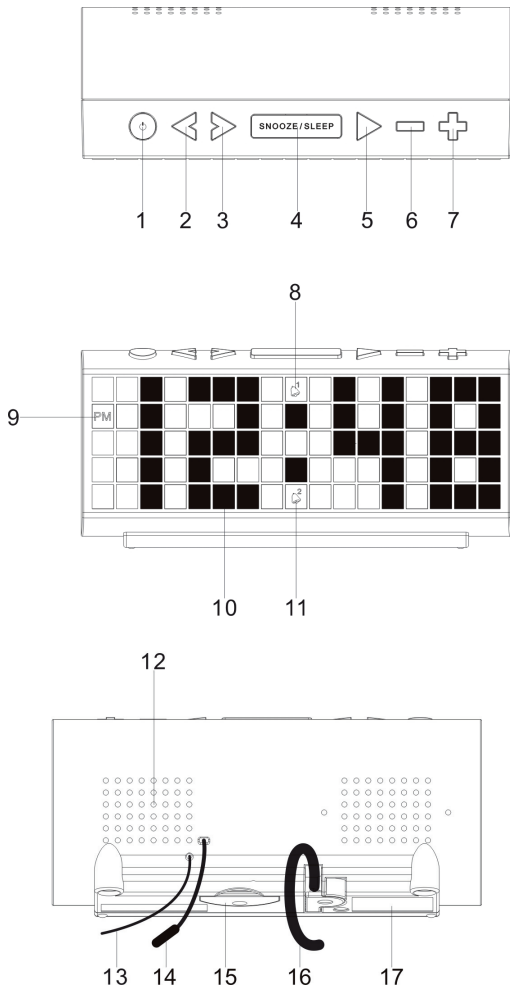
# SENCOR®

## SRC 190

**USER'S MANUAL  
NÁVOD K OBSLUZE  
NÁVOD NA OBSLUHU  
FELHASZNÁLÓI KÉZIKÖNYV  
INSTRUKCJA OBSŁUGI**

**Alarm radio clock  
Radiobudík  
Rádiobudík  
Rádiós ébresztőóra  
Budzik radiowy**

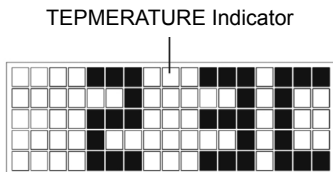
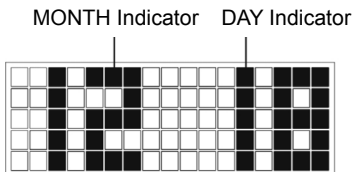
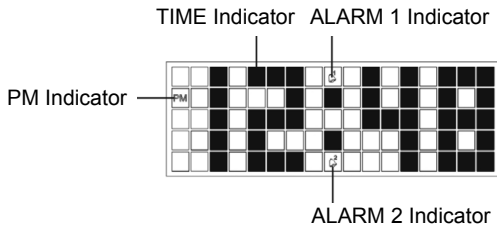
**EN CZ SK HU PL**



# FUNCTION AND CONTROLS

1. ON -OFF / ALARM OFF
2. << / TUNE - / YEAR/MONTH-DAY / TEMPERATURE / C-F / BETWEEN DISPLAY CONTENTS ON-OFF/ SKIP BACK BUTTON
3. >> / TUNE + / SKIP FORWARD / NAP / DST
4. SNOOZE / SLEEP / DIMMER / POWER SAVING
5. TIME SET / MEMORY / MEMORY+
6. ALARM 1 ON - OFF SET / VOLUME DOWN
7. ALARM 2 ON - OFF SET / VOLUME UP
8. ALARM 1 INDICATOR
9. PM INDICATOR
10. TIME INDICATOR
11. ALARM 2 INDICATOR
12. SPEAKER
13. FM ANTENNA
14. TEMPERATURE SENSOR (IN DOOR)
15. BATTERY COMPARTMENT (BOTTOM OF UNIT)
16. AC POWER CORD
17. RATING LABEL

# LED DISPLAY MODE



## GET STARTED

- Select a proper place for the device such as a dry, and even non slip area where you can easily operate the device.
- Inserting the Battery (Backup)

### INSTALLING/REPLACING THE BACK-UP BATTERY

This unit is equipped with a battery back-up system, requiring one DC3V CR2032 lithium battery (not included) to maintain the time/calendar settings and radio presets during AC power outage.

1. Unscrew and remove the BATTERY COMPARTMENT COVER.
2. Install one fresh CR2032 lithium battery into the battery compartment following the polarity diagram on the BATTERY COMPARTMENT COVER. Use only the specified size and type of battery.
3. Replace the BATTERY COMPARTMENT COVER and tighten its screw.

**Note:**

The unit will operate without a battery installed but your time & alarm setting and radio presets will be lost and will have to be reset in the event of power interruption or failure.

**IMPORTANT:**

Be sure that the battery is installed correctly. Wrong polarity may damage the unit and void the warranty. For best performance and longer operating time, we recommend the use of good quality alkaline battery.

## AC POWER CONNECTION

Plug the AC power cord into a household outlet AC source.

## SETTING THE CALENDAR AND TIME

1. In standby mode, press and hold the Time set button (5) for about 2 seconds to enter the calendar/time set mode.
2. The year indicator will flash on the LED DISPLAY for up to 30 seconds prompting for a new entry.
3. While the display is flashing, repeatedly tap the unit buttons (2), (3) to adjust to the correct year. Press and hold the unit (2), (3) button faster scanning backward or forward. Tap the unit button (5) to confirm.
4. Repeat steps #2 to #3 to adjust the month, day, time format, current hour and finally current minute in the same way.

**Notes:**

The display sequence in calendar / time set mode will be as follows:

Year → Month → Date → 12/24 Hour Time Format → Real Time Hour  
→ Real Time Min → Normal Time

To check the year while current time is displayed, tap the unit button (2) once. The LED DISPLAY will change to year display for 5 seconds and then revert to current time automatically.

To check the date while current time is displayed, tap the unit button (2) twice. The LED DISPLAY will change to date display for 5 seconds and then revert to current time automatically.

Make sure the hour is set so that the PM indicator is displayed correctly for afternoon/night times.

## **SWITCHING THE UNIT ON/OFF**

Press the unit on/off button (1) to switch the unit on or off.

## **VOLUME ADJUST**

Press the unit (6) and (7) button to set the desired volume level. The volume level reading will appear in the LED DISPLAY.

## **DIMMER CONTROL**

In radio off mode, press the DIMMER button (4) allows you to set the brightness of the LED display to high, low 2 levels.

1. The clock display with dimmer low is the default setting.
2. It will consume more power if you set the clock display with dimmer higher.

## **TOGGLE TEMPERATURE DISPLAY BETWEEN °C (CELSIUS) AND °F (FAHRENHEIT)**

1. Press the device to standby mode using the unit button (1).
2. Press the unit button (2) to display the temperature.
3. While the temperature is displayed, press the unit button (2) for about 3 seconds to switch between °C and °F.

## **RADIO TUNING**

1. In standby mode, Press the unit on/off button (1) to turn the unit 'On'.
2. The LED DISPLAY will show the radio frequency for about 5 seconds and then revert to normal time display.

## **AUTOMATIC SEARCH FOR RADIO STATIONS**

To automatically search for stations with strong signals, press and hold the main unit button (2) and (3) until the frequency readout on the display

begins to scan. Release the button. The tuner will stop on the first strong station it finds.

## **MANUAL SEARCH FOR RADIO STATIONS**

1. Tap the unit (2) and (3) button repeatedly to choose your desired radio station.
2. Tap the unit (6) and (7) button to set the desired volume level. The volume level reading will appear in the LED DISPLAY.

### **Notes:**

- Use manual tuning to select weaker stations that might be skipped during automatic tuning.
- If the automatic tuning does not stop on the exact frequency of the station, for example, it stops on 88.9 MHz instead of 88.8 MHz, use the manual tuning method to “fine tune” to the exact frequency of the desired station.

## **HINTS FOR BEST RECEPTION**

To insure maximum FM tuner reception, unwrap and fully extend the EXTERNAL FM WIRE ANTENNA for best FM radio reception.

## **TO SET/RECALL RADIO STATION PRESETS**

1. Press the unit button (2) and (3) select the desired radio station.
2. Press and hold the unit button (5) the next available preset memory number will flash on the LED display. (Note: “P01” will flash in the display if you are programming presets for the first time.)
3. Press the unit button (2) and (3) to change to the desired preset number P01 thru P10.
4. Repeat steps 1 through 3 to preset up to 10 FM stations.
5. To recall one of the preset stations already programmed, Press the unit button (5) repeatedly until you reach the desired preset number/radio station.

## **SETTING THE ALARMS (AL1 AND AL2)**

You can select either a Beeper Alarm or the FM Radio as the alarm source. The setting sequence for ALarm is as follows:

### **SETTING THE ALARM 1 (BEEPER)**

Normal Time → AL 1 Hour → AL 1 Min → AL 1 weekday Alarm → AL 1 beeper → Normal Time.

### **SETTING THE ALARM 1 (RADIO)**

Normal Time → AL 1 Hour → AL 1 Minute → AL 1 weekday → AL 1 beeper → AL 1 radio → AL 1 final radio volume → Normal Time.

### **SETTING THE ALARM 2 (BEEPER)**

Normal Time → AL 2 Hour → AL 2 Min → AL 2 weekday Alarm → AL 2 beeper → Normal Time.

### **SETTING THE ALARM 2 (RADIO)**

Normal Time → AL 2 Hour → AL 2 Minute → AL 2 weekday → AL 2 beeper → AL 2 radio → AL 2 final radio volume → Normal Time.

1. In standby mode, tap the AL1 (or AL2) button to show the preset alarm time.
2. Press and hold the AL1 (or AL2) button again for about 2 seconds until the Hour Indicator on the LED DISPLAY flashes. Press the (2) or (3) button to obtain the desired Alarm Hour.
3. Tap the AL1 (or AL2) button again to advance to the Minute Indicator. Press the (2) or (3) button to obtain the desired Alarm Minutes.
4. Tap the AL1 (or AL2) button again to advance to the Weekday Indicator. Press the (2) or (3) button to select the desired Alarm Weekday mode as follows:

1-5: Monday to Friday

1-7: Whole week

6-7: Saturday & Sunday

1-1: One day of week (you need to further select 1 for Monday, 2 for Tuesday and so on)

5. Tap the AL1 (or AL2) button again to advance to select the Alarm source between Beeper or Radio.

#### **Notes:**

- If you want to choose radio as the alarm source, you need to set the radio to your desired radio station in radio mode first.
- After selecting the Radio as the alarm source during alarm setting, you need to select FM radio and the preset alarm volume level



(up to maximum level 15). When the radio is turned 'On' at the preset alarm time, the radio will begin to sound at a low volume and gradually increases to the preset volume level.

Note: it is not possible to adjust the volume level during the radio alarm. If volume adjustment is needed, you must turn 'Off' the radio first, and then turn it 'On' again using the POWER ON/STANDBY button. The alarm will also be stopped immediately.

6. Press the AL1 (or AL2) button to finish setting and exit to normal time display.
7. To disable ALARM 1 (or 2) from automatically sounding on the upcoming days, press and hold the AL1 (or AL2) button for about 2 seconds, the corresponding AL1 (or AL2) INDICATOR will go off.
8. To resume ALARM 1 (or 2) from automatically sounding on the upcoming days, press and hold the AL1 (or AL2) button for about 2 seconds, the corresponding AL1 (or AL2) INDICATOR will turn on and the alarm(s) will sound the following day at the set time.

## TURNING OFF THE ALARM

When the preset alarm time is reached, the AL1 (or AL2) INDICATOR will flash on the LED DISPLAY and the beeper alarm or radio will sound for 30 minutes unless interrupted by pressing SNOOZE. To stop the alarm immediately, tap the corresponding AL1 (or AL2) button or POWER ON/OFF button. The alarm will ring again at the same alarm time on the following day, or when set to go off based on your Alarm settings.

## SNOOZE FUNCTION

When the alarm source is sounding, press the SNOOZE button to suspend the alarm and activate the snooze function. The Alarm will temporarily stop and sound again 9 minutes later but the AL1 (or AL2) indicator will keep flashing.

### Notes:

- This manual snooze operation can be repeated again and again.
- To turn off the snooze function before it ends, tap the corresponding AL1 (or AL2) button or the ON -OFF / ALARM OFF button. The AL1 (or AL2) INDICATOR will stop flashing.

## SLEEP OPERATION

The sleep timer allows you to turn the unit off after a designated time has elapsed.

1. While listening to the radio, tap the SLEEP button and sleep time '90' (minutes) appears in the LED DISPLAY.
2. Repeatedly tap the SLEEP button to select a sleep timer of 90, 60, 30 or 15 minutes. Wait for about 10 seconds after your selection for the unit to confirm the selection, the unit will play for the selected length of time then turn itself 'Off' automatically.
3. To cancel the sleep timer, repeatedly tap the SLEEP button until you see the current time in the LED DISPLAY after last sleep timer option (15 minutes).  
This function can be cancelled with the button (1).
4. To turn the unit 'Off' before the selected sleep time, press and the on / off button at any time.

### Note:

There is no sleep indicator in this unit. To check the remaining sleep time, tap the SLEEP button once.

## NAP ALARM

The nap alarm can be used for e.g. a short "nap". The function only operates in standby.

- Press the unit button (3) to select the time after which the device will beep. Select from 90 to 10 minutes or OFF (off) in steps of 10 minutes.
- After the selected time has elapsed, an increasingly fast beep will sound. Use the unit button (1) to turn off the beep.

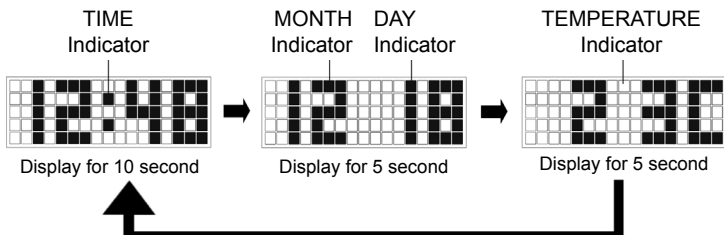
## DAYLIGHT SAVING TIME (DST) MODE

If daylight saving time (DST) is available in the summer time in your State, you may use this option to adjust to the correct time easily.

1. In standby mode, press and hold the unit DST button (3) for 2 seconds to advance the displayed time by one hour.
2. To cancel DST mode, repeat the above operation.

## ALTERNATE DISPLAY BETWEEN TIME AND TEMPERATURE MONTH-DATE DISPLAY

1. In radio off mode, press and hold the unit button (2) for about 3 seconds until "ON" appears in the LED DISPLAY.
2. The DISPLAY will alternate between the current Time for 10 seconds and month- date for 5 seconds and temperature for 5 seconds as follows:



To cancel this function, press and hold the unit button (2) for about 3 seconds until "OFF" appears on the LED DISPLAY. The DISPLAY will switch back to normal time display.

### Note:

If you replace the battery, do not disconnect AC plug from AC outlet. Otherwise, current time and alarm will be initialized.

## RESETTING

If the system does not respond or exhibits erratic or intermittent operation, you may have experienced an electrostatic discharge (ESD) or a power surge that triggered the internal microcontroller to shut down automatically. If this occurs, simply disconnect the ac power cord and remove the system backup battery, wait for at least 3 minutes and then setup the unit again as if it is a brand new unit.

## **WARNING**

1. No naked flame sources, such as lighted candles, should be placed on the apparatus.
2. Do not place the product in closed bookcases or racks without proper ventilation.
3. The mains plug is used as the disconnect device, the disconnect device shall remain readily operable.
4. The ventilation should not be impeded by covering the ventilation openings with items, such as newspapers, table-cloths, curtains, etc.
5. It shall not be exposed to dripping or splashing and that no objects filled with liquids, such as vases, shall be placed on the apparatus.
6. Do not connect FM antenna to outside antenna.
7. The unit should not be exposed to direct sunlight, very high or low temperature, moisture, vibrations or placed in dusty environment.
8. Do not use abrasive, benzene, thinner or other solvents to clean the surface of the unit. To clean, wipe it with mild non-abrasive detergent solution and clean soft cloth.
9. Never attempt to insert wires, pins or other such objects into the vents or opening of the unit.
10. Batteries shall not be exposed to excessive heat such as sunshine, fire or the like.
11. Attention should be drawn to the environmental aspects of battery disposal.
12. Do not dispose this product into usual household garbage at the end of its lifecycle; hand it over to a collection center for recycling the electrical and electronic appliances. By recycling, some of the materials can be reused. You are making an important contribution to protect our environment. Please inquire your community administration for the authorized disposal center.

## **SPECIFICATIONS**

Frequency range:	FM 87.5 – 108 MHz
Temperature Sensor Range:	32 °F to 122 °F (0°C to +50°C)
Battery backup:	3V (CR2032 Flat Lithium battery x 1) (not included)
Power supply :	AC230V 50Hz
Power consumption:	5W
Dimensions:	161 x 72 x 64 mm
Weight:	390 g

# INSTRUCTIONS AND INFORMATION REGARDING THE DISPOSAL OF USED PACKAGING MATERIALS

Dispose of packaging material at a public waste disposal site.

## DISPOSAL OF USED ELECTRICAL AND ELECTRONIC APPLIANCES



The meaning of the symbol on the product, its accessory or packaging indicates that this product shall not be treated as household waste. Please, dispose of this product at your applicable collection point for the recycling of electrical & electronic equipment waste. Alternatively in some states of the European Union or other European states you may return your products to your local retailer when buying an equivalent new product. The correct disposal of this product will help save valuable natural resources and help in preventing the potential negative impact on the environment and human health, which could be caused as a result of improper liquidation of waste. Please ask your local authorities or the nearest waste collection centre for further details. The improper disposal of this type of waste may fall subject to national regulations for fines.

### **For business entities in the European Union**

If you wish to dispose of an electrical or electronic device, request the necessary information from your seller or supplier.

### **Disposal in other countries outside the European Union**

If you wish to dispose of this product, request the necessary information about the correct disposal method from local government departments or from your seller.



This product meets all the basic EU regulation requirements that relate to it.

Changes to the text, design and technical specifications may occur without prior notice and we reserve the right to make these changes.

## EN Warranty conditions

**Warranty card is not a part of the device packaging.**

This product is warranted for the period of 24 months from the date of purchase to the end-user. Warranty is limited to the following conditions. Warranty is referred only to the customer goods using for common domestic use. The claim for service can be applied either at dealer's shop where the product was bought, or at below mentioned authorized service shops. The end-user is obligated to set up a claim immediately when the defects appeared but only till the end of warranty period. The end user is obligated to cooperate to certify the claiming defects. Only completed and clean (according to hygienic standards) product will be accepted. In case of eligible warranty claim the warranty period will be prolonged by the period from the date of claim application till the date of taking over the product by end-user, or the date the end-user is obligated to take it over. To obtain the service under this warranty, end-user is obligated to certify his claim with duly completed following documents: receipt, certificate of warranty, certificate of installation.

### **This warranty is void especially if apply as follows:**

- Defects which were put on sale.
- Wear-out or damage caused by common use.
- The product was damaged by unprofessional or wrong installation, used in contrary to the applicable instruction manual, used in contrary to legal enactment and common process of use or used for another purpose which has been designed for.
- The product was damaged by uncared-for or insufficient maintenance.
- The product was damaged by dirt, accident of force majeure (natural disaster, fire, and flood).
- Defects on functionality caused by low duality of signal, electromagnetic field interference etc.
- The product was mechanically damaged (e.g. broken button, fall).
- Damage caused by use of unsuitable media, fillings, expendable supplies (batteries) or by unsuitable working conditions (e.g. high temperatures, high humidity, quakes).
- Repair, modification or other failure action to the product by unauthorized person.
- End-user did not prove enough his right to claim (time and place of purchase).
- Data on presented documents differs from data on products.
- Cases when the claiming product cannot be indentified according to the presented documents (e.g. the serial number or the warranty seal has been damaged).

### **Authorized service centers**

Visit [www.sencor.eu](http://www.sencor.eu) for detailed information about authorized service centers.