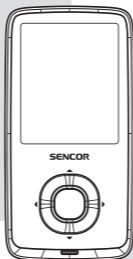


SENCOR®

SFP 6260



USER'S MANUAL

SLIM MP3/MP4 PLAYER

NÁVOD K POUŽITÍ

SLIM MP3/MP4 PŘEHRÁVAČ

NÁVOD NA POUŽITIE

SLIM MP3/MP4 PREHRÁVAČ

HASZNÁLATI ÚTMUTATÓ

SLIM MP3/MP4 LEJÁTSZÓ

INSTRUKCJA OBSŁUGI

SLIM ODTWARZACZ MP3/MP4

EN

CZ

SK

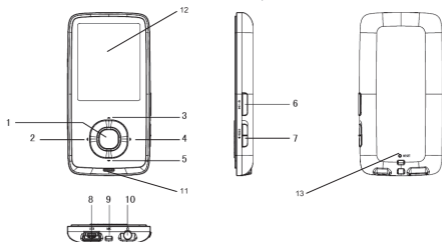
HU

PL

1. Key features

- 1.8 inch (4,6 cm) TFT screen
- Support MP3, WMA formats audio
- Support MPEG-4 (AVI) format video
- Support FM Radio
- Lyric display synchronously
- Multi EQ modes and repeat modes
- Support JPG format picture view
- Built-in microphone for long time recording
- Support txt E-book reading
- Multi-Languages OSD menu
- Video playing time: 6 hours
- Audio playing time: 16 hours
- Dimensions: 78 x 39 x 8 mm
- Weight: 28 g

2. Player Layout



1. Menu / OK
2. last / fast backward
3. volume +
4. next / fast forward
5. volume -
6. Power on/off & play/pause
7. lock button
8. usb port
9. neckstrap
10. earphone port
11. microphone
12. display
13. reset

3. Operation instruction

- **Power On/Off**

In the status of power off, long press ►|| \ ⏻ button to turn on the player;

In the status of power on, long press ►|| \ ⏻ button to turn off the player.

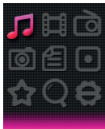
- **Lock/Hold:**

Push HOLD► to arrow direction to lock the player, push inversely to unlock the player.

- **Basic Operation**

In main menu interface, press ◀ / ▶ or ▲ / ▼ to select option, press **Menu / OK** button to enter. Long press **Menu / OK** button to get back to main menu interface.

3.1 Music



In Main interface, press ◀ / ▶ or ▲ / ▼ to select **Music** menu, then press **Menu / OK** button to enter music play interface.

Play / Pause: short press ►|| \ ⏻ to play or pause the music playing.

Last / next: short press ◀ or ▶ to get to last music or next music.

Fast backward / Fast forward: long press ◀ or ▶ to fast backwards or forwards the music.

Volume: short press ▲ / ▼ to adjust volume up or down.

A-B repeat: long press ▲ button to set repeat start point A, long press again to set repeat end point B. Then player will repeat the segment. The third time long press will cancel A-B repeat and resume normal playback.

Lyric show: To show the lyric, the lyric file (eg. Abcde.lrc) should be in same name as music file (eg. Abcde.mp3) and both files should be in the same folder.

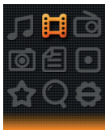
Music file list: in playback interface, short press **Menu / OK** button to get to folder/file list. Press **▲ / ▼** to select music file, press **Menu / OK** button to play it.

Set EQ: please get to **Settings > Music** to set EQ. (reference to 3.8.1)

Set Play/Repeat mode: please get to **Settings > Music** to set Play mode. (reference to 3.8.1)

Remark: the player support audio formats of .mp3, .wma, .wav.

3.2 Video



In Main interface, press **◀ / ▶** or **▲ / ▼** to select **Video** menu, then press **Menu / OK** button to enter video file list. Press **▲ / ▼** to select video file, press **Menu / OK** button to enter video playback interface.

Play / Pause: short press **▶|| \ ⏻** to play or pause the video playing.

Last / next: short press **◀** or **▶** to get last or next video.

Fast backward / Fast forward: long press **◀** or **▶** to fast backwards or forwards the video.

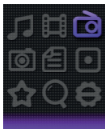
Volume: press **▲ / ▼** to adjust volume up or down.

Video file list: in playback interface, press **MENU** button to get to folder/file list. Press **▲ / ▼** to select video file, press **Menu / OK** button to play it.

Remark: the player support video formats of .avi. Resolution should be 160x128. Please use video converting tool in gift CD

to convert the video to which this player support (reference to point 5).

3.3 FM Radio



In Main interface, press ◀ / ▶ or ▲ / ▼ to select **FM Radio** menu, then press **Menu / OK** to enter FM radio interface.

Manual Scan: press **Menu / OK** button to show options, press ▲ / ▼ to select **Manual** then press **Menu / OK** button. Short press ◀ or ▶ to select frequency manually. Long press ◀ or ▶ player will auto scan and stop till it find channel.

Auto Scan: press **Menu / OK** button to show options, press ▲ / ▼ to select **Auto** then press **Menu / OK** button. Then the player will scan channels and set the found channels to Preset one by one. After auto scan, it'll get to the first preset channel. Press ◀ or ▶ to get to preset channels one by one.

Save Channel: press **Menu / OK** button to show options, short press ▲ / ▼ to select **Memory** then press **Menu / OK** button. Then press ▲ / ▼ to select position to save. Press ▶|| \ ⏻ will pop a warning, select **Yes** and press **Menu / OK** button to confirm saving channel, or select **No** and press **Menu / OK** button to cancel saving channel.

Preset: press **Menu / OK** button to show options, short press ▲ / ▼ to select **Preset** then press **Menu / OK** button. Press ◀ / ▶ to get to preset channel one by one.

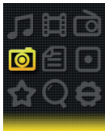
Delete Channel: press **Menu / OK** button to show options, short press ▲ / ▼ to select **Delete** then press **Menu / OK** button. Then press ▲ / ▼ to select to be deleted channel. Press ▶|| \ ⏻ will pop up a warning, select **Yes** and press **Menu / OK**

button to confirm deleting channel, or select **No** and press **Menu / OK** button to cancel deleting channel.

Volume: press ▲ / ▼ to adjust volume up or down.

Remark: Earphone should connect to player as an antenna. Otherwise the player can not receive channels.

3.4 Photo



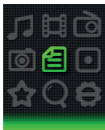
In Main interface, press ◀ / ▶ or ▲ / ▼ to select **Photo** menu, then press **Menu / OK** button to enter picture list. Press ▲ / ▼ to select picture file, press **Menu / OK** button to view the picture.

Last / next: short press ◀ or ▶ to display last or next picture.

Auto Browse: short press ▶|| \ ⏻ the play will display pictures one by one automatically. (Auto Browse setting reference to point 3.8.5)

Photo file list: in photo display interface, press **Menu / OK** button to get to folder/file list. Press ▲ / ▼ to select photo file, press **Menu / OK** button to display it.

3.5 Text



In Main interface, press ◀ / ▶ or ▲ / ▼ to select **Text** menu, then press **Menu / OK** button to enter E-book file list. Press

▲ / ▼ to select E-book file, press **Menu / OK** button to view the text.

Manual Browse: short press ▲ / ▼ to browse up or down page by page.

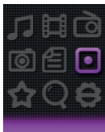
Auto Browse: short press ►|| \ ⏻ to browse page by page automatically. (Auto Browse setting reference to point 3.8.3).

Save Bookmark: long press ◀ will pop up Save Bookmark message, press ▲ / ▼ to select save position, press **Menu / OK** button to save.

Load Bookmark: short press ► will pop up Load Bookmark message, press ▲ / ▼ to select bookmark, press **OK** button to load.

Text file list: in text browse interface, press **Menu / OK** button to get to folder/file list. Press ▲ / ▼ to select text file, press **Menu / OK** button to browse it.

3.6 Record



In Main interface, press ◀ / ▶ or ▲ / ▼ to select **Record** menu, then press **Menu / OK** button to enter recording interface.

Record / Pause: short press ►|| \ ⏻ to record or pause.

Stop: long press **Menu / OK** to save file and get to main interface, or long press ►|| \ ⏻ button to save file and turn off the player. File of recorded voice are saved in folder of VOICE.

3.7 Game



In Main interface, press ◀ / ▶ or ▲ / ▼ to select **Game** menu, then press **Menu / OK** button to enter game interface.

Key function:

▶|| \ ⏻: play or pause

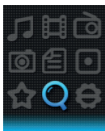
▲: Change cube direction

◀ / ▶: move cube left or right

▼: draw cube down a little faster.

Menu / OK: fast fall down the cube.

3.8 Navigation

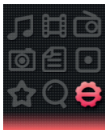


In Main interface, press ◀ / ▶ or ▲ / ▼ to select **Navigation** menu, then press **Menu / OK** button to list folders/files in memory.

Play / Open file: press ▲ / ▼ to select file/folder, press **Menu / OK** button to play or open it. If the file is not supported by this player, it can not play or open.

Delete file: in file list, press ▲ / ▼ to select file then press ▶, there will be a warning, select **Yes** to delete file, or select **No** to cancel deleting.

3.9 Settings



In Main interface, press ◀ / ▶ or ▲ / ▼ to select **Settings** menu, then press **Menu / OK** button to enter setting options. (In submenu, press ◀ to get to upper menu.)

3.9.1 Music:

- **Repeat mode**

Once: play one music one time.

Repeat one: repeat current music again and again.

Folder once: play all music in current folder one time.

Folder repeat: repeat all music in current folder.

All once: play all the music in memory one time.

All repeat: repeat all the music in memory.

Intro: play the first 10 seconds of each music.

- **Play mode**

Order: play music in order.

Shuffle: play music in random.

- **EQ Select**

Normal, MS PlayFX, Rock, Pop, Classic, Bass, Jazz, User EQ

- **MS PlayFX Set**

3D HeadPhone, Pure Bass

- **User EQ Set**

Set EQ by user. Press ◀ / ▶ to select, press ▲ / ▼ to adjust the frequency, press **Menu / OK** button to confirm and get back.

3.9.2 Record:

- **Record Quality**

Set high or normal record quality.

- **Record Volume**

Set record volume level.

3.9.3 Text:

- **Auto play SW:**

Turn on or off for text auto page.

- **Auto play time:**

Set gap time for text auto page.

3.9.4 FM Radio:

- **Stereo SW**

Set FM stereo on or off.

- **FM Region**

Set FM receiving region. Four options: China, Europe, Japan, USA.

3.9.5 Photo:

- **Auto play SW:**

Turn on or off for photo auto scroll.

- **Auto play time:**

Set gap time for photo auto scroll.

3.9.6 Display:

- **Backlight Time**

Set the time if no operation on play, the backlight will turn off.

- **Lum / Brightness**

Set the display brightness level.

- **Backlight Mode**

Normal: screen will be semi dark when time's up;

Power Save: screen will be all dark when time's up.

3.9.7 Power Off Time:

Set auto power off time.

3.9.8 Language:

Set player menu language.

3.9.9 System:

- **About**

View the player information of firmware version, date and memory status.

- **Upgrade**

Upgrade firmware setting. (Reference to point 4)

- **Default Set**

Set the system to original.

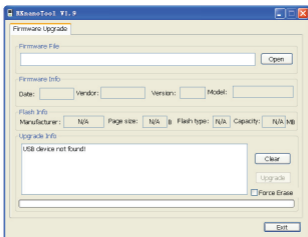
3.9.10 Exit: to exit settings.

4. Firmware upgrade

If the player doesn't work or works sub normally, find the firmware upgrade tool and firmware in gift CD to upgrade the player. Processes as bellow:

Note before updating: a. Don't upgrade firmware if playing properly. b. Backup files to other storage before upgrade.

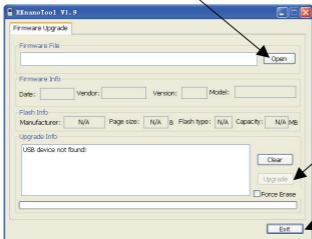
A. Find the software file RKnanoTool.exe from folder of Upgrade Tool in gift CD. Click it to show below dialog box:



B. Set the player to Settings>System>Upgrade, click it show warning of Firmware upgrade; select Yes and then connect the player to PC using USB cable. (In case if player can't turn on, hold **Menu / OK** button and connect player to PC using USB cable at the same time, till PC find the player storage.). If connect successful, the dialog box will show "UsbBoot download successfully!" and show flash information, then do as below point c. If connection failed, the dialog box will show "USB device not found!", then connect again.

C. After connecting successfully, do as below

1) Select firmware. (firmware file is in gift CD, named with extension .BIN).



2) Click Update.

3) Till it finish, click Exit

D. Disconnect the player from PC, start the player again. The player will work properly.

5. Video Convert

The player support video of AVI format in resolution of 128x128. Please use the software in gift CD to convert the video. The AVIConverter supports multi kind of video formats (AVI, RM, RMVB, MPG, MPG4, ASF, DAT, WMV, etc) convert to AVI format.

5.1 AVI Converter Tool Setup

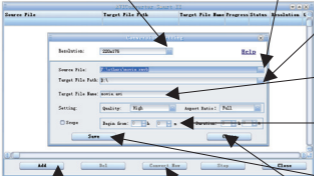
Click software Nano_Video_convert.exe in gift CD; then follow the steps to setup the AVI Converter tool to PC.

5.2 Convert Video to AVI format

From PC>Program to run AVIConverter as below picture and steps for converting:

2) Select Resolution:
160x128

3) Select original
input video



The screenshot shows the AVI Converter software window. It has a title bar and a menu bar. The main area contains several input fields and buttons. Callouts with arrows point to specific elements: 1) 'Add' button at the bottom left; 2) 'Resolution' dropdown menu set to '160x128'; 3) 'Source File' text box containing a file path; 4) 'Target File Path' text box; 5) 'Target File Name' text box containing 'video.avi'; 6) 'Setting' section with 'Quality: High', 'Aspect Ratio: PAL', and 'Segment' options; 7) 'Save' button; 8) 'Close' button at the bottom right; 9) 'Convert Now' button at the bottom center.

4) Select saving Location

5) Input target file name

6) Select quality, ratio and segment.

7) Click save

8) Click close

1) Click Add

9) Click Convert

After converting, copy the converted video file to the player, then enjoy it through player.

6. Accessories:

Earphone 1 piece; USB cable 1 piece; drive CD 1 piece; user manual 1 piece.

INSTRUCTIONS AND INFORMATION REGARDING THE DISPOSAL OF USED PACKAGING MATERIALS

Dispose of packaging material at a public waste disposal site.

DISPOSAL OF USED ELECTRICAL AND ELECTRONIC APPLIANCES



The meaning of the symbol on the product, its accessory or packaging indicates that this product shall not be treated as household waste. Please, dispose of this product at your applicable collection point for the recycling of electrical & electronic equipment waste. Alternatively in some states of the European Union or other European states you may return your products to your local retailer when buying an equivalent new product. The correct disposal of this product will help save valuable natural resources and help in preventing the potential negative impact on the environment and human health, which could be caused as a result of improper liquidation of waste. Please ask your local authorities or the nearest waste collection centre for further details. The improper disposal of this type of waste may fall subject to national regulations for fines.

For business entities in the European Union

If you wish to dispose of an electrical or electronic device, request the necessary information from your seller or supplier.

Disposal in other countries outside the European Union

If you wish to dispose of this product, request the necessary information about the correct disposal method from local government departments or from your seller.



This product meets all the basic EU regulation requirements that relate to it.

Changes to the text, design and technical specifications may occur without prior notice and we reserve the right to make these changes.