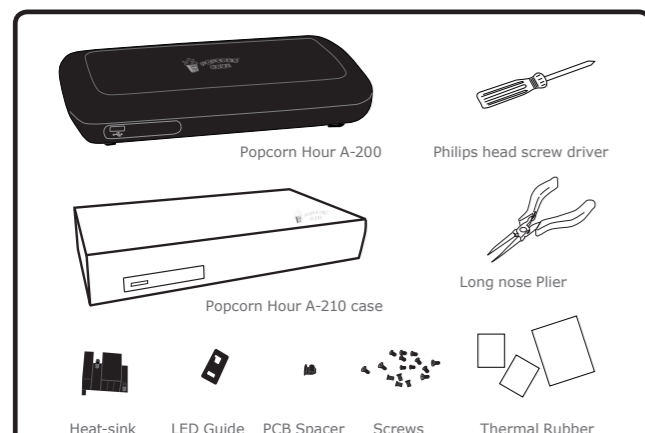


Steps Installation

Installation Guide for Popcorn Hour A-210 aluminum case

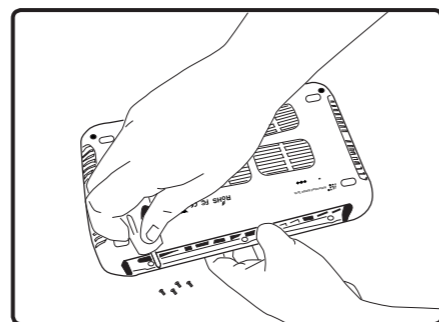


What you need:

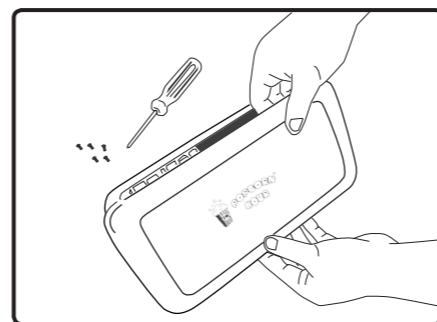
1. Popcorn Hour A-200
2. Popcorn Hour A-210 case
3. Philips head screw driver
4. Long nose Plier

Found in contents of A-210 case upgrade kit

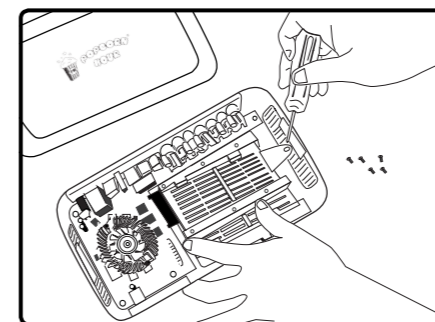
1. Heat-sink
2. Thermal Rubber 50x50x2.6mm
3. Thermal Rubber 27x27x2.8mm
4. Thermal Rubber 27x27x1.6mm
5. LED Guide
6. PCB Spacer
7. Screws for LED Guide
8. Screws for PCB Spacer
9. Screws for heat-sink



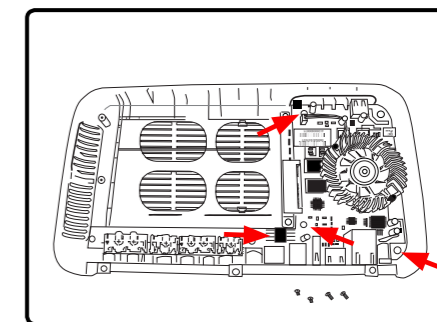
Step 1
Flip the A-200 over to show its underside. Remove the 2 screws located at the front of the device near the rubber pads, then remove the 3 screws located at the back of the device at the protruding ledge.



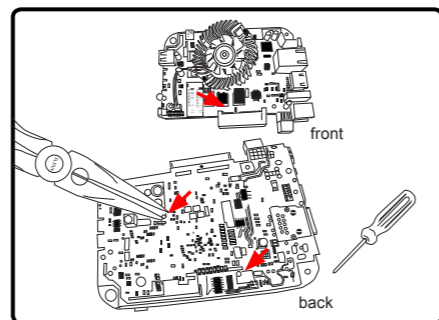
Step 2
Turn the A-200 so that the top logo is facing you. Grasp the lid at the back of the device and gently lift it towards you. The lid will come free with a loud click. Set the lid aside.



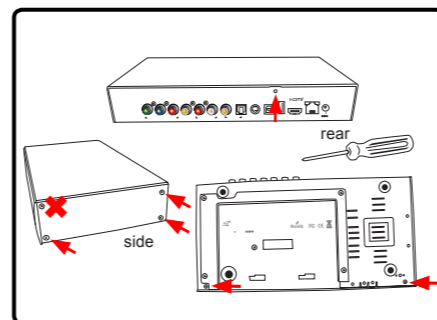
Step 3
Inside the A-200, remove the screw on the right of the plastic HDD tray. Gently slide the tray to the right to remove it.



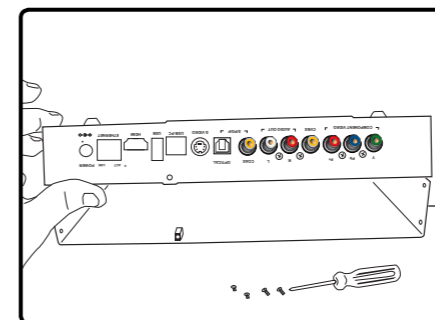
Step 4
Remove the PCB from A-200 case.
1. Unscrew 3 screws holding the PCBA to the case.
2. Lift up the PCBA but be careful of the connector connecting the extension board.



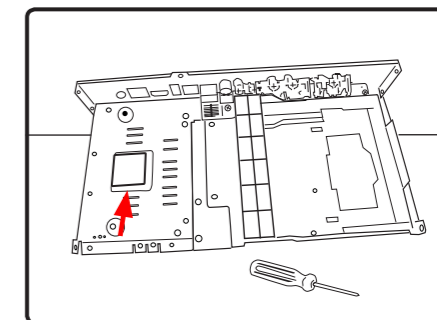
Step 5
Remove fan from PCBA.
1. Disconnect the fan power pin.
2. Flip the PCBA and locate 2 pin as shown, use a plier to squeeze the pin out carefully.
3. The fan should pop out now, you may place the fan aside.



Step 6
Preparing the A-210 upgrade kit.
1. Remove 3 screws from both sides of the A-210 case as shown. DO NOT remove the 4th screw, crossed out in the diagram.
2. Remove 1 screw from the back panel.
3. Flip the case and remove 2 screws from side.



Step 7
Remove the top cover of A-210 case.
1. With all the required screws removed, lift up the bottom piece carefully.



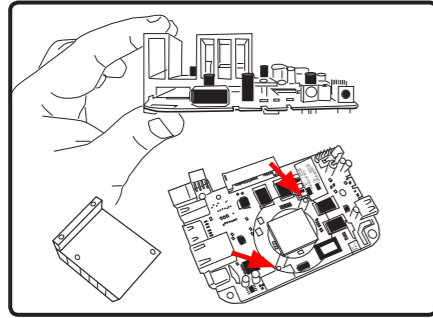
Step 8
Applying thermal rubber to case.
(require Thermal Rubber 27x27x1.6mm packet)
1. Remove thermal rubber from packet, peel off protective transparent seal from both side.
2. Apply it to the case as shown above.

25.5 cm (H)

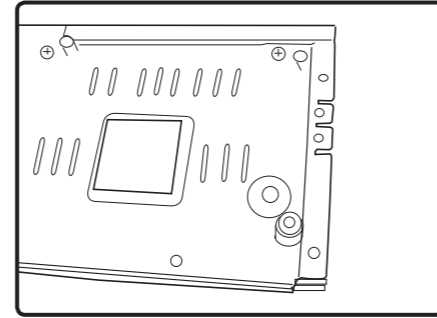
38 cm (W)



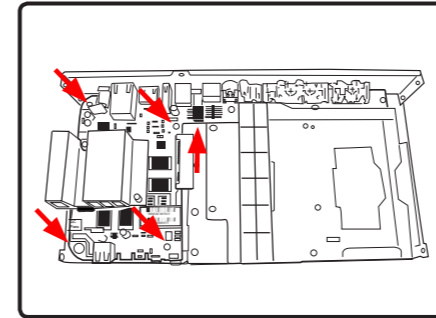
A-210 Upgrade Kit Hard Disk Installation Guide



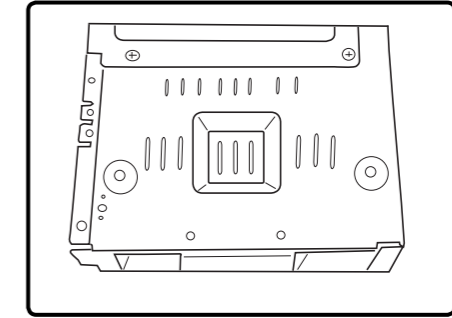
- Step 9**
Installing heat-sink to PCBA.
(require thermal rubber 27x27x2.8mm and heat-sink)
1. Remove thermal rubber from packet, peel off protective seal.
 2. Paste thermal rubber on CPU as shown.
 3. Align heat-sink pin to the pin hole on PCBA, and snap it in.
 4. Ensure that the heat-sink is snapped in, and properly align for maximum heat-dissipation.



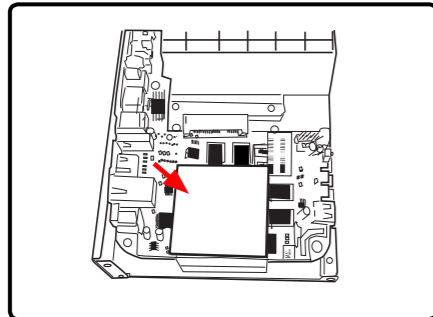
- Step 10**
PCB Spacer installation.
(require PCB spacer packet and PCB spacer screws packet)
1. Remove spacer from PCB Spacer packet, and insert into the case by using the 2 guiding pin.
 2. Take a screw from LED Guide & PCB Spacer packet.
 3. Flip the case over and secure the spacer using screw.



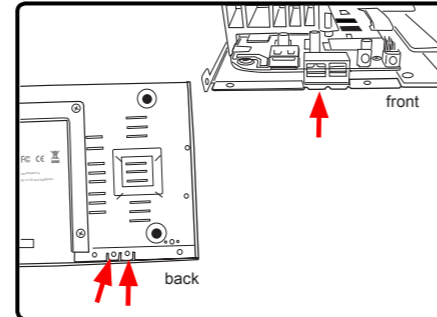
- Step 11**
Installing the PCBA to case
(required PCB spacer screw and PCBA screw)
1. Align the PCBA to the extension board pin as above carefully, slot it in making sure that it is tight.
 2. The PCBA ports should align with the back panel.
 3. Once align, use the screws from Screw for 2.5" HDD & PCBA packet and Screw for PCB Spacer packet.
 4. Secure all 4 screw hole location with the appropriate screw size.



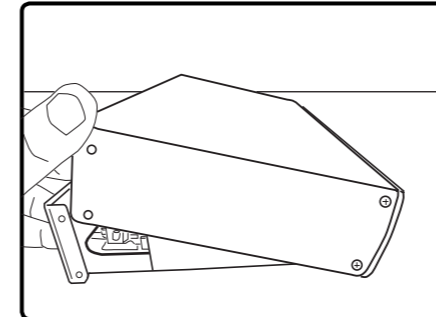
- Step 12**
Secure heat-sink with screws from screw from heat-sink packet.



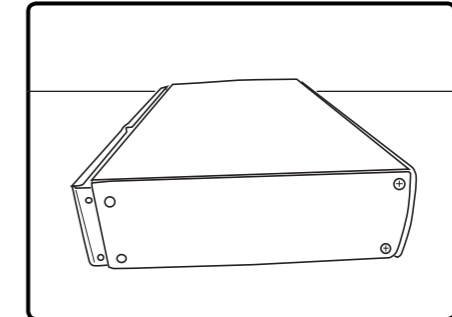
- Step 13**
Paste thermal rubber from thermal rubber 50x50x2.6mm packet on top of heat-sink.



- Step 14**
Installing LED Guide from LED guide packet and 2 screws from LED Guide & PCB spacer packet.
1. Align LED guide as shown to the PCBA, flip over the case and secure 2 screws.



- Step 15**
Closing the A-210 case.
1. Place the top case as shown above, ensure that the bottom case is cover completely by the top case before closing.



- Step 16**
Completing the installation
1. Slide the top case to close it.
 2. Complete installation by assembling the case together.

25.5 cm (H)

38 cm (W)