

20TK8R

MLSSA SPD 4W Rev 6 #000829-1613-1650 for Davis Acoustics

Measured Parameters		QC Limits	
Line	Parameter	Value	Units
1	RMSE-free	1.13	Ohms
2	Fs	40.67	Hz
3	Re	7.15	Ohms[dc]
4	Res	137.05	Ohms
5	Qms	8.93	
6	Qes	0.47	
7	Qts	0.44	
8	L1	-0.06	mH
9	L2	0.80	mH
10	R2	4.06	Ohms
11	RMSE-load	1.09	Ohms
12	Vas(Sd)	56.07	liters
13	Mms	17.40	grams
14	Cms	880	$\mu\text{M}/\text{Newton}$
15	B1	8.26	Tesla-M
16	SPLref(Sd)	90.9	dB[Re]
17	Rub-index	0.08	

Method: Mass-loaded (25.000 grams)

Area (Sd): 213.00 sq cm

DCR mode: Measure (-0.14 ohms)

QC file: CLOSED

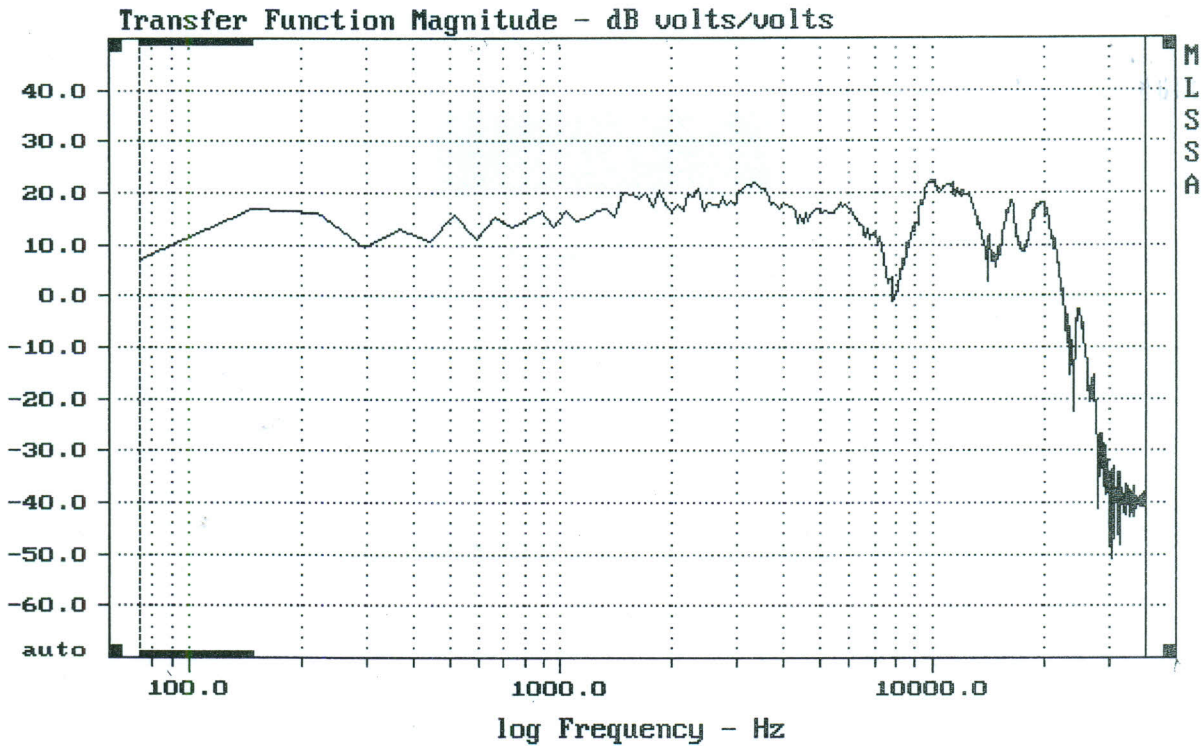
Analysis successful. Shift in Fs = -36.5% (-20% to -50% is recommended).

LIB PARAMETERS: Go Calc Method DCR-mode Area Synth QC Export Z-ref Print dUmp

F1 for Help or ESC to exit

MLSSA: Parameters

20TK8R

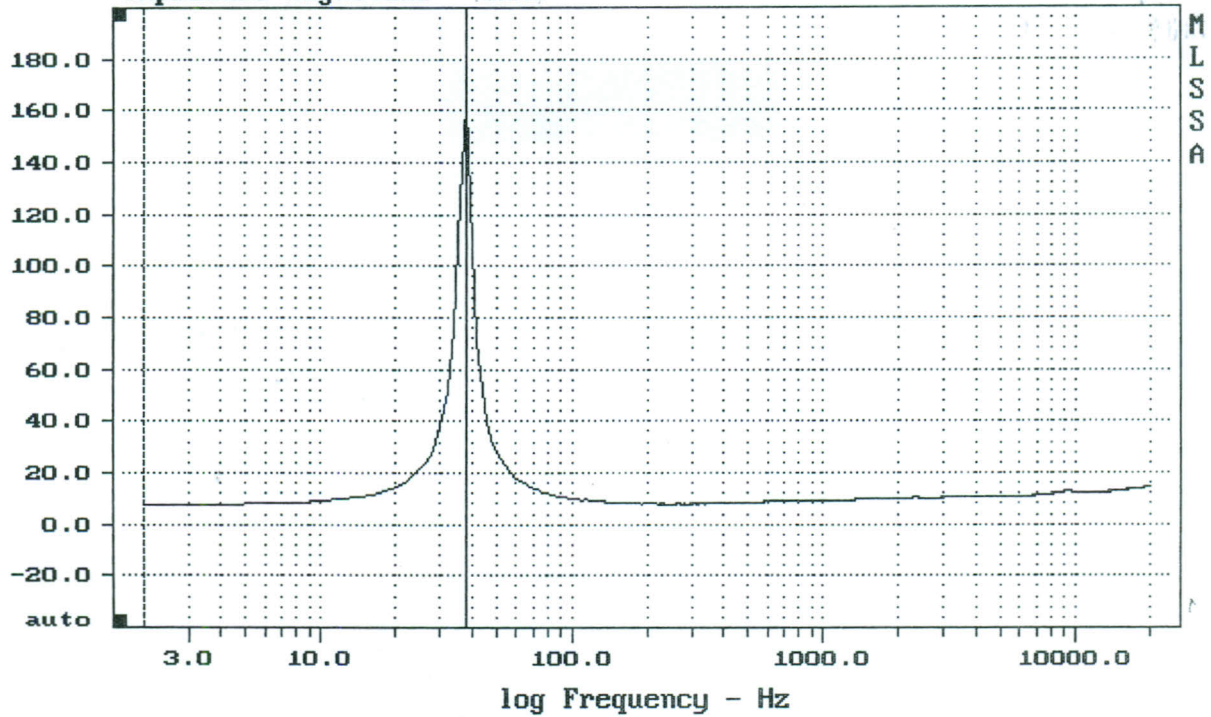


CURSOR: y = -41.2789 x = 37735.8475 (512)

FREQUENCY DOMAIN MENU: Go View Reference Acquisition Setup Transfer Macro QC
 Overlay Calculate Printer DOS Units Library Info Exit
 F1 for Help MLSSA: Frequency Domain

20 TK8R

File: C:\MLS\20TK8RI.FRQ 1-6-2011 3:26 PM (equalized)
Impedance Magnitude - ohms



CURSOR: y = 162.773 x = 38.0219 (19)

FREQUENCY DOMAIN MENU: Go View Reference Acquisition Setup Transfer Macro QC
Overlay Calculate Printer DOS Units Library Info Exit
F1 for Help MLSSA: Frequency Domain