



BENQ Digital Camera 300mini Electronic User's Manual

What's in the Package 1

Introduction to Benq Digital Camera 300mini 2

Touring Your Camera 3

Getting Started 6

Installing Battery 6

Installing Neck Strap 7

Installing Digital Camera Software 8

Using the Camera 10

Taking Pictures 10

Other Modes of Operation 12

Managing Pictures in Camera 17

Service Information 38

Technical support 38



Copyright

Copyright (c) 2001 by Benq Corporation. All rights reserved. No part of this publication may be reproduced, transmitted, transcribed, stored in a retrieval system or translated into any language or computer language, in any form or by any means, electronic, mechanical, magnetic, optical, chemical, manual or otherwise, without prior written permission from Benq Corporation.

Brands and product names are trademarks or registered trademarks of their respective companies.

Disclaimer

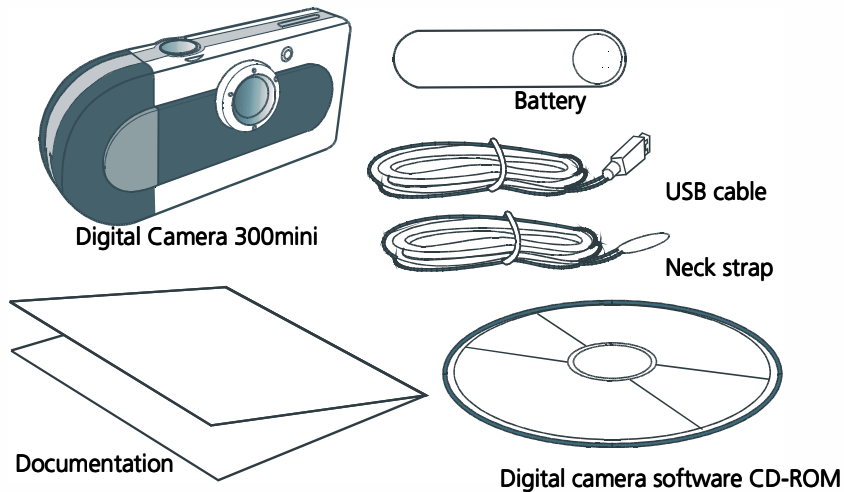
Benq Corporation makes no warranty of any kind with regard to this material, including, but not limited to, the implied warranties of merchantability and fitness for a particular purpose. Benq Corporation assumes no responsibility for any error that may appear in this document. Benq Corporation makes no commitment to update nor to keep current the information contained in this document.

Taking care of your camera

- Do not use your camera over the following environmental range: temperature: 0 °C to 40 °C, relative humidity: 45% ~ 85%.
- Do not use or store your camera in environments listed below:
 - Direct sunlight
 - High humidity and dusty places.
 - Next to the air conditioner, electric heater or the other heat sources.
 - In a closed car that is directly under the sun.
 - Avoid shaky places.
- If your camera becomes wet, wipe it with dry cloth as soon as possible.
- Salt of seawater may cause severe camera damage.
- Do not use organic solvents, such as alcohol, etc., to clean your camera.
- If the lens or viewfinder is dirty, please use the lens brush or soft cloth to clean the lens. Do not touch the lens with your fingers.
- To prevent electrical shock, do not attempt to disassemble or repair your camera by yourself.
- Water may cause a fire or electric shock. Therefore, please store your camera in a dry place.
- Do not use your camera outdoors when it is raining or snowing.
- Do not use your camera in the water.
- If the foreign substance or water gets in your camera, please turn the power off immediately and remove the battery. Remove the foreign substance or water, and send it to the maintenance center.
- Transfer the data to the computer as soon as possible to avoid losing your image data.

What's in the Package

Make sure all the following items are in the package:



If you find any item missing or damaged, please contact your dealer immediately.



Introduction to Benq Digital Camera 300mini

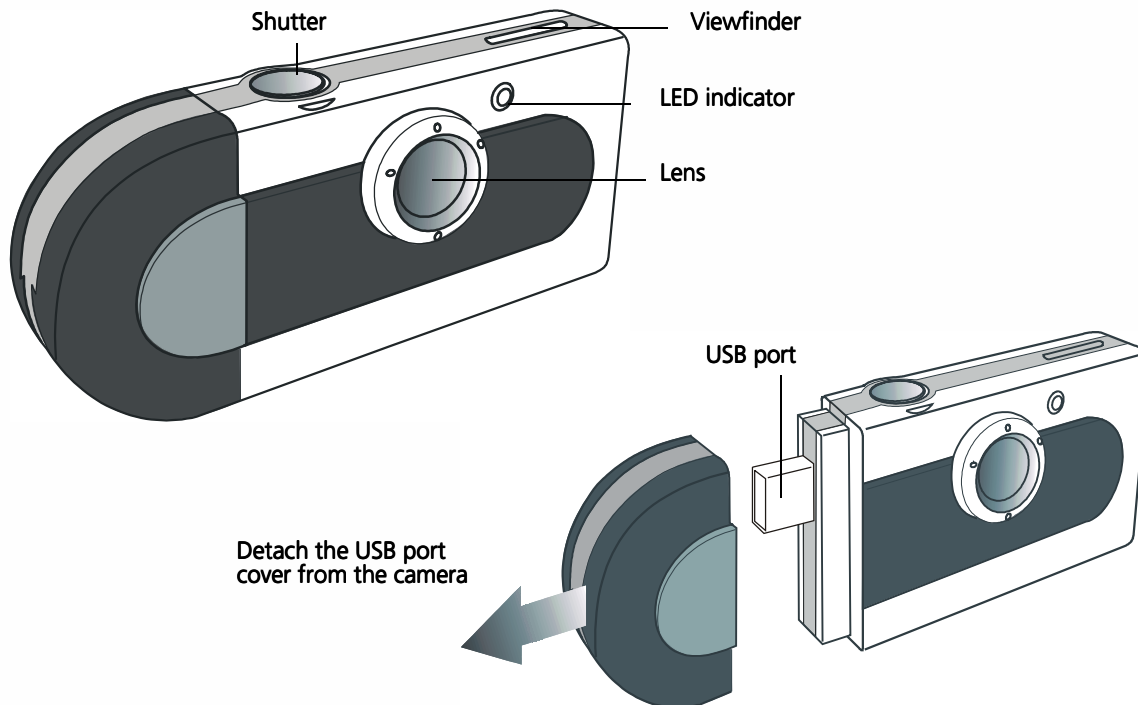
Benq Digital Camera 300mini has the following features:

- Compact and lightweight
The compact size (85 x 40 x 19.8mm) and lightweight (40g without battery) allows you to take your Digital Camera 300mini everywhere.
- Easy to operate
Fixed focus with only two-button (mode select and shutter) operation
- Three picture taking modes
Continuous shooting mode (26 or 107 shots maximum)
Self-timer mode (10 seconds delay)
VGA (26 shots) QVGA (107 shots) image recording mode (640x480 & 320x240 pixels respectively)
- AVI Image Conversion
Easily transfer "Still images" into "Moving/Motion pictures" using the AVI (Audio Video Inter-lead) format application.
- Instant image frames erasure
All images can be cleared instantly to start a new picture taking session.
- Low power consumption with auto energy-save mode
New batteries can take up to 1000 shots. Camera automatically enters into "sleep" (energy-saving) mode when it remains inactive for 30 seconds.
- Supports USB interface for PC system
With USB, download of images to your PC is accomplished at higher speed.

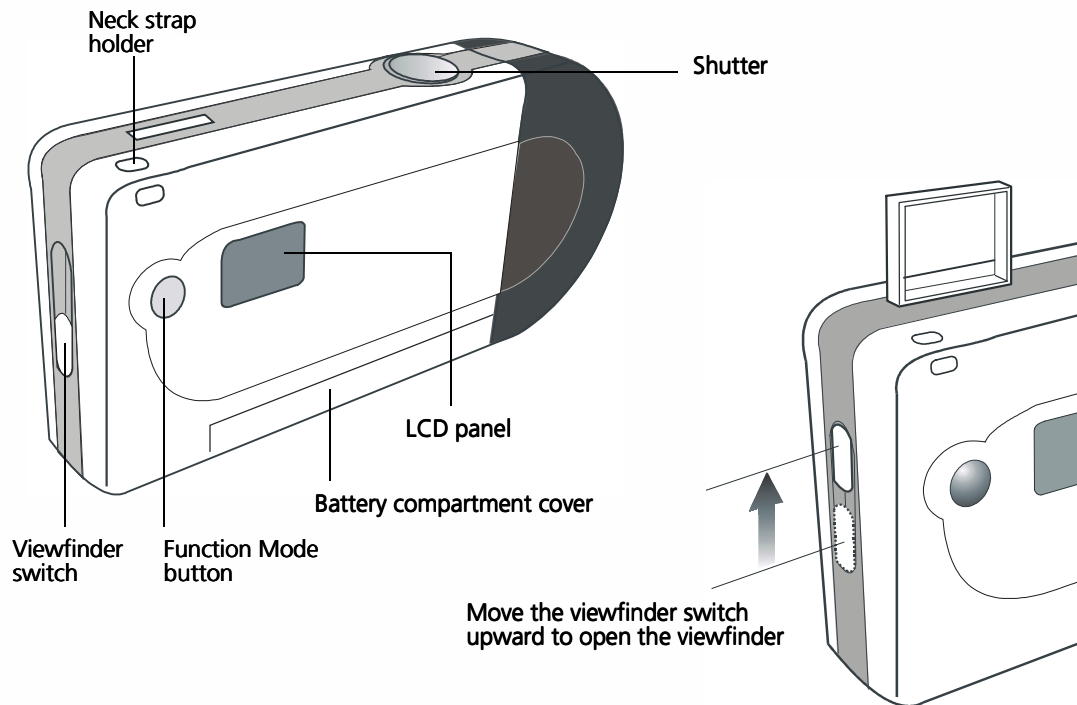


Touring Your Camera

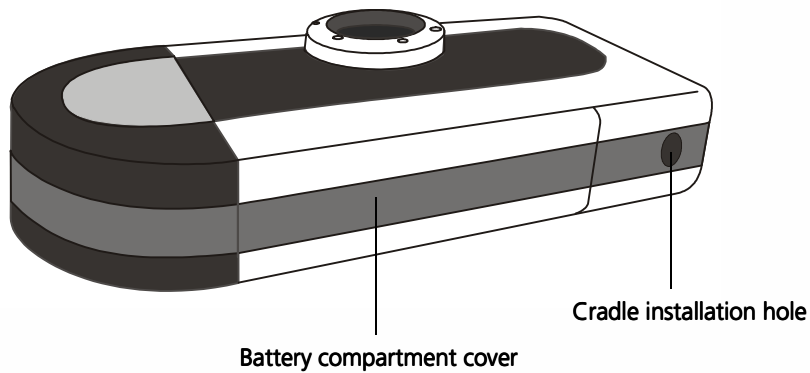
Front View



Rear View

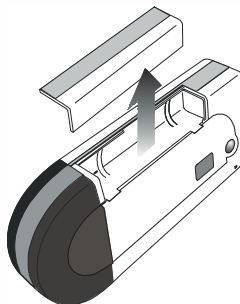


Bottom View

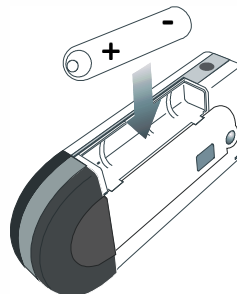


Getting Started

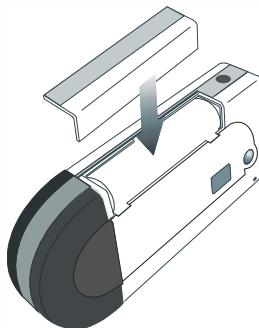
Installing Battery



1 Open the battery compartment cover.



2 Insert the battery into the battery compartment.
Make sure that the polarities are correctly oriented as illustrated.

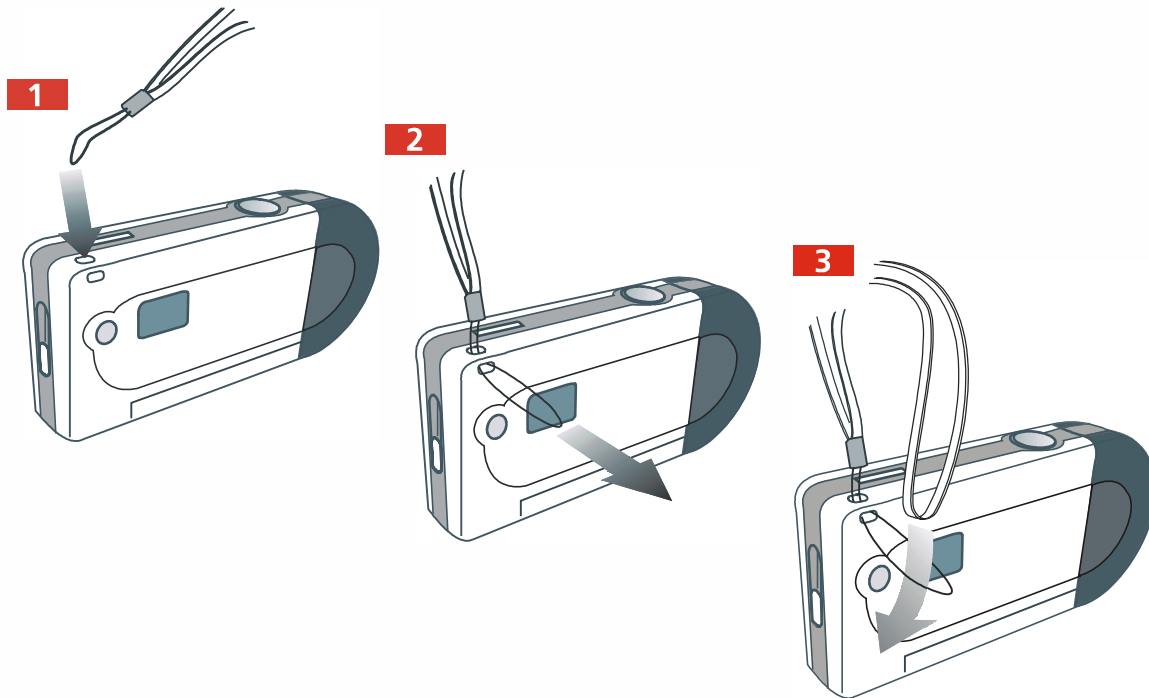


3 Close the battery compartment cover.

WARNING!

When the LCD Panel display starts to blink, it indicates that the battery power is low. Stop taking pictures and transfer the images data to your PC within a week before the batteries completely lose its power. Otherwise, all the images will be erased.

Installing Neck Strap



Installing Digital Camera Software

The CD that accompanies your camera contains the digital camera driver bundled with valuable image-editing software.

To install digital camera software:

- 1** Insert the utility CD into the CD-ROM drive. The software installation menu will appear automatically.

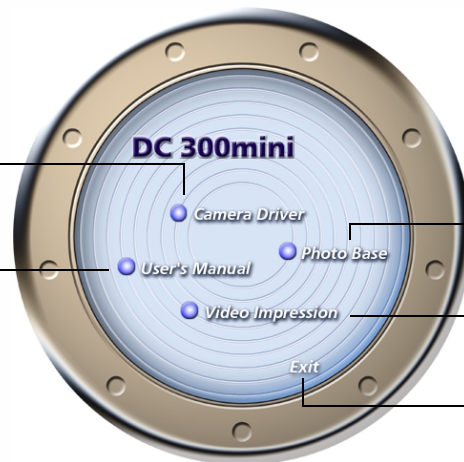


If the software installation menu does not automatically display, click Start button, then click Run from Windows Start menu, and execute the file cdsetup.exe from the CD.

- 2** Click "Camera Driver" on the menu. Follow the on-line instructions to complete the driver installation.

Click to install digital camera driver

Click to browse user's manual



Click to install Photo Base

Click to install Video Impression

Click to close the menu and exit



You may be prompted to restart the computer at this point. Do not restart your computer until all the software has been installed.

- 3 Click on other items on the menu to install the bundled application software.

Software	Description
Videolmpression	With Videolmpression you can edit and combine your video files. New videos can be created using existing video, animation, and image files. Quickly and easily create desktop video presentations for use at home, business or on the internet.
PhotoBase	You can use this application program to easily manage your pictures.

- 3 A desktop shortcut of the program is automatically created after successful installation. Restart your computer when you have finished installing all of the above software.



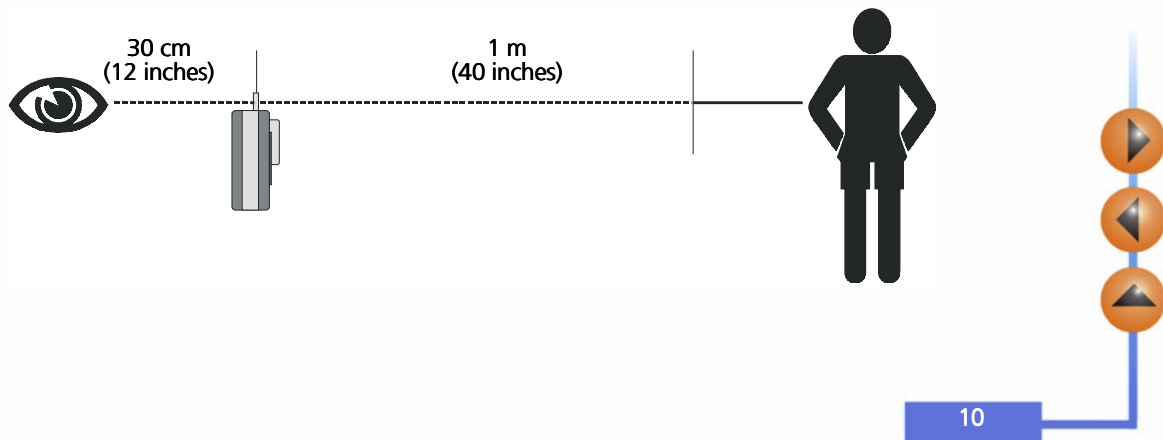
Using the Camera

Taking Pictures

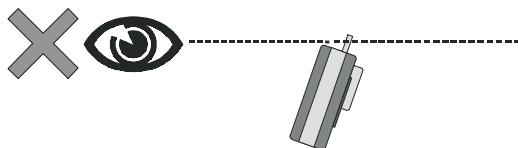


The camera is designed without a power switch. It uses energy-saving or "sleep" mode to control its power. The power will be turned OFF when the camera is not used for 30 seconds. If the camera is off, press the Function Mode button to turn the camera back on.

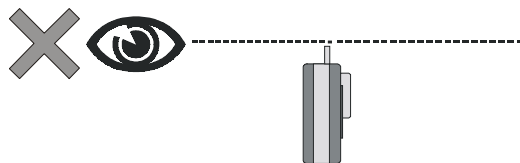
- 1 Hold the camera and look through the viewfinder and set up your picture. When looking through the view finder, keep it approximately 30 cm from your eye. Adjust size of your composition by increasing or decreasing distance between camera and subject but not nearer than 1 meter.



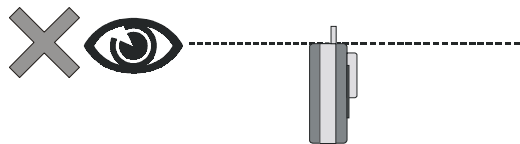
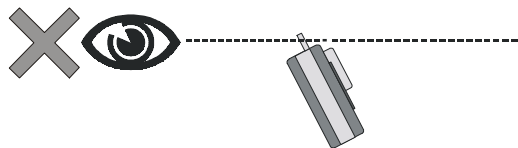
Wrong ways to use the viewfinder



The camera is not upright



The viewfinder is too high or too low



2

Press the Shutter button to take a picture of your subject. The LED indicator will be on and a short beep sound emits at each click of the shutter to confirm that a shot has been taken and the camera is ready to take the next picture.



26 or 107 shots mode is available with erase capability (see next page for details). After each shot, the LCD Panel will show the number of remaining shots available.



A warning beep (longer and lower tone compared with normal beep) will emit if exposure is too dark for a normal picture taking. No image is taken when this condition occurs.



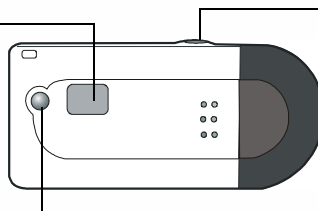
Other Modes of Operation

107 Shots Mode

This mode of operation allows you to take 107 shots of lower-resolution images in QVGA (320 x 240) format. To set your camera into 107 Shot mode:

- 1** Repeatedly press the Function Mode button until the "Lr" icon is displayed on the LCD Display Panel.
- 2** Press the Shutter button and the "Lr" icon becomes "99" which would indicate that the 107 Shot mode is ready.

107 Shots mode is ready only when the LCD Panel displays the "99" icon.



When the "Lr" icon appears on the LCD panel, press Shutter to display the "99" icon.

Repeatedly press this Function Mode button until the "Lr" icon is displayed.



In the 107 shots mode, the number on the LCD Panel will not decrease unless you have taken more than 8 pictures.



If you attempt to continue shooting at the end of 107th shot, a repetitive beep will emit when you press the Shutter button.

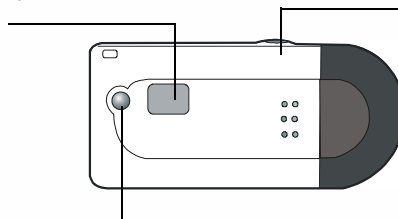


26 Shots Mode

This mode of operation allows you to take 26 shots of images at higher resolution CIF (640 x 480) format. The camera default to this mode. To set your camera back to 26 Shot mode after operating in 107 shots mode:

- 1** Repeatedly press the Function Mode button until the "Hr" icon is displayed on the LCD Display Panel.
- 2** Press the Shutter button and the "Hr" icon becomes "26" which would indicate that the 26 Shot mode is ready.

26 Shots mode is ready only when the LCD panel displays the "26" icon.



When the "Hr" icon appears on the LCD panel, press Shutter to display the "26" icon.

Repeatedly press this Function Mode button until the "Hr" icon is displayed.



WARNING! If you attempt to continue shooting at the end of 26th shot, a repetitive beep will emit when you press the Shutter button.



Continuous Shooting Mode

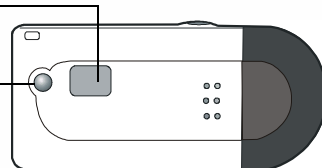
This mode of operation allows you to take multiple frames of images when holding down the Shutter button while aiming at your subject. A maximum of 26 or 107 shots can be taken depending on which shooting mode you are in. Continuous shooting under 26 Shots mode takes about 3.5 seconds to fully consume the 26 frames, while it takes about 14 seconds under 107 Shots mode.

If you release the Shutter midway, only part of the available frames will be loaded with images. To set camera into Continuous Shooting mode, repeatedly press the Function Mode select button until the " [E] " icon is displayed on the LCD panel.

Continuous Shooting mode is ON when

this LCD Panel displays the " [E] " icon.

Repeatedly press this Function Mode select button until the Continuous Shooting mode icon is displayed



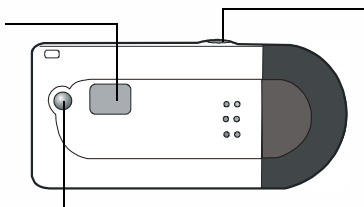
Self-Timer Mode

The Self-Timer mode of operation allows a 10 seconds shutter release delay after pressing the Shutter button. Mount the camera on the cradle when operating under Self-Timer mode.

1 Set camera into Self-Timer mode by repeatedly pressing the Function Mode select button until the "St" icon is displayed on the LCD Display Panel.

2 Then press the Shutter to start the 10 second countdown. The LED indicator will remain on until the picture is taken.

Self-Timer mode is ON when this LCD Panel displays the "St" icon.




Press the Shutter button to start the delay countdown.


Repeatedly press this Function Mode button until the Self-Timer mode icon St is displayed.

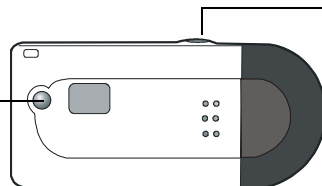


Force Power Off

The camera will turn off its power when it is not in use within 30 seconds. However, you can also turn off the power on your own.

- 1** Repeatedly press the Function Mode select button until the "  " icon is displayed on the LCD Display Panel.
- 2** Press the shutter button and the power of camera will be turned off.

Repeatedly press this Function Mode button until the power off icon  is displayed.




Press the Shutter button and camera power will be turned off.




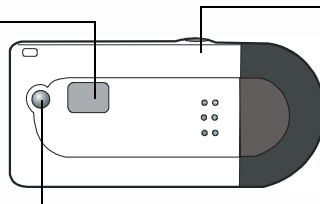
Managing Pictures in Camera

Erasing All Images from Camera

Whenever you wish to discard the images you have already taken, you can erase them from the camera. Take note that this erase feature functions only as "All-Frame-Erase." No partial erasure is allowed.

- 1** Enable the "All-Frame-Erase" feature by repeatedly pressing the Function Mode select button until the "  " icon is displayed on the LCD Display panel.
- 2** Press the Shutter button twice to start erasing all images in the camera. If you do not press the Shutter a second time within 5 seconds, the erase function is aborted.

"All-Frame-Erase" is ON
when this LCD Panel displays
the "  " icon.



Press the Shutter button
to start the delay count-
down

Repeatedly press this Function Mode button until the "  " icon is displayed.



Transferring the Pictures in Camera to Application Programs

In this section, we will show you how to transfer the pictures in the camera to the bundled software programs.

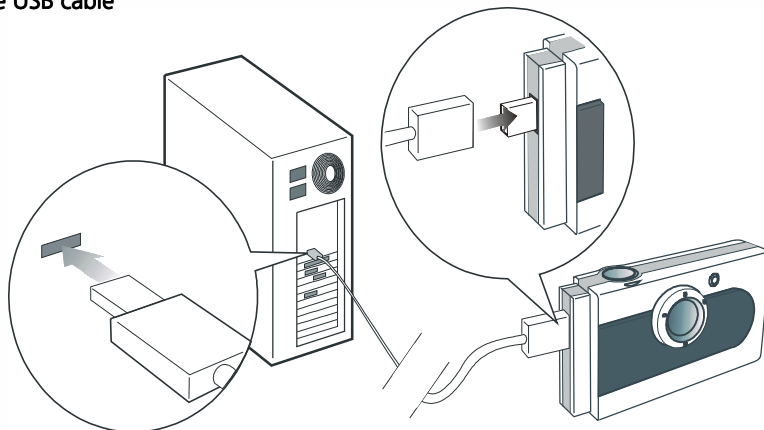


Note

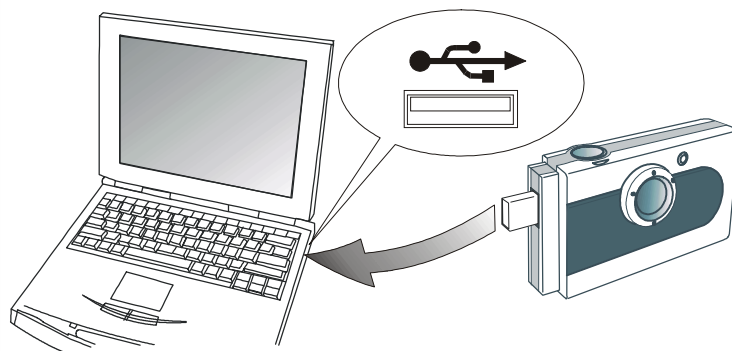
It is assumed that you have already installed the digital camera driver and bundled software into your computer. If not, install software as instructed in the section on “Installing Digital Camera Software” on page 8 of this manual.

Before you can use the pictures in camera, you need to connect the camera to your PC. Insert one end of the USB cable into the camera's USB port, and the other end to the USB port of your PC. Or, you can insert the digital camera directly into the USB port of your PC.

Connect using the USB cable

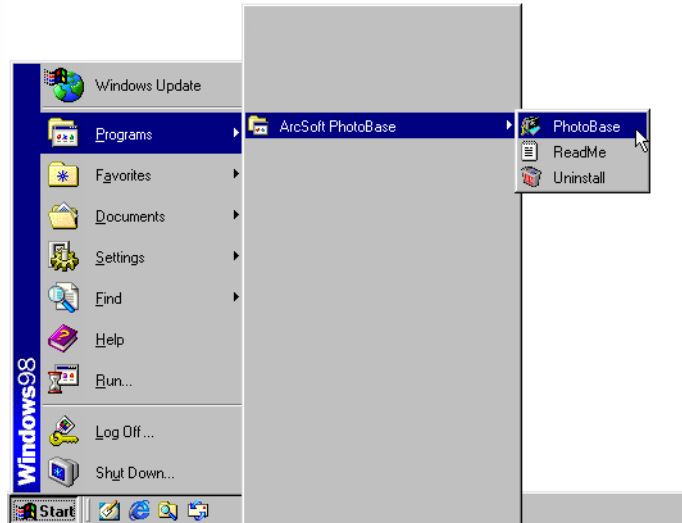


Connect directly to the USB port

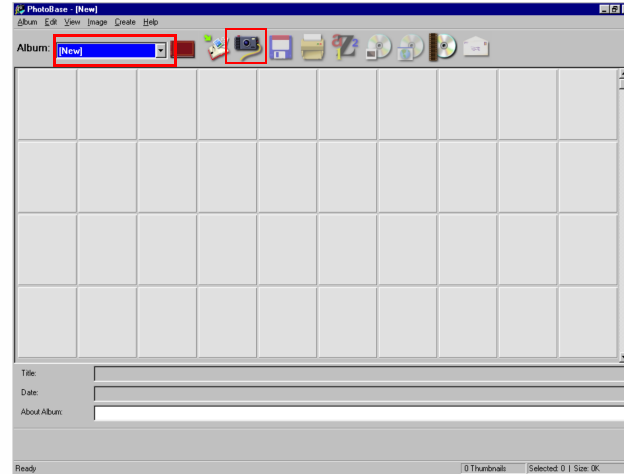


Transferring the Pictures in Camera to PhotoBase

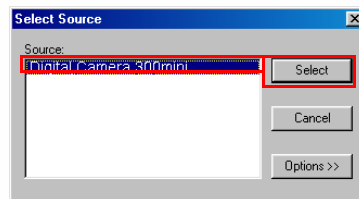
- 1 Open PhotoBase by selecting Programs, ArcSoft PhotoBase, then PhotoBase on Windows Start menu.



- 2 PhotoBase will be opened up. Select New from the Album drop-down listbox and click the Acquire icon .



- 3** A Select Source dialogue box will appear. Click Digital Camera 300mini, then the Select button.



- 4** The DC 300mini control panel will appear on the screen. The thumbnails of the pictures in the camera will appear in the boxes to the right.



Now you can perform the following operations:

- Transfer a selected picture from camera



Click to select a thumbnail image, then click Select. Or, simply double-click a thumbnail image and the selected image will be download from the camera to PhotoBase.

- Transfer all pictures from camera

Click Select all. All pictures in the camera will be transferred to PhotoBase.

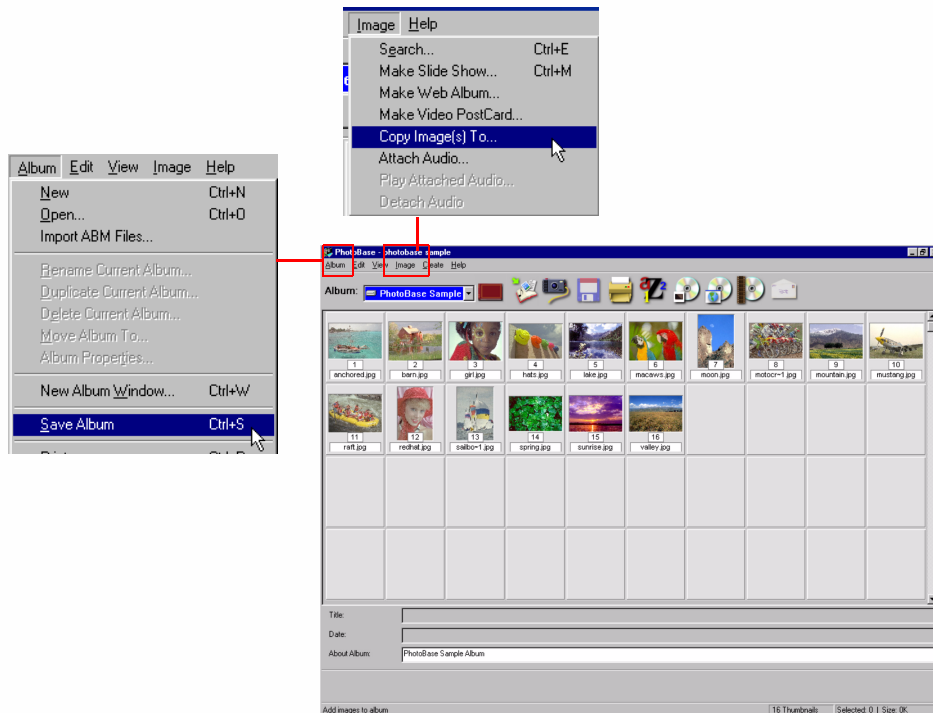
- Download images to DC 300mini control panel

When the camera is connected to PC, you can still press the shutter button to take pictures. You can download the newly taken pictures to DC 300mini by clicking Download. The thumbnail images of these newly taken pictures will appear.

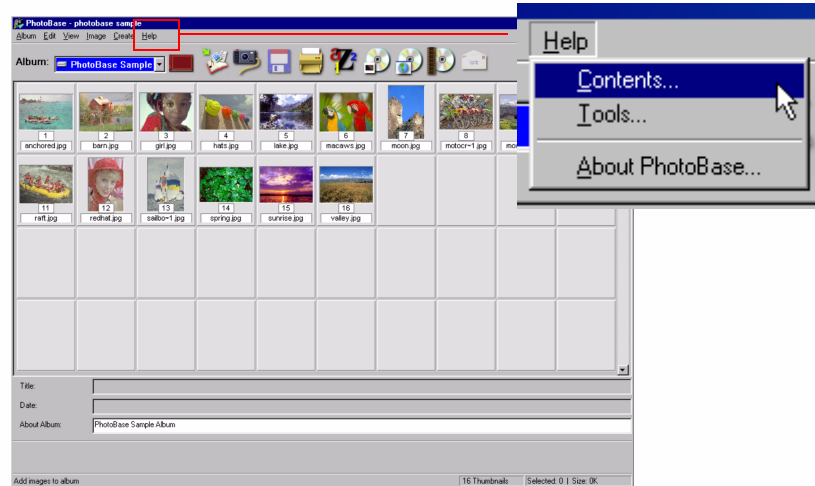
Click Exit to close DC 300mini control panel and return to PhotoBase.



- 5** The pictures in the camera will appear as thumbnails in PhotoBase. You can select Save Album from the File menu to save the album, or click to select a thumbnail in the album and select Copy Image(s) to... from the Image menu to save the picture elsewhere as image files.

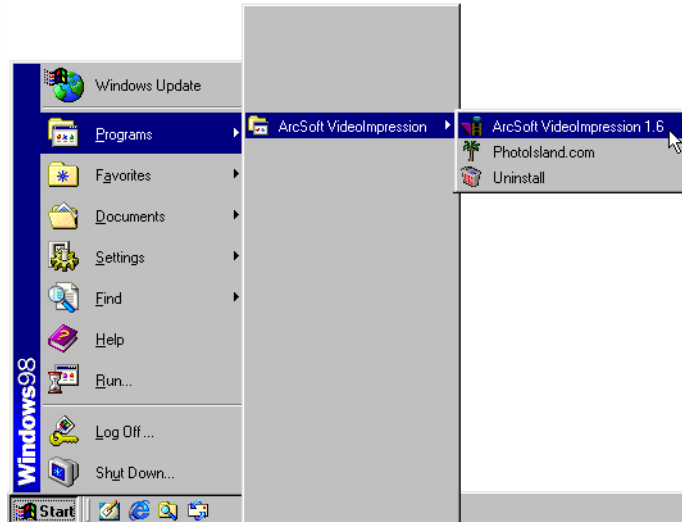


- 6** Now you can start working on the images in PhotoBase. For more information on how to use PhotoBase, click Help and select Contents.



Transferring the Pictures in Camera to VideoImpression

- 1 Open VideoImpression by selecting Programs, ArcSoft VideoImpression, then ArcSoft VideoImpression 1.6 on Windows Start menu.



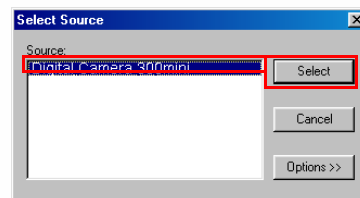
- 2** VideoImpression main screen will appear. Click New.



- 3** Click Acquire.



- 4 A Select Source dialogue box will appear. Click Digital Camera 300mini, then the Select button.



- 5 The DC 300mini control panel will appear on the screen. The thumbnails of the pictures in the camera will appear in the boxes to the right.



Now you can perform the following operations:

- Transfer a selected picture from camera

Click to select a thumbnail image, then click Select. Or, simply double-click a thumbnail image and the selected image will be download from the camera to VideoImpression.

- Transfer all pictures from camera

Click Select all. All pictures in the camera will be transferred to VideoImpression.

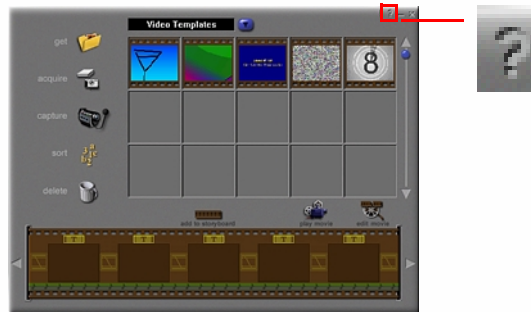
- Download images to DC 300mini control panel

When the camera is connected to PC, you can still press the shutter button to take pictures. You can download the newly taken pictures to DC 300mini by clicking Download. The thumbnail images of these newly taken pictures will appear.

Click Exit to close DC 300mini control panel and return to VideoImpression.



- 6** Now you can start working on a video in VideoImpression. For more information on how to use VideoImpression, click the icon .



Service Information

Technical support

If you encountered problems using Digital Camera 300mini and the camera driver program, please send an E-mail (containing detailed descriptions of the problem you came upon, the hardware and software environment of your system) to the following addresses:

USA: support-sc@benq.com

Europe: support@acercm.nl

Taiwan/Australia: service-tw@benq.com

China: service_china@benq.com

Asia and other countries: IMGservice@benq.com

For free driver program updates, product information and news release, please visit the following web address:

<http://www.benq.com.tw/global/>

For questions about the bundled application programs, please consult the following web addresses:

<http://www.arcsoft.com> (PhotoBase, VideoImpression)

